

Contents.

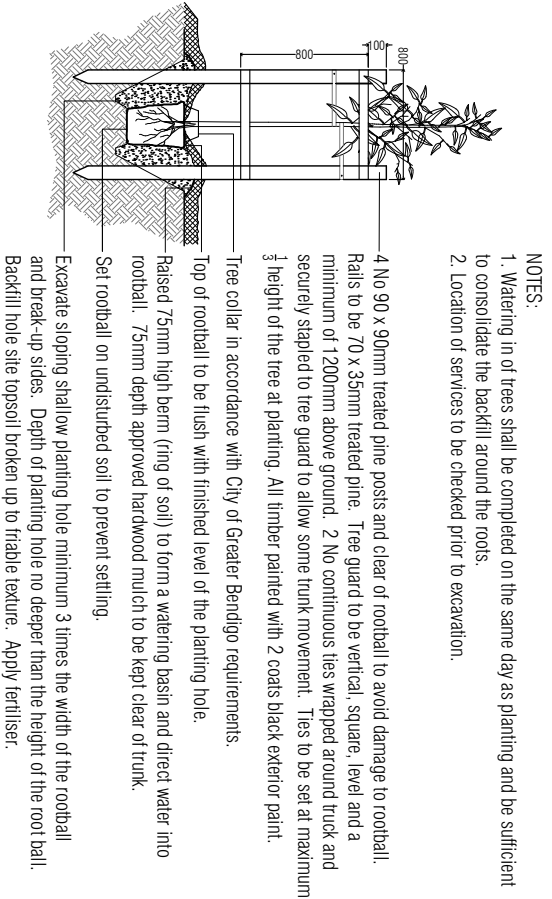
- Drawing**
PLA284-L01 Contents, Context Plan and Plant Schedule
PLA284-L02 Street Landscape Plan 1
PLA284-L03 Street Landscape Plan 2
PLA284-L04 Street Landscape Plan 3

Plant Schedule.

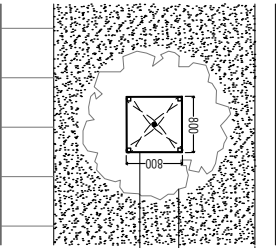
Code	Botanical Name	Common Name	Planting Size	Quantity
ACO	<i>Anaghorpha costata</i>	Smooth-barked Apple Myrtle	16 ltr container	29
ESC	<i>Corymbia exima</i> 'Nana' <i>Eucalyptus scoparia</i>	Wahlangera White Gum	16 ltr container	6
FPC	<i>Faxinus pennsylvanica</i> 'Cinnamom'	Cinnamon Ash	40-45 ltr container	5
QRO	<i>Quercus robur</i>	English Oak	40-45 ltr container	7
UPB	<i>Ulmus parvifolia</i> 'Burnley Select'	Burnley Select Chinese Elm	40-45 ltr container	5

* *Eucalyptus scoparia* change to *Corymbia exima* 'Nana' by City of Greater Bendigo on Town Planning PDF drawings. See file.

Typical Tree Planting Detail



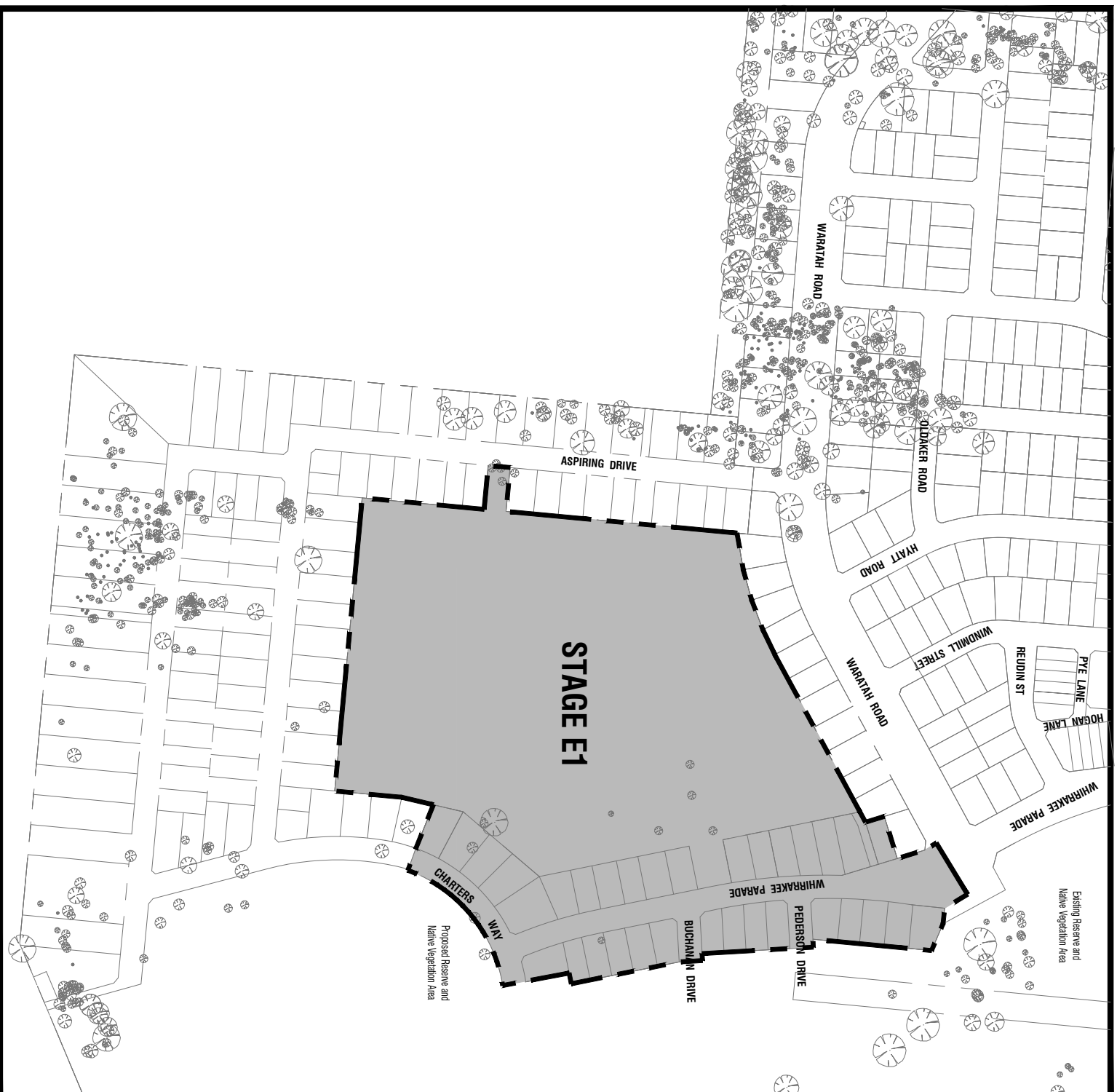
Tree Planting Detail (nts).



Tree Guard Setup (nts).

This plan is provided for marketing and information purposes only. It shows design levels only which may change during construction. Builders should check all information prior to the building process. Where discrepancies exist between the plan of subdivision and this plan, the plan of subdivision shall be taken as correct. It is the responsibility of the prospective purchaser to confirm prior to purchase, all lot levels, fill depth and all service locations are correct.

Stage E1, ViewPoint - Context Plan (nts).



A	Tree Location on Lot 460	RH	11.12.19
PP1	Town Planning Approval	AD	15.07.19
	Revision Description	Revised	Date

CLIENT ISSUE

Notes
 PLANNING PERMIT NUMBER DS/662/2018

- All dimensions to be checked on site before commencing work. All measurements are in metres, unless otherwise shown.
- The locations of underground services and light poles are indicative only - refer to electrical plans for electrical and service offsets.
- The location and depth of services shall be verified on site prior to the commencement of works. The Contractor shall be liable for any damage to services during the landscape works.
- Standard Street Tree Offset.
- It is assumed that all Underground Cable in close proximity to the 'tree zone' (5m diameter x 600mm depth) shall be within conduit or have cover slabs to provide a higher level of infrastructure protection. (Refer 12.0 Distribution Construction Standard Underground Trenching GA271 by Citypower and Powerco).
- Minimum setback of 20m to service assets including pits and conduit crossings.
- Minimum setback of 0.75m to domestic service tapping points and 2.0m to stormwater outlets.
- Minimum setback of 1.0m to footpath crossings and 3.0m to driveways where they are existing or known.
- Minimum setback of 3.0m to the hydrants.
- Minimum setback of 4.0m to light poles.
- Proposed Street Trees.
- Where possible, trees are planted to allow a driveway within 7.0m from the Title Boundary.
- Tree position in front of lots may change slightly due to actual location of services, and constructed driveway crossings.
- Setback from Intersection (kerb) shall be a minimum of 10m.
- Existing trees and vegetation. The Contractor shall confirm and protect any existing vegetation during landscape works in accordance with the Planning Permit, DWELP and Council requirements and any other agreements.
- Planting All trees shall be planted in accordance with typical details, unless otherwise specified.
- Mulch. Street Tree Mulch shall be recycled hardwood (or similar approved) unless otherwise specified.
- Grass Seeding. Reseed nature strips and other grassed areas where there has been disturbance due to landscape works with a proprietary heavy mix, unless otherwise specified.

PLA284-L01
LANDSCAPE ARCHITECTS
 WWW.PLOT1A.COM.AU
 ABN 64 930 120 469 | ACN 607 524 158

Intega
 Viewpoint - Stage E1
 Huntly, Bendigo

Drawn By	Checked By	Date	Scale
AD	RH	11.12.2019	1:1
Scale (A3)	Scale (A4)	Sheet	Sheet
NTS	NTS	1 OF 4	1 OF 4

PLA284-L01 A

Revision	Description	Date
A	Tree Location on Lot 460	RH 11.12.19
TP1	Town Planning Approval	AD 15.07.19

CLIENT ISSUE

Notes
 PLANNING PERMIT NUMBER DS/662/2018

- All dimensions to be checked on site before commencing work. All measurements are in metres, unless otherwise shown.
- The locations of underground services and light poles are indicative only - refer to electrical plans for electrical and service offsets.
- The location and depth of services shall be verified on site prior to the commencement of works. The Contractor shall be liable for any damage to services during the landscape works.
- Standard Street Tree Offsets
 It is assumed that all Underground Cable in close proximity to the 'tree zone' (5m diameter x 600mm depth) shall be within conduits or have cover slabs to provide a higher level of infrastructure protection. (*Refer 12.0 Distribution Construction Standard Underground Trenching GA271 by Citypower and Powerco).
 Minimum setback of 2.0m to service assets including pits and conduit crossings.
 Minimum setback of 0.75m to domestic service tipping points and 2.0m to stormwater outlets.
 Minimum setback of 1.0m to footpath crossings and 3.0m to driveways where they are existing or known.
 Minimum setback of 3.0m to light poles.
 Minimum setback of 4.0m to light poles.
- Proposed Street Trees
 Where possible, trees are planned to allow a driveway within 7.0m from the Title Boundary.
 Tree position in front of lots may change slightly due to actual location of services and constructed driveway crossings.
 Setback from intersection (kerb) shall be a minimum of 1.0m.
- Existing Trees and Vegetation. The Contractor shall confirm and protect any existing vegetation during landscape works in accordance with the Planning Permit, DWELP and Council requirements and any other agreements.
- Planting. All trees shall be planted in accordance with typical details, unless otherwise specified.
- Mulch. Street Tree Mulch shall be recycled hardwood (or similar approved) unless otherwise specified.
- Grass Seeding. Reseed nature strips and other grassed areas where there has been disturbance due to landscape works with a proprietary handy mix, unless otherwise specified.
- Plant Schedule. Refer to sheet PLA284-L01 for Plant Schedule.

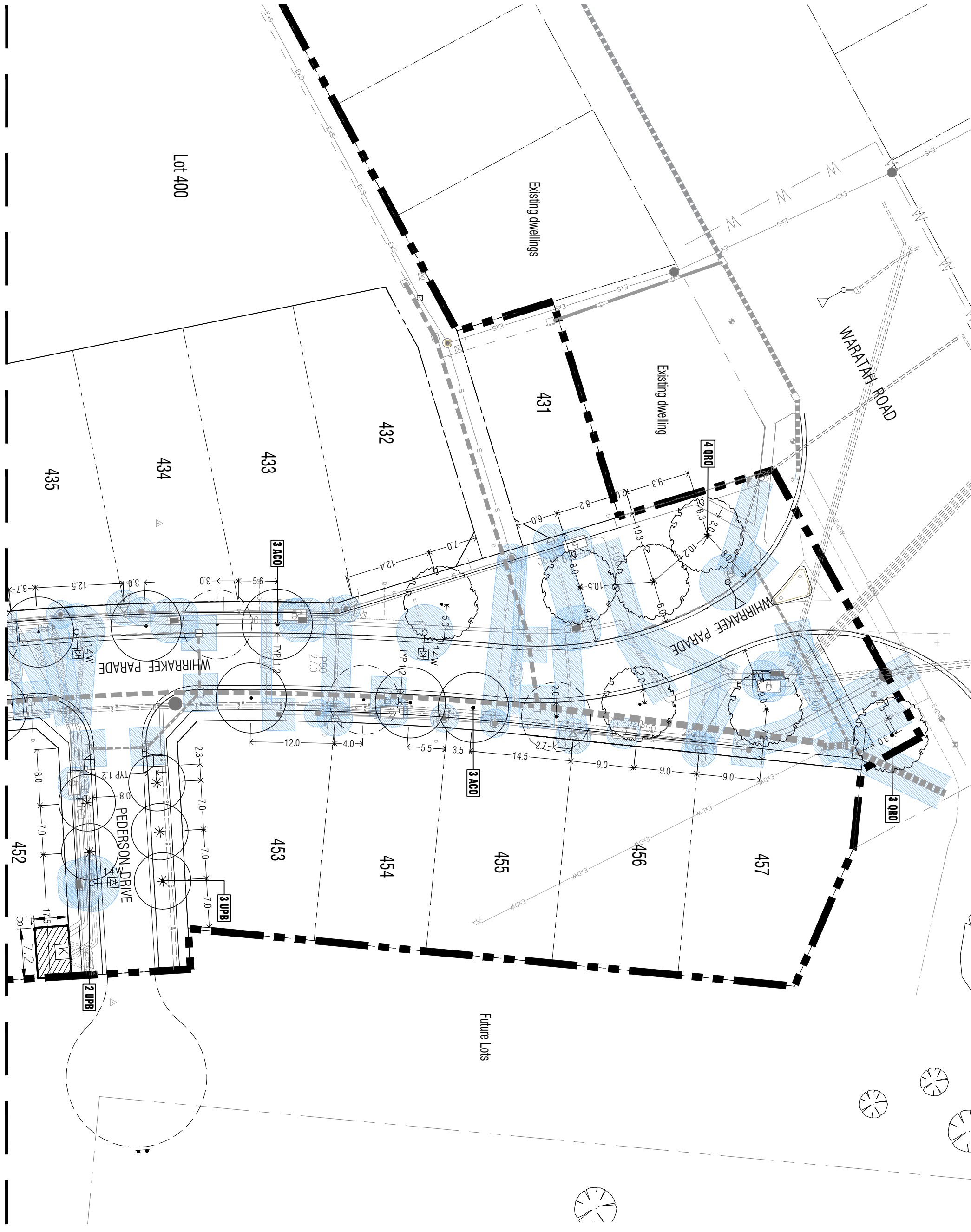
- Legend**
- Existing trees.
 - Proposed Street Trees (*Ulmus parvifolia* 'Barbery Select') [UPB]
 - Proposed Street Trees (*Quercus robur*) [ORO]
 - Proposed Street Trees (*Argyrodia coccinea*) [ACO]
 - Alternative tree location if driveway is located where street tree is proposed.
 - Service offsets / setbacks
 - Plant Label and Code



Client: **Intega**
 Viewpoint - Stage E1
 Humilly, Bendigo

Drawn By	AD	11.12.2019
Checked By	RH	11.12.2019
Scale (A1)	1:250	1 of 4
Scale (A3)	1:500	2 of 4

Project Number: **PLA284-L02**
 Revision: **A**



This plan is provided for marketing and information purposes only. It shows design levels only which may change during construction. Builders should check all information prior to the building process. Where discrepancies exist between the plan of subdivision and this plan, the plan of subdivision shall be taken as correct. It is the responsibility of the prospective purchaser to confirm prior to purchase, all lot levels, fill depth and all service locations are correct.

Continued on L03

Drawn	AD	11.12.19	RH	11.12.19
Approved	RH	15.07.19	AD	15.07.19
Revision				

CLIENT ISSUE

PLANNING PERMIT NUMBER DS/662/2018

Notes

- All dimensions to be checked on site before commencing work. All measurements are in metres, unless otherwise stated.
- The locations of underground services and light poles are indicative only - refer to electrical plans for electrical and service offsets.
- The location and depth of services shall be verified on site prior to the commencement of works. The Contractor shall be liable for any damage to services during the landscape works.
- Standard Street Tree Offsets
 - It is assumed that all Underground Cable in close proximity to the tree zone (3m diameter x 600mm depth) shall be within conduits or have cover slabs to provide a higher level of infrastructure protection. (Refer 12.0 Distribution Construction Standard Underground Trenching GA271 by Citypower and Powerco).
 - Minimum setback of 2.0m to service assets including pits and conduit crossings.
 - Minimum setback of 0.75m to domestic service tapping points and 2.0m to stormwater outlets.
 - Minimum setback of 1.0m to footpath crossings and 3.0m to driveways where they are existing or known.
 - Minimum setback of 3.0m to fire hydrants.
 - Minimum setback of 4.0m to light poles.
- Proposed Street Trees
 - Where possible, trees are planted to allow a driveway within 7.0m from the Title Boundary.
 - Tree position in front of lots may change slightly due to actual location of services, and constructed driveway crossings.
 - Setback from intersection (kerb) shall be a minimum of 1.0m.
 - Existing Trees and Vegetation. The Contractor shall confirm and protect any existing vegetation during landscape works in accordance with the Planning Permit, DWELP and Council requirements and any other agreements.
 - Planting. All trees shall be planted in accordance with typical details, unless otherwise specified.
 - Mulch. Street Tree Mulch shall be recycled hardwood (or similar approved) unless otherwise specified.
 - Grass Seeding. Reseed nature strips and other grassed areas where there has been disturbance due to landscape works with a proprietary hardy mix, unless otherwise specified.
 - Plant Schedule. Refer to sheet PLA284-L01 for Plant Schedule.

Legend

- Existing trees.
- Proposed Street Trees (*Anagallis arvensis*) (AC0)
- Proposed Street Trees (*Fraxinus pennsylvanica* Cinnamary) (PC0)
- Alternative tree location if driveway is located where street tree is proposed.
- Service offsets / setbacks
- Plant Label and Code



Client / Project

Viewpoint - Stage E1
Huntly, Bendigo

Drawn Title

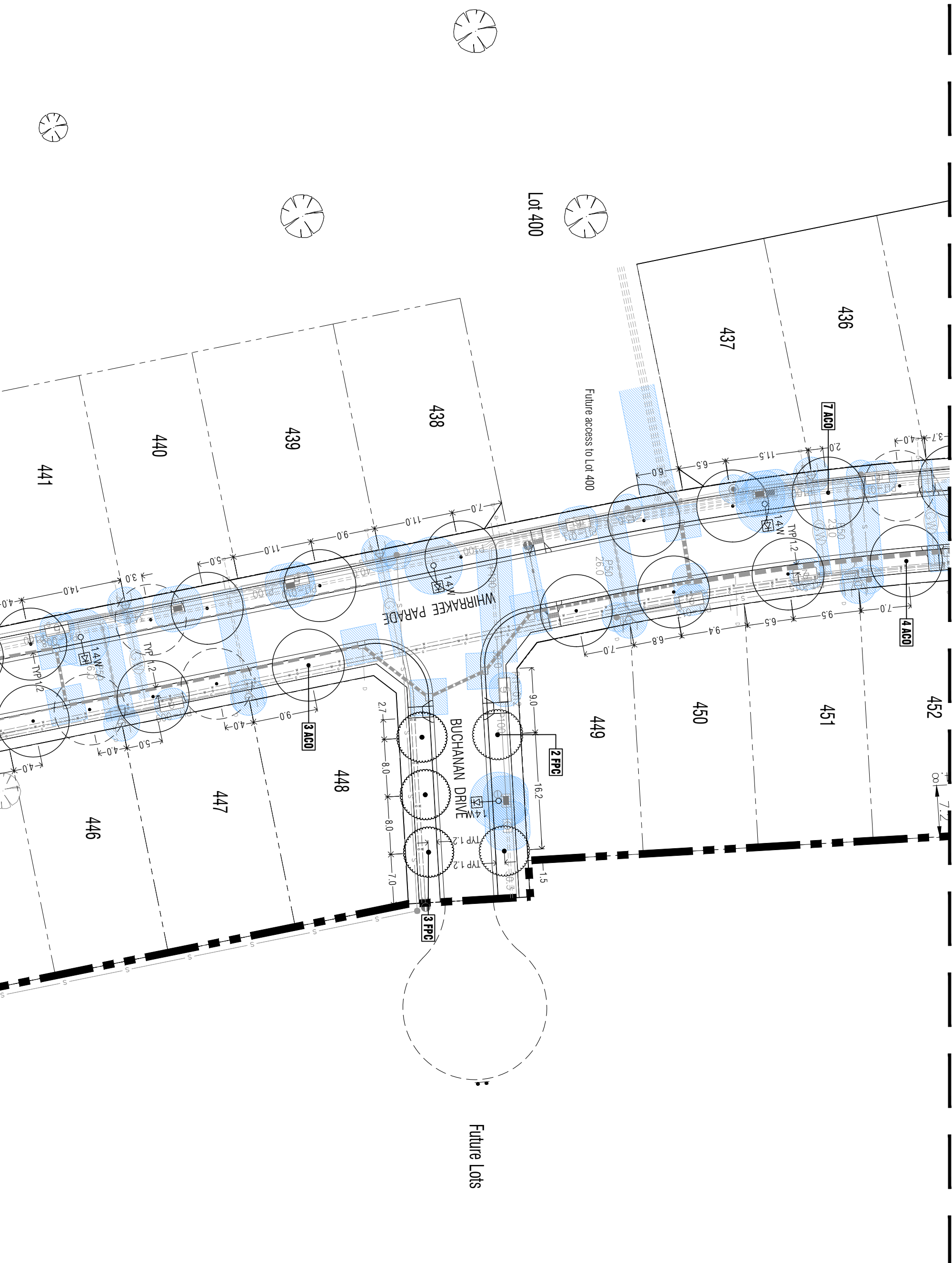
Street Landscape Plan 2

Drawn	AD	11.12.2019	None
Approved	RH	15.07.19	AD
Scale (Site)	1:250	1:500	3 of 4
Scale (Sheet)	1:250	1:500	3 of 4

This drawing and design is protected by copyright © PLOT Landscape Architects Pty Ltd. www.plot.com.au

PLA284-L03

Revision **A**



Lot 400

Continued on L04

This plan is provided for marketing and information purposes only, it shows design levels only which may change during construction. Builders should check all information prior to the building process. Where discrepancies exist between the plan of subdivision and this plan, the plan of subdivision shall be taken as correct. It is the responsibility of the prospective purchaser to confirm prior to purchase, all lot levels, fill depth and all service locations are correct.



Refer to separate landscape plans (future) for tree planting along this frontage.

Revision	Date	By
A	11.12.19	RH
AD	15.07.19	AD
Revision	Date	By
TP1		
TP1		

CLIENT ISSUE

Notes
 PLANNING PERMIT NUMBER DS/662/2018

- All dimensions to be checked on site before commencing work. All measurements are in metres, unless otherwise stated.
- The locations of underground services and light poles are indicative only - refer to electrical plans for electrical and service offsets.
- The location and depth of services shall be verified on site prior to the commencement of works. The Contractor shall be liable for any damage to services during the landscape works.
- Standard Street Tree Offsets
 - It is assumed that all Underground Cable in close proximity to the 'tree zone' (3m diameter x 600mm depth) shall be within conduits or have cover slabs to provide a higher level of infrastructure protection. (Refer 12.0 Distribution Construction Standard Underground Trenching GA271 by Citypower and Powercor).
 - Minimum setback of 2.0m to service assets including pits and conduit crossings.
 - Minimum setback of 0.75m to domestic service tapping points and 2.0m to stormwater outlets.
 - Minimum setback of 1.0m to footpath crossings and 3.0m to driveways where they are existing or known.
 - Minimum setback of 3.0m to fire hydrants.
 - Minimum setback of 4.0m to light poles.
- Proposed Street Trees
 - Where possible, trees are planted to allow a driveway within 7.0m from the Title Boundary.
 - Tree position in front of lots may change slightly due to actual location of services, and constructed driveway crossings.
 - Setback from intersection (kerb) shall be a minimum of 1.0m.
 - Existing Trees and Vegetation. The Contractor shall confirm and protect any existing vegetation during landscape works in accordance with the Planning Permit, DWELP and Council requirements and any other agreements.
 - Planting. All trees shall be planted in accordance with typical details, unless otherwise specified.
 - Mulch. Street tree Mulch shall be recycled hardwood (or similar approved) unless otherwise specified.
 - Grass Seeding. Reseed nature strips and other grassed areas where there has been disturbance due to landscape works with a proprietary hardy mix, unless otherwise specified.
 - Plant Schedule. Refer to sheet PLA284-L01 for Plant Schedule.

Legend

	Existing trees.
	Proposed Street Trees (<i>Anaghorhura costata</i>) (ACO)
	Proposed Street Trees (<i>Eucalyptus scoparia</i>) (ESC)
	Alternative tree location if driveway is located where street tree is proposed.
	Service offsets / setbacks
	Plant Label and Code



Client/Project
Viewpoint - Stage E1
 Hunlily, Bendigo

Drawn Title
Street Landscape Plan 3

Drawn	Approved	Date	Notes
AD	RH	11.12.2019	
Scale (A3)	Scale (A4)	Sheet	
1:250	1:500	4 of 4	

This drawing and design is protected by copyright © PLOT Landscape Architects Pty Ltd. www.plot.com.au

Revision
PLA284-L04

This plan is provided for marketing and information purposes only, it shows design levels only which may change during construction. Builders should check all information prior to the building process. Where discrepancies exist between the plan of subdivision and this plan, the plan of subdivision shall be taken as correct. It is the responsibility of the prospective purchaser to confirm prior to purchase, all lot levels, fill depth and all service locations are correct.