

TP2	Revisions re: C&G comments	AD	06.02.21
P1	Town Planning Approval	AD	03.12.20
P2	Revisions re: C&G comments	AD	03.12.20
P3	Revisions re: NBN Plans	AD	24.07.20
P4	Revisions re: NBN Plans	AD	17.07.20
P5	Revisions re: Power Plans	AD	26.05.20
P6	Revisions re: Stormwater	AD	19.05.20
P7	Revisions re: Stormwater	AD	19.05.20
P8	Revisions re: Stormwater	AD	19.05.20
P9	Revisions re: Stormwater	AD	19.05.20
P10	Revisions re: Stormwater	AD	19.05.20
P11	Revisions re: Stormwater	AD	19.05.20
P12	Revisions re: Stormwater	AD	19.05.20
P13	Revisions re: Stormwater	AD	19.05.20
P14	Revisions re: Stormwater	AD	19.05.20
P15	Revisions re: Stormwater	AD	19.05.20
P16	Revisions re: Stormwater	AD	19.05.20
P17	Revisions re: Stormwater	AD	19.05.20
P18	Revisions re: Stormwater	AD	19.05.20
P19	Revisions re: Stormwater	AD	19.05.20
P20	Revisions re: Stormwater	AD	19.05.20
P21	Revisions re: Stormwater	AD	19.05.20
P22	Revisions re: Stormwater	AD	19.05.20
P23	Revisions re: Stormwater	AD	19.05.20
P24	Revisions re: Stormwater	AD	19.05.20
P25	Revisions re: Stormwater	AD	19.05.20
P26	Revisions re: Stormwater	AD	19.05.20
P27	Revisions re: Stormwater	AD	19.05.20
P28	Revisions re: Stormwater	AD	19.05.20
P29	Revisions re: Stormwater	AD	19.05.20
P30	Revisions re: Stormwater	AD	19.05.20
P31	Revisions re: Stormwater	AD	19.05.20
P32	Revisions re: Stormwater	AD	19.05.20
P33	Revisions re: Stormwater	AD	19.05.20
P34	Revisions re: Stormwater	AD	19.05.20
P35	Revisions re: Stormwater	AD	19.05.20
P36	Revisions re: Stormwater	AD	19.05.20
P37	Revisions re: Stormwater	AD	19.05.20
P38	Revisions re: Stormwater	AD	19.05.20
P39	Revisions re: Stormwater	AD	19.05.20
P40	Revisions re: Stormwater	AD	19.05.20
P41	Revisions re: Stormwater	AD	19.05.20
P42	Revisions re: Stormwater	AD	19.05.20
P43	Revisions re: Stormwater	AD	19.05.20
P44	Revisions re: Stormwater	AD	19.05.20
P45	Revisions re: Stormwater	AD	19.05.20
P46	Revisions re: Stormwater	AD	19.05.20
P47	Revisions re: Stormwater	AD	19.05.20
P48	Revisions re: Stormwater	AD	19.05.20
P49	Revisions re: Stormwater	AD	19.05.20
P50	Revisions re: Stormwater	AD	19.05.20
P51	Revisions re: Stormwater	AD	19.05.20
P52	Revisions re: Stormwater	AD	19.05.20
P53	Revisions re: Stormwater	AD	19.05.20
P54	Revisions re: Stormwater	AD	19.05.20
P55	Revisions re: Stormwater	AD	19.05.20
P56	Revisions re: Stormwater	AD	19.05.20
P57	Revisions re: Stormwater	AD	19.05.20
P58	Revisions re: Stormwater	AD	19.05.20
P59	Revisions re: Stormwater	AD	19.05.20
P60	Revisions re: Stormwater	AD	19.05.20
P61	Revisions re: Stormwater	AD	19.05.20
P62	Revisions re: Stormwater	AD	19.05.20
P63	Revisions re: Stormwater	AD	19.05.20
P64	Revisions re: Stormwater	AD	19.05.20
P65	Revisions re: Stormwater	AD	19.05.20
P66	Revisions re: Stormwater	AD	19.05.20
P67	Revisions re: Stormwater	AD	19.05.20
P68	Revisions re: Stormwater	AD	19.05.20
P69	Revisions re: Stormwater	AD	19.05.20
P70	Revisions re: Stormwater	AD	19.05.20
P71	Revisions re: Stormwater	AD	19.05.20
P72	Revisions re: Stormwater	AD	19.05.20
P73	Revisions re: Stormwater	AD	19.05.20
P74	Revisions re: Stormwater	AD	19.05.20
P75	Revisions re: Stormwater	AD	19.05.20
P76	Revisions re: Stormwater	AD	19.05.20
P77	Revisions re: Stormwater	AD	19.05.20
P78	Revisions re: Stormwater	AD	19.05.20
P79	Revisions re: Stormwater	AD	19.05.20
P80	Revisions re: Stormwater	AD	19.05.20
P81	Revisions re: Stormwater	AD	19.05.20
P82	Revisions re: Stormwater	AD	19.05.20
P83	Revisions re: Stormwater	AD	19.05.20
P84	Revisions re: Stormwater	AD	19.05.20
P85	Revisions re: Stormwater	AD	19.05.20
P86	Revisions re: Stormwater	AD	19.05.20
P87	Revisions re: Stormwater	AD	19.05.20
P88	Revisions re: Stormwater	AD	19.05.20
P89	Revisions re: Stormwater	AD	19.05.20
P90	Revisions re: Stormwater	AD	19.05.20
P91	Revisions re: Stormwater	AD	19.05.20
P92	Revisions re: Stormwater	AD	19.05.20
P93	Revisions re: Stormwater	AD	19.05.20
P94	Revisions re: Stormwater	AD	19.05.20
P95	Revisions re: Stormwater	AD	19.05.20
P96	Revisions re: Stormwater	AD	19.05.20
P97	Revisions re: Stormwater	AD	19.05.20
P98	Revisions re: Stormwater	AD	19.05.20
P99	Revisions re: Stormwater	AD	19.05.20
P100	Revisions re: Stormwater	AD	19.05.20

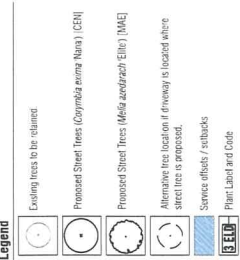
APPROVAL ISSUE

Notes

PLANNING PERMIT NUMBER DS/662/2018

- All dimensions to be checked on site before commencing work. All measurements are in metres, unless otherwise shown.
- The locations of underground services and light poles are shown. There are only 1 meter to electrical poles for electrical and service effects.
- The location and depth of services shall be verified on site prior to the commencement of works. The Contractor shall be liable for any damage to services during the landscape works.
- Site works shall be completed within the time frame specified in the contract. It is assumed that all underground cables in close proximity to the tree zone (15m diameter x 600mm depth) shall be within concrete or have cover slabs to avoid a higher level of infrastructure protection. ("Slab 12.0. Distribution Connection Standard (Design) / Meeting D&W 17 by Council")
- Minimum setback of 2.0m to service areas including pits and control crossings.
- Minimum setback of 0.75m to domestic service tapping points and 2.0m to stormwater outlets.
- Minimum setback of 1.0m to overhead power lines and 3.0m to overhead power lines when they are within a zone.
- Minimum setback of 3.0m to fire hydrants.
- Minimum setback of 4.0m to light poles.
- Proposed Street Trees.
- Where possible, trees are planted to allow a driveway within 10m of the front of lot. Tree position in front of lot may change slightly due to actual location of services, and constructed driveway crossings.
- Stakeout from intersection (near) shall be a minimum of 10m.
- Existing trees to be retained.
- Proposed Street Trees (Corymbia avoca Nana) (CEH)
- Proposed Street Trees (Melaleuca acedra) (EHE) (MAE)
- Alternative tree location if driveway is located where street tree is proposed.
- Service offsets / setbacks
- Plant Label and Code

Legend



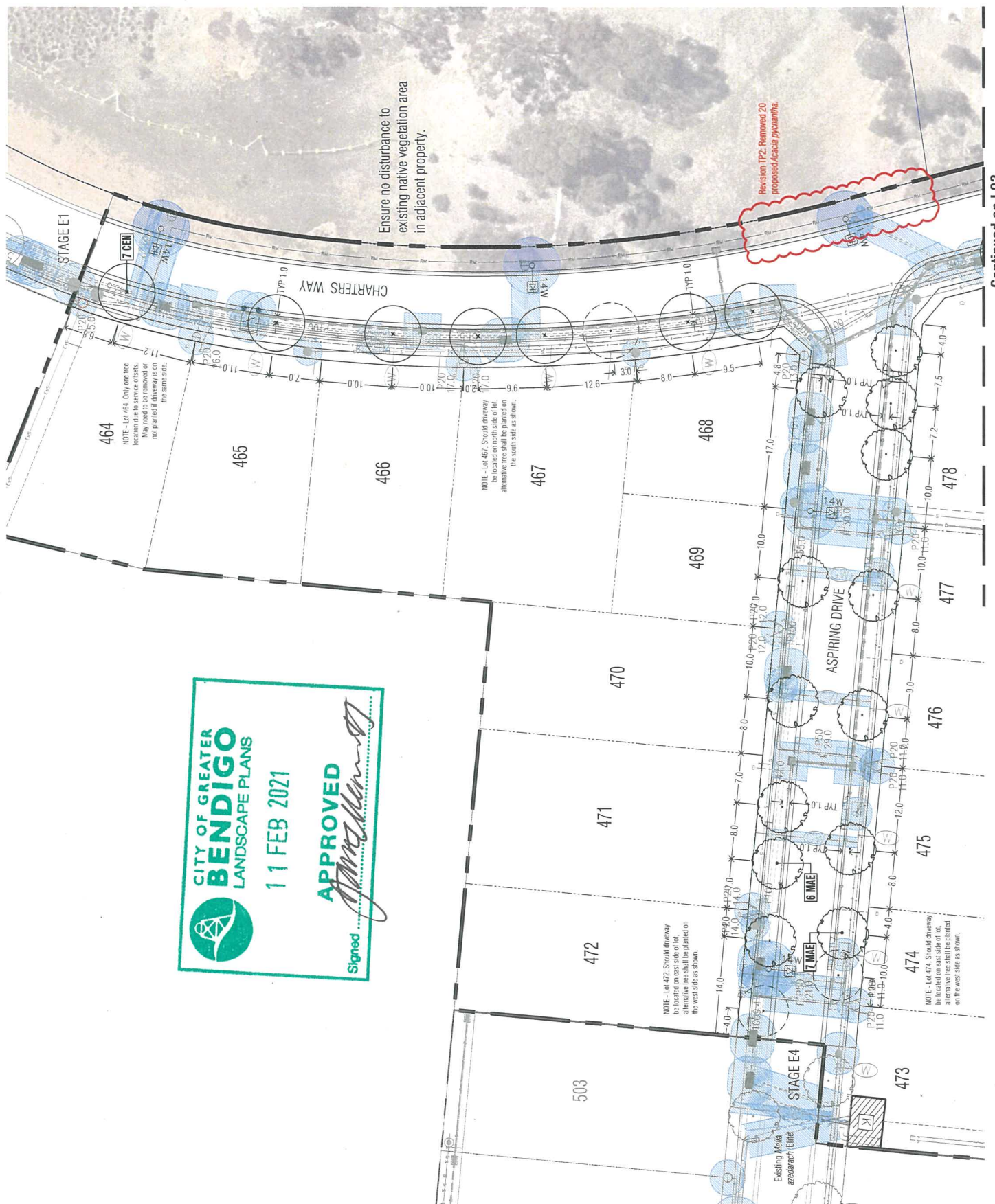
Intega
Viewpoint - Stage E3
Humly, Bendigo

Street Landscape Plan 1

Author: [Name]
Date: 06.02.2021

Scale: 1:250
Drawing No: 12.0.5

Project No: PLA337-L02
Revision: TP2



CITY OF GREATER BENDIGO LANDSCAPE PLANS

11 FEB 2021

APPROVED

Signed: [Signature]

Continued on L03

TP2	Revisions to C&G comments	AD	08.02.21
TP1	Town Planning Approval	AD	03.12.20
TP0	Revisions Approved Power and Drainage Reserves	AD	20.11.20
TP6	Revision to NBN (Biv A)	AD	24.07.20
TP5	Revisions to Right Plans	AD	20.07.20
TP4	Revisions to Utility Plans	AD	19.05.20
TP3	Revisions to Utility Power Plans	AD	19.05.20
TP2	Plans for service co-ordination	AD	19.03.20
TP1	Preliminary plans for Client Review	AD	11.02.20

APPROVAL ISSUE

PLANNING PERMIT NUMBER DS/662/2018

Notes

- All dimensions to be checked on site before commencing work. All measurements are in meters, unless otherwise shown.
- The locations of underground services and light poles are shown where they are to be located. Plans for electrical and storm water services.
- The location and depth of services shall be verified on site prior to the commencement of works. The Contractor shall be liable for any damage to services during the landscape works.
- Standard Street Tree Effects:
 - Location of Standard Street Tree (SST) in close proximity to the proposed Cable TV, in close proximity to the proposed Cable TV.
 - Minimum setback of 0.75m to domestic service tapping points and 2.0m to stormwater outlets.
 - Minimum setback of 1.0m to overhead crossings and 3.0m to driveways where they are existing or known.
 - Minimum setback of 3.0m to site hydrants.
 - Minimum setback of 4.0m to light poles.
- Proposed Street Trees:
 - Where possible, trees are planted to allow a driveway within 7.0m from the Title Boundary.
 - Tree position in front of lots may change slightly due to actual location of services, and constructed driveway crossings from intersection (feet) shall be a minimum of 10m.
 - Existing Trees and Vegetation: The Contractor shall confirm and protect any existing vegetation during landscape works in accordance with the Planning Permit (DELPW and Council requirements), the Development Plan and any other agreements.
 - Planting: All trees shall be planted in accordance with typical requirements, unless otherwise specified.
 - Grass Seeding: Reseal rubus strips and other grassed areas where there has been disturbance due to landscape works with a proprietary hardy mix, unless otherwise specified.
 - Plant Schedule: Refer to sheet L01 for Plant Schedule.

Legend

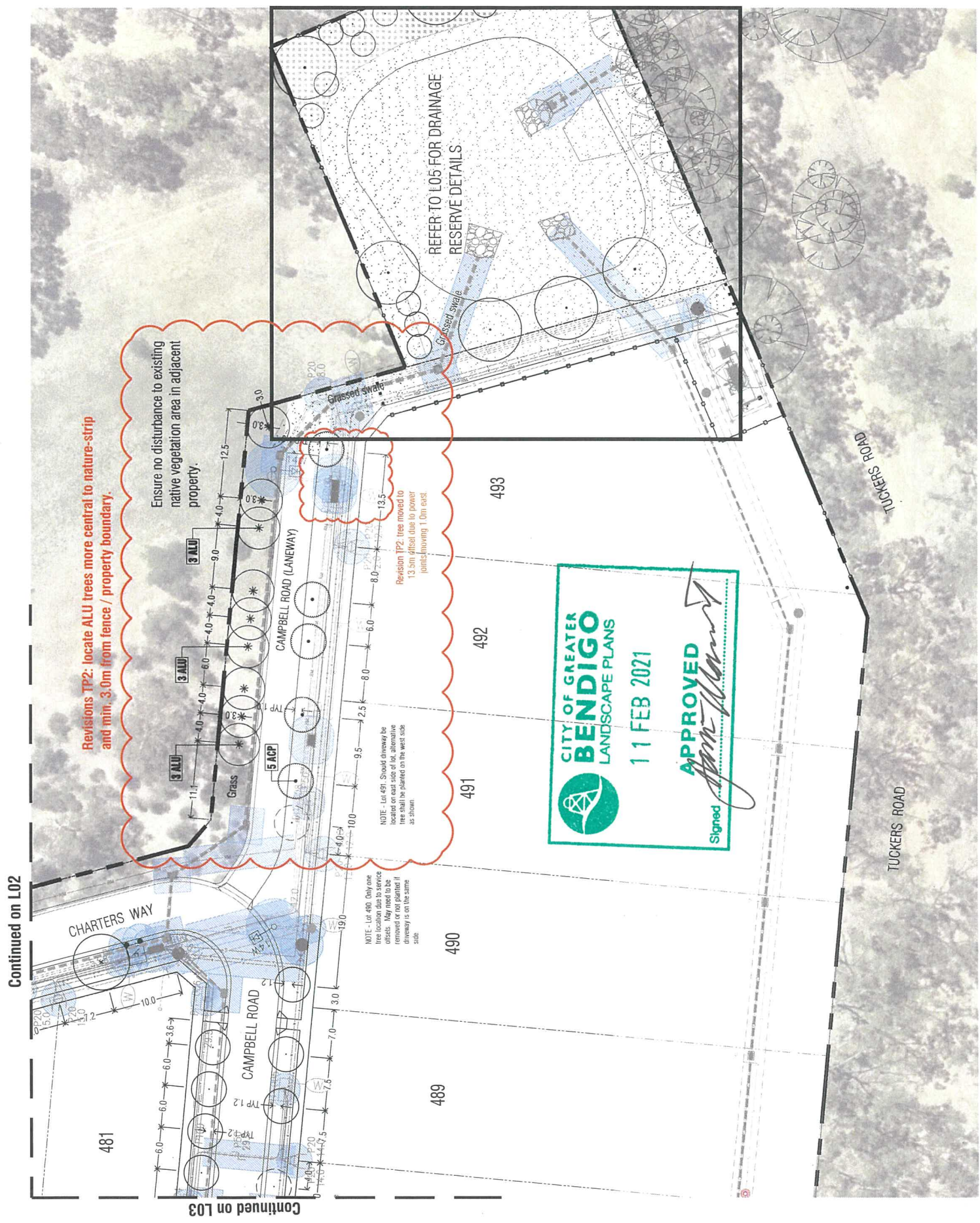
	Proposed Street Trees (Acacia pendula) (ACP)
	Proposed Indigenous Trees (Allocasuarina leucomera) (ALU)
	Alternative tree location if driveway is located where street tree is proposed
	Service offset / setbacks
	Plant Label and Code



Integra
Viewpoint - Stage E3
Huntly, Bendigo

Street Landscape Plan 3	
Client	AD
Approved	RH
Date	08.02.2021
Scale	1:250
Scale	1:1500
Scale	4.0:5

TP2
PLA337-L04



LANDSCAPE NOTES

1. EXISTING SITE CONDITIONS

Where the site has been disturbed, planting of trees and other large growing shrubs may require additional growing media or other amendment to ensure that the soil profile is able to support plant growth and that the plants establish well and thrive.

2. DETENTION BASIN

All drainage structures and detention basin earthworks will be completed as part of the civil works in accordance with the City of Greater Bendigo approved civil engineering plans. Landscape works shall not alter any earthworks, shape or slopes within the basin or swale.

3. PLANTS and PLANTING

All plants shall be healthy and disease free. Planting shall be in accordance with best horticultural practice. All plants shall be watered in on the same day as planting sufficient to consolidate the backfill around the roots. Planting shall not occur during December, January or February.

4. MULCH

Mulch shall be recycled hardwood (or similar approved by CoGB).

5. GUARDS and MARKER STAKES

Where specified, trees and shrubs shall be planted with a corflute tree guards and hardwood stakes/s. All guards and stakes shall be removed by the end of the Maintenance Period unless otherwise agreed by the City of Greater Bendigo.

6. GRASS

All grassed areas of detention basin and drainage swale shall be turfed as part of civil works. Turf shall be Aevalea fescue / rye mix or similar approved by CoGB.

Other grassed areas where there has been disturbance due to landscape works, grass seed with a hardy proprietary grass seed mix suitable to the local conditions and to achieve adequate cover prior to Handover.

Revisions TP2: extent of grassed areas and mulched areas amended depending on design slopes; removal of gravel; setback of trees from fence 3.0m and location of existing trees in Tuckers Road Reserve.

Revisions to CoGB Comments	AD	08.02.21
TP2: Revisions to CoGB Comments	AD	08.02.21
TP1: Town Planning Approval	AD	03.12.20
TP1: Revisions to CoGB Comments	AD	20.11.20
TP1: Revisions to CoGB Comments	AD	24.07.20
TP1: Revisions to CoGB Comments	AD	26.05.20
TP1: Revisions to CoGB Comments	AD	26.05.20
TP1: Revisions to CoGB Comments	AD	19.05.20
TP1: Revisions to CoGB Comments	AD	19.05.20
TP1: Revisions to CoGB Comments	AD	11.05.20
TP1: Revisions to CoGB Comments	AD	11.05.20

APPROVAL ISSUE

Notes

PLANNING PERMIT NUMBER DS/662/2018

1. All dimensions to be checked on site before commencing work. All measurements are in meters, unless otherwise shown.

2. The location and depth of services shall be verified on site prior to the commencement of works. The Contractor shall be liable for any damage to services during the landscape works.

3. Standard Street tree offsets:

- Standard Street tree offsets
- Minimum setback of 0.75m to domestic service tapping points and 2.0m to stormwater outlets
- Minimum setback of 3.0m to the right-of-way
- Minimum setback of 3.0m to the left-of-way
- 5 Existing Trees and Vegetation. The Contractor shall confirm and protect any existing vegetation during landscape works in accordance with the Planning Permit (DELP and Council requirements), the Development Plan and any other agreements

Legend

- Proposed indigenous trees and shrubs
- Proposed timber mulch
- Proposed turf grass by others
- Service offset / setbacks
- Plant Label and Code

CITY OF GREATER BENDIGO
LANDSCAPE PLANS

11 FEB 2021

APPROVED

Signed: *[Signature]*

PLOT 17
LANDSCAPE ARCHITECTS

Integra
Viewpoint - Stage E3
Hurryly, Bendigo

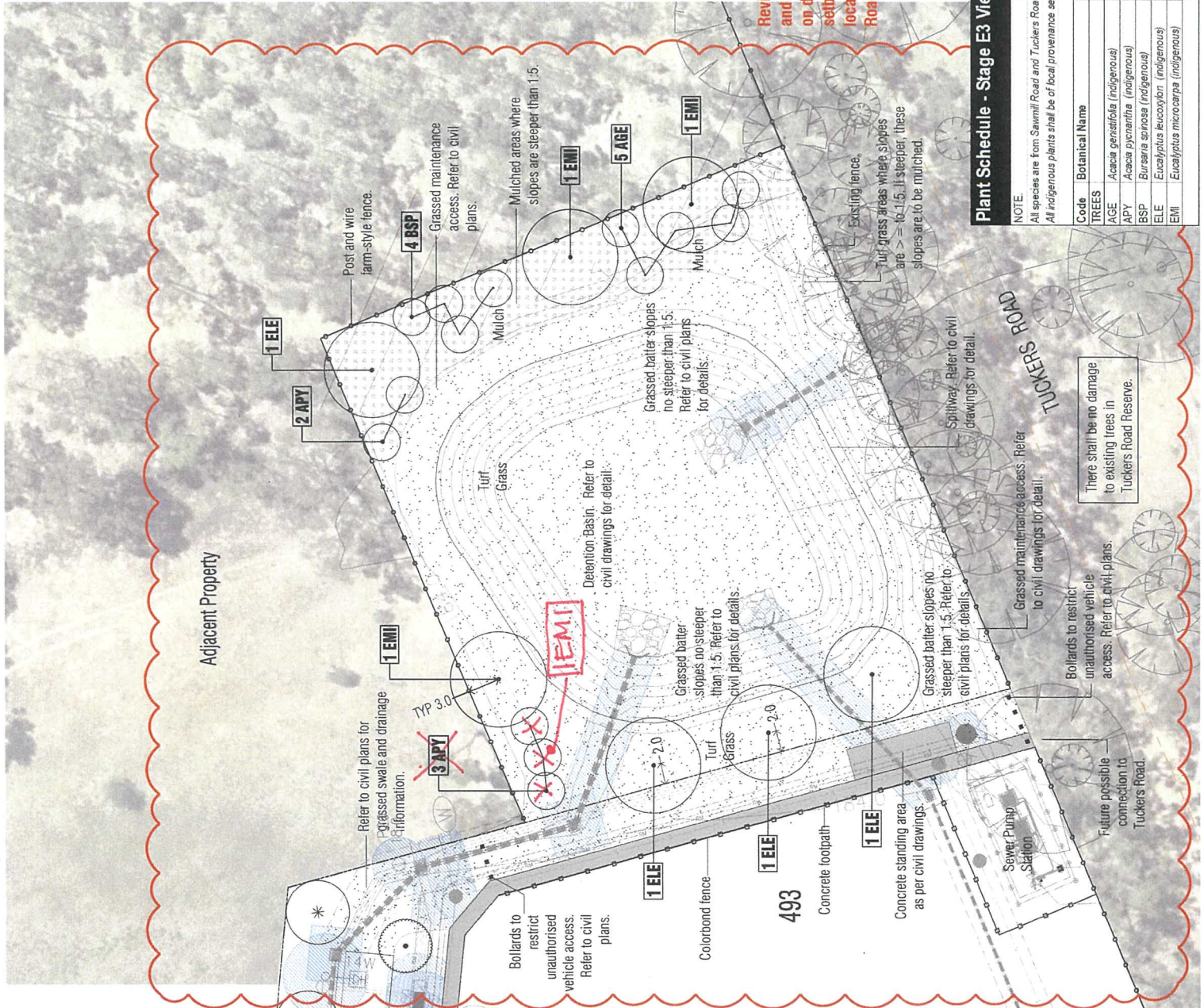
Drainage Reserve Landscape Plan

Client: AD
Approved: RH
Date: 08.02.2021

Scale: 1:250
Sheet: 1 of 5

This drawing and design is provided by copyright © PLOT 17 LANDSCAPE ARCHITECTS Pty Ltd. www.plot17.com.au

TP2
PLA337-L05



Plant Schedule - Stage E3 Viewpoint Drainage Reserve

NOTE: All species are from Sawmill Road and Tuckers Road Vegetation Reserves. Hurryly Offset Management Plan by Bissis Research, (October 2011)
All indigenous plants shall be of local provenance seed stock.

Code	Botanical Name	Common Name	Planting Size	Spacing	Quantity
TREES					
AGE	Acacia gemistifolia (indigenous)	Spreading Wattle	tubestock + guard	min. 3m spacing	5
APY	Acacia pycnantha (indigenous)	Golden Wattle	tubestock + guard	min. 3m spacing	2, 3
BSP	Bursaria spicosa (indigenous)	Sweet Bursaria	tubestock + guard	min. 3m spacing	4
ELE	Eucalyptus leucocylon (indigenous)	Yellow Gum	tubestock + guard	min. 10m spacing	4
EMI	Eucalyptus microcarpa (indigenous)	Grey Box	tubestock + guard	min. 10m spacing	4, 2
				Total	21

There shall be no damage to existing trees in Tuckers Road Reserve.

Continued on L04