

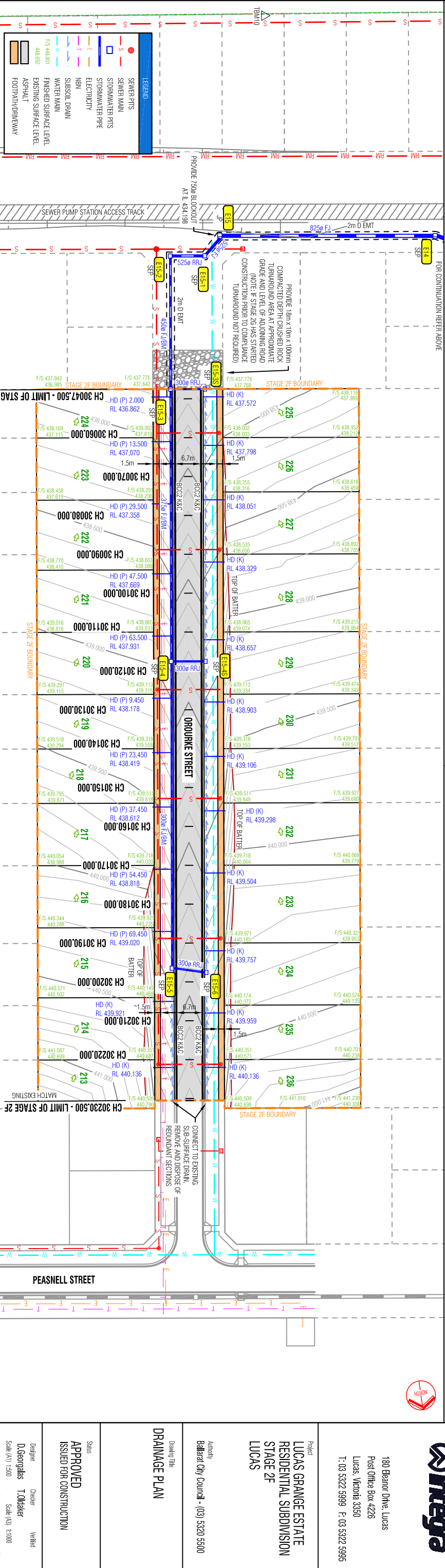
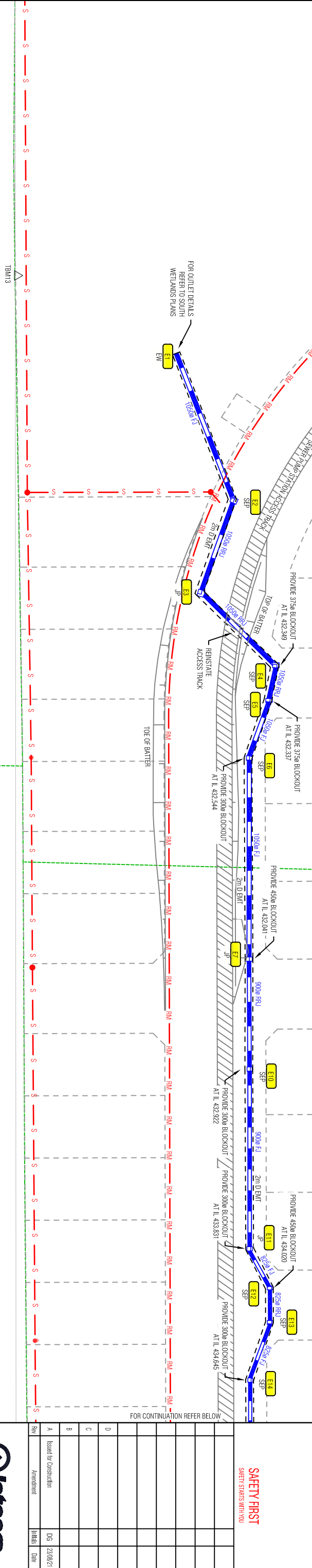
Pt No.	TYPE	PT DIMENSIONS			PT LEVELS		PT LOCATION			FACE BRG DEG MIN	COMMENTS
		L	W	D	INVERT	TOP	EASTING	NORTHING			
E1	EW	-	-	-	431.000	-	745235.049	5839893.280	281°10'	REFER TO W/ROADS SD 1931	
E2	SEP	1200	1500	2.331	431.235	433.866	745274.915	5839801.337	145°02'	PROVIDE STEP IRONS, REFER TO LU62F-CD-005	
E3	JP	1500	1500	2.348	431.336	433.884	745296.929	5839868.841	156°08'	PROVIDE STEP IRONS, REFER TO LU62F-CD-005	
E4	SEP	1500	1200	2.379	431.443	433.822	745318.954	5839804.570	80°08'	PROVIDE LADDER, REFER TO LU62F-CD-005	
E5	SEP	1500	900	2.334	431.480	433.814	745327.076	5839801.282	287°08'	PROVIDE STEP IRONS, REFER TO LU62F-CD-005	
E6	SEP	900	1500	2.334	431.589	433.883	745340.823	5839893.682	350°08'	PROVIDE STEP IRONS, REFER TO LU62F-CD-005	
E7	JP	900	1500	2.491	431.731	434.222	745391.753	5839894.820	350°08'	PROVIDE LADDER, REFER TO LU62F-CD-005	
E10	SEP	900	1200	2.485	431.972	434.457	745419.513	5839870.788	350°08'	PROVIDE LADDER, REFER TO LU62F-CD-005	
E11	JP	900	1200	2.889	432.917	435.606	745465.770	5839872.823	350°08'	PROVIDE LADDER, REFER TO LU62F-CD-005	
E12	SEP	1200	900	2.590	433.485	436.075	745476.011	5839875.210	80°08'	PROVIDE LADDER, REFER TO LU62F-CD-005	
E13	SEP	1280	900	2.522	433.573	436.095	745484.881	5839872.701	80°08'	PROVIDE LADDER, REFER TO LU62F-CD-005	

Pt No.	TYPE	PT DIMENSIONS			PT LEVELS		PT LOCATION			FACE BRG DEG MIN	COMMENTS
		L	W	D	INVERT	TOP	EASTING	NORTHING			
E14	SEP	900	1200	2.444	433.901	436.345	745498.428	5839865.082	350°08'	PROVIDE LADDER, REFER TO LU62F-CD-005	
E15	JP	900	1200	2.842	434.198	437.040	745551.000	5839856.431	350°08'	PROVIDE LADDER, REFER TO LU62F-CD-005	
E15-1	SEP	900	900	2.098	434.905	437.004	745591.757	5839860.832	80°08'	PROVIDE STEP IRONS, REFER TO SD-P1-1	
E15-2	SEP	900	900	1.587	435.415	437.002	745596.428	5839859.323	280°08'	PROVIDE STEP IRONS, REFER TO SD-P1-1	
E15-3	SEP	900	900	1.457	436.175	437.632	745572.298	5839833.066	280°08'	PROVIDE STEP IRONS, REFER TO SD-P1-1	
E15-3S	SEP	900	750	1.422	437.418	438.840	745584.309	5839862.079	280°08'	REFER TO SD-P1-1	
E15-4	SEP	900	750	1.195	437.645	438.840	745575.713	5839863.575	80°08'	PROVIDE STEP IRONS, REFER TO SD-P1-1	
E15-5	SEP	900	900	1.289	438.620	439.909	745597.836	5839793.810	280°08'	PROVIDE STEP IRONS, REFER TO SD-P1-1	
E15-6	SEP	900	750	1.195	438.728	439.923	745599.429	5839742.390	80°08'	REFER TO SD-P1-1	

NOTE: SETOUT POINTS ARE TO CENTRE OF BASE

Pt No.	TYPE	PT DIMENSIONS			PT LEVELS		PT LOCATION			FACE BRG DEG MIN	COMMENTS
		L	W	D	INVERT	TOP	EASTING	NORTHING			
E14	SEP	900	1200	2.444	433.901	436.345	745498.428	5839865.082	350°08'	PROVIDE LADDER, REFER TO LU62F-CD-005	
E15	JP	900	1200	2.842	434.198	437.040	745551.000	5839856.431	350°08'	PROVIDE LADDER, REFER TO LU62F-CD-005	
E15-1	SEP	900	900	2.098	434.905	437.004	745591.757	5839860.832	80°08'	PROVIDE STEP IRONS, REFER TO SD-P1-1	
E15-2	SEP	900	900	1.587	435.415	437.002	745596.428	5839859.323	280°08'	PROVIDE STEP IRONS, REFER TO SD-P1-1	
E15-3	SEP	900	900	1.457	436.175	437.632	745572.298	5839833.066	280°08'	PROVIDE STEP IRONS, REFER TO SD-P1-1	
E15-3S	SEP	900	750	1.422	437.418	438.840	745584.309	5839862.079	280°08'	REFER TO SD-P1-1	
E15-4	SEP	900	750	1.195	437.645	438.840	745575.713	5839863.575	80°08'	PROVIDE STEP IRONS, REFER TO SD-P1-1	
E15-5	SEP	900	900	1.289	438.620	439.909	745597.836	5839793.810	280°08'	PROVIDE STEP IRONS, REFER TO SD-P1-1	
E15-6	SEP	900	750	1.195	438.728	439.923	745599.429	5839742.390	80°08'	REFER TO SD-P1-1	

NOTE: SETOUT POINTS ARE TO CENTRE OF BASE



WARNING
BEWARE OF UNDERGROUND SERVICES
THE LOCATIONS OF UNDERGROUND SERVICES ARE APPROXIMATE ONLY AND THEIR EXACT POSITION SHOULD BE PROVEN ON SITE. NO GUARANTEE IS GIVEN THAT ALL EXISTING SERVICES ARE SHOWN

LEGEND	
●	SEWER PITS
○	SEWER MAN
□	STORMWATER PITS
○	STORMWATER PIPE
—	ELECTRICITY
—	NBN
—	SUBSOIL DRAIN
—	WATER MAIN
—	FINISHED SURFACE LEVEL
—	EXISTING SURFACE LEVEL
—	ASPHALT
—	FOOTPATH/DRIVEWAY

This plan is provided for marketing and information purposes only. It shows design levels only which may change during construction. Builders should check all information prior to the building process. Where discrepancies exist between the plan of subdivision and this plan, the plan of subdivision shall be taken as correct. It is the responsibility of the prospective purchaser to confirm prior to purchase, all lot levels, fill depth and all service locations are correct.

- General Index
1. ALL HD CONNECTIONS WITH CHAMFER TO
 2. RUNNING CHANGE OF HD TAKEN FROM NEXT DIMENSION PT. ALL OTHER HD CONNECTIONS ARE TO CENTER
 3. SUBSURFACE DRAINS TO OUTLET TO
 4. ROAD DIMENSIONS ARE SHOWN TO JP OF KERB AND CHANNEL
 5. IN SHOWN AT HOUSE DRAINS ARE INVERT OF FFE AT 300MM FROM TITLE BOUNDARY/FEASIBLEM. HOUSE DRAINS MUST NOT BE HIGHER THAN LEVEL SHOWN.

SAFETY FIRST
SAFETY STARTS WITH YOU

Rev	Description	Date
A	Issued for Construction	06/23/2021
B		
C		
D		



180 Bleanor Drive, Lucas
Post Office Box 4226
Lucas, Victoria 3350
T: 03 5322 5999 F: 03 5322 5995

Project:
LUCAS GRANGE ESTATE
RESIDENTIAL SUBDIVISION
STAGE 2F
LUCAS

Authority:
Ballarat City Council - (03) 5320 5500

Drawing Title:
DRAINAGE PLAN

Status:
APPROVED
ISSUED FOR CONSTRUCTION

Designer:
D. Georgakos
Scale (A1) 1:500
Scale (A2) 1:1000

Checker:
T. Dickler
Scale (A3) 1:1000

Sheet Number:
3 of 8

Drawing Number:
LUG2F-CD-003
Revision:
A