

Works CANOPY COVERAGE ASSESSMENT

Project **Stage F3, Viewpoint**
Date **Friday, 13 May 2022**
PLOT Drawing **PLA489-L01-L03_TP1**

Road **Whitelock Drive**

Code	Tree Species	Quantity	Radius (m)	Canopy Area (m2)	TOTAL CANOPY
ANS	<i>Acer negundo</i> 'Sensation'	21	3	28	594
Total					594
Road Reserve Area					2607
Canopy Coverage for				Whitelock Drive	23%

Road **Pederson Drive**

Code	Tree Species	Quantity	Radius (m)	Canopy Area (m2)	TOTAL CANOPY
UPB	<i>Ulmus parvifolia</i> 'Burnley Select'	6	4	50	302
Total					302
Road Reserve Area					763
Canopy Coverage for				Pederson Drive	40%

Stage Total 27%

CITY OF GREATER BENDIGO

Approved Landscape Plan

Planning Permit: DS/903/2020
Date: 20/05/2022
Approved By: Jane Marriott

Contents.

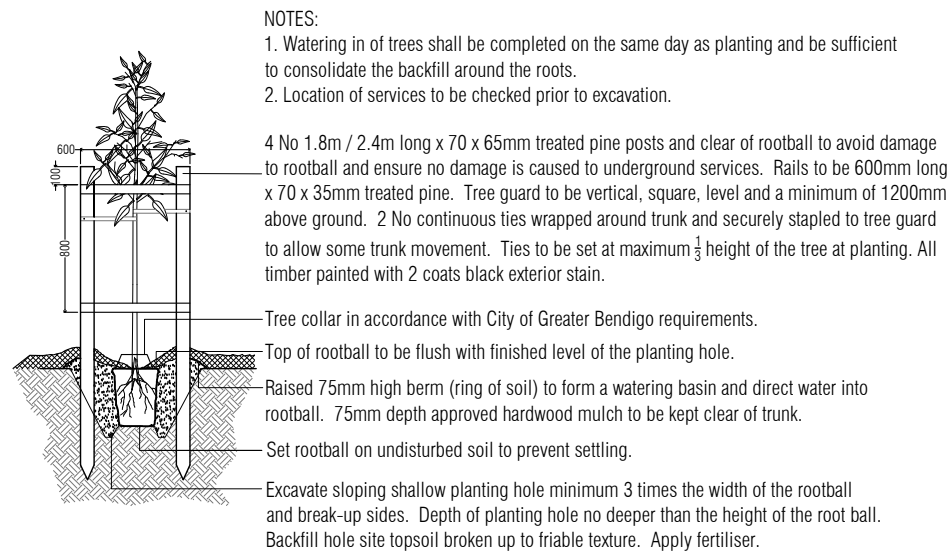
- Drawing
- PLA489-L01 Contents, Context Plan and Plant Schedule
- PLA489-L02 Street Landscape Plan 1
- PLA489-L03 Street Landscape Plan 2

Plant Schedule.

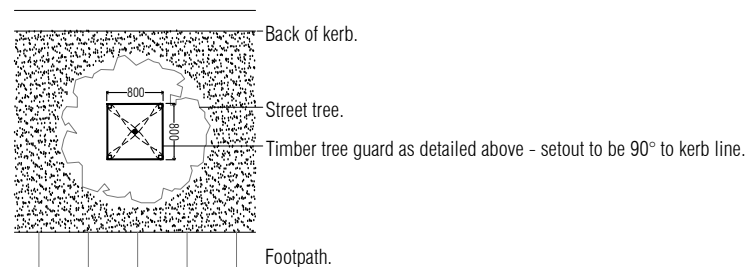
Street Trees

Code	Botanical Name	Common Name	Planting Size	Quantity
ANS	<i>Acer negundo</i> 'Sensation'	Box Elder	45 ltr container, min. 2.2m high	21
UPB	<i>Ulmus parvifolia</i> 'Burnley Select'	Burnley Select Chinese Elm	45 ltr container, min. 2.2m high	6

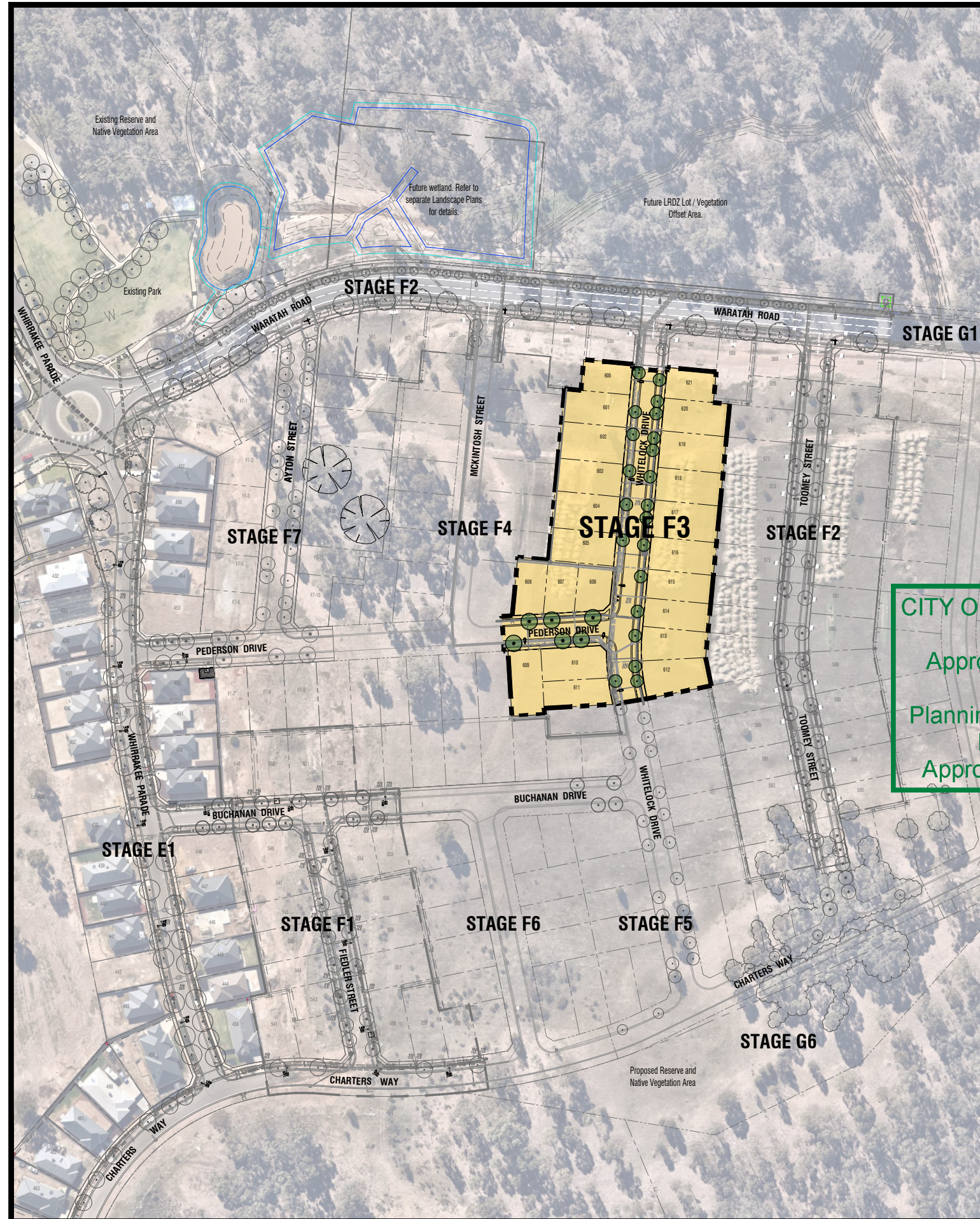
Typical Advanced Tree Planting Detail



Tree Planting Detail (nts).



Tree Guard Setout (nts).



Stage F3, Viewpoint - Context Plan (nts).

Revision	Description	Initials	Date
TP1	Town Planning Approval	AD	13.05.22
P2	Revisions re: Power, NBN and Civil plans	AD	21.02.22
P1	Preliminary Issue for Client Review	AD	03.02.22

APPROVAL ISSUE

Notes

PLANNING PERMIT NUMBER - DS/903/2020

- All dimensions to be checked on site before commencing work. All measurements are in metres, unless otherwise shown.
- The locations of underground services and light poles are indicative only - refer to electrical plans for electrical and service offsets.
- The location and depth of services shall be verified on site prior to the commencement of works. The Contractor shall be liable for any damage to services during the landscape works.
- Standard Street Tree Offsets.
 - It is assumed that all Underground Cable in close proximity to the 'tree zone' * (5m diameter x 600mm depth) shall be within conduits or have cover slabs to provide a higher level of infrastructure protection. (*Refer 12.0 'Distribution Construction Standard Underground Trenching GA211' by Citypower and Powercor).
 - Minimum setback of 2.0m to service assets including pits and conduit crossings.
 - Minimum setback of 0.75m to domestic service tapping points and 2.0m to stormwater outlets.
 - Minimum setback of 1.0m to footpath crossings and 3.0m to driveways where they are existing or known.
 - Minimum setback of 3.0m to fire hydrants.
 - Minimum setback of 4.0m to light poles.
- Proposed Street Trees.
 - Where possible, trees are planted to allow a driveway within 7.0m from the Title Boundary.
 - Tree position in front of lots may change slightly due to 'actual' location of services, and constructed driveway crossings.
 - Setback from intersection (kerb) shall be a minimum of 10m.
- Existing Trees and Vegetation. The Contractor shall confirm and protect any existing vegetation during landscape works in accordance with the Planning Permit, DWELP and Council requirements and any other agreements.
- Planting. All trees shall be planted in accordance with typical details, unless otherwise specified.
- Mulch. Street Tree Mulch shall be recycled hardwood (or similar approved) unless otherwise specified.
- Crane Condition. Report on trees and other ground areas where there has been disturbance due to landscape works with a minimum of 10m radius unless otherwise specified.

CITY OF GREATER BENDIGO
Approved Landscape Plan
Planning Permit: DS/903/2020
Date: 20/05/2022
Approved By: Jane Marriott



Client / Project
Intega
Viewpoint - Stage F3
Huntly, Bendigo

Drawing Title			
Contents, Context Plan and Plant Schedule			
Drawn	Approved	Date	North
AD	RH	13.05.2022	
Scale (A1)	Scale (A3)	Sheet	
NTS	NTS	1 of 3	

This drawing and design is protected by copyright © PLOT Landscape Architects Pty Ltd. www.plota.com.au

PLA489-L01 **TP1**

TP1	Town Planning Approval	AD	13.05.22
P2	Revisions re: Power, NBN and Civil plans	AD	21.02.22
P1	Preliminary Issue for Client Review	AD	03.02.22
Revision	Description	Initials	Date

APPROVAL ISSUE

Notes

- PLANNING PERMIT NUMBER - DS/903/2020**
- All dimensions to be checked on site before commencing work. All measurements are in metres, unless otherwise shown.
 - The locations of underground services and light poles are indicative only - refer to electrical plans for electrical and service offsets.
 - The location and depth of services shall be verified on site prior to the commencement of works. The Contractor shall be liable for any damage to services during the landscape works.
 - Standard Street Tree Offsets.
 - It is assumed that all Underground Cable in close proximity to the 'tree zone' * (5m diameter x 600mm depth) shall be within conduits or have cover slabs to provide a higher level of infrastructure protection. (*Refer 12.0 'Distribution Construction Standard Underground Trenching GA211' by Citypower and Powercor).
 - Minimum setback of 2.0m to service assets including pits and conduit crossings.
 - Minimum setback of 0.75m to domestic service tapping points and 2.0m to stormwater outlets.
 - Minimum setback of 1.0m to footpath crossings and 3.0m to driveways where they are existing or known.
 - Minimum setback of 3.0m to fire hydrants.
 - Minimum setback of 4.0m to light poles.
 - Proposed Street Trees.
 - Where possible, trees are planted to allow a driveway within 7.0m from the Title Boundary.
 - Tree position in front of lots may change slightly due to 'actual' location of services, and constructed driveway crossings.
 - Setback from intersection (kerb) shall be a minimum of 10m.
 - Existing Trees and Vegetation. The Contractor shall confirm and protect any existing vegetation during landscape works in accordance with the Planning Permit, DWELP and Council requirements and any other agreements.
 - Planting. All trees shall be planted in accordance with typical details, unless otherwise specified.
 - Mulch. Street Tree Mulch shall be recycled hardwood (or similar approved) unless otherwise specified.
 - Grass Seeding. Reseed nature strips and other grassed areas where there has been disturbance due to landscape works with a proprietary hardy mix, unless otherwise specified.
 - Plant Schedule. Refer to sheet L01 for Plant Schedule.

Legend

- Existing trees to be retained.
- Proposed Street Trees (*Acer negundo* 'Sensation') (ANS)
- Alternative tree location if driveway is located where street tree is proposed.
- Service offsets / setbacks
- Plant Label and Code

CITY OF GREATER BENDIGO
Approved Landscape Plan
 Planning Permit: DS/903/2020
 Date: 20/05/2022
 Approved By: Jane Marriott



Continued on L03

Client / Project
 Intega
 Viewpoint - Stage F3
 Huntly, Bendigo

Drawing Title
Street Landscape Plan 1

Drawn	Approved	Date	North
AD	RH	13.05.2022	
Scale (A1)	Scale (A3)	Sheet	
1:250	1:500	2 of 3	

Drawing Number
PLA489-L02

Revision
TP1

This drawing and design is protected by copyright © PLOT Landscape Architects Pty Ltd. www.plota.com.au

Continued on L02

TP1	Town Planning Approval	AD	13.05.22
P2	Revisions re: Power, NBN and Civil plans	AD	21.02.22
P1	Preliminary Issue for Client Review	AD	03.02.22
Revision	Description	Initials	Date

APPROVAL ISSUE

Notes

- PLANNING PERMIT NUMBER - DS/903/2020
- All dimensions to be checked on site before commencing work. All measurements are in metres, unless otherwise shown.
 - The locations of underground services and light poles are indicative only - refer to electrical plans for electrical and service offsets.
 - The location and depth of services shall be verified on site prior to the commencement of works. The Contractor shall be liable for any damage to services during the landscape works.
 - Standard Street Tree Offsets.
 - It is assumed that all Underground Cable in close proximity to the 'tree zone' * (5m diameter x 600mm depth) shall be within conduits or have cover slabs to provide a higher level of infrastructure protection. (*Refer 12.0 'Distribution Construction Standard Underground Trenching GA211' by Citypower and Powercor).
 - Minimum setback of 2.0m to service assets including pits and conduit crossings.
 - Minimum setback of 0.75m to domestic service tapping points and 2.0m to stormwater outlets.
 - Minimum setback of 1.0m to footpath crossings and 3.0m to driveways where they are existing or known.
 - Minimum setback of 3.0m to fire hydrants.
 - Minimum setback of 4.0m to light poles.
 - Proposed Street Trees.
 - Where possible, trees are planted to allow a driveway within 7.0m from the Title Boundary.
 - Tree position in front of lots may change slightly due to 'actual' location of services, and constructed driveway crossings.
 - Setback from intersection (kerb) shall be a minimum of 10m.
 - Existing Trees and Vegetation. The Contractor shall confirm and protect any existing vegetation during landscape works in accordance with the Planning Permit, DWELP and Council requirements and any other agreements.
 - Planting. All trees shall be planted in accordance with typical details, unless otherwise specified.
 - Mulch. Street Tree Mulch shall be recycled hardwood (or similar approved) unless otherwise specified.
 - Grass Seeding. Reseed nature strips and other grassed areas where there has been disturbance due to landscape works with a proprietary hardy mix, unless otherwise specified.
 - Plant Schedule. Refer to sheet L01 for Plant Schedule.

CITY OF GREATER BENDIGO
 Approved Landscape Plan
 Planning Permit: DS/903/2020
 Date: 20/05/2022
 Approved By: Jane Marriott

Legend

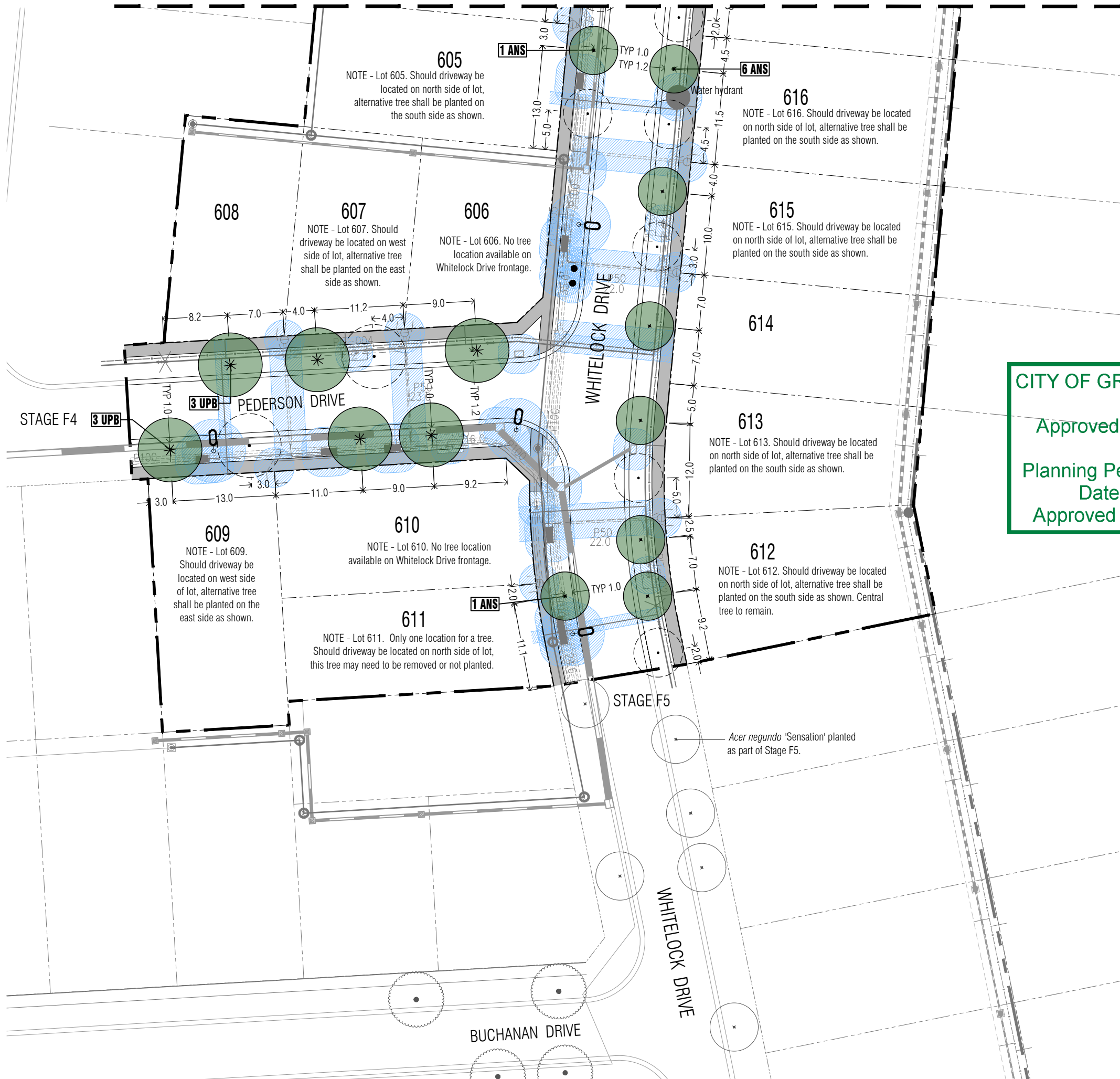
- Existing trees to be retained.
- Proposed Street Trees (*Acer negundo* 'Sensation') [ANS]
- Proposed Street Trees (*Ulmus parvifolia* 'Burnley Select') [UPB]
- Alternative tree location if driveway is located where street tree is proposed.
- Service offsets / setbacks
- Plant Label and Code



Client / Project
Intega
 Viewpoint - Stage F3
 Huntly, Bendigo

Street Landscape Plan 2			
Drawn	Approved	Date	North
AD	RH	13.05.2022	
Scale (A1)	Scale (A3)	Sheet	
1:250	1:500	3 of 3	
This drawing and design is protected by copyright © PLOT Landscape Architects Pty Ltd. www.plotla.com.au			

Drawing Number: **PLA489-L03** Revision: **TP1**



Acer negundo 'Sensation' planted as part of Stage F5.