

Contents.

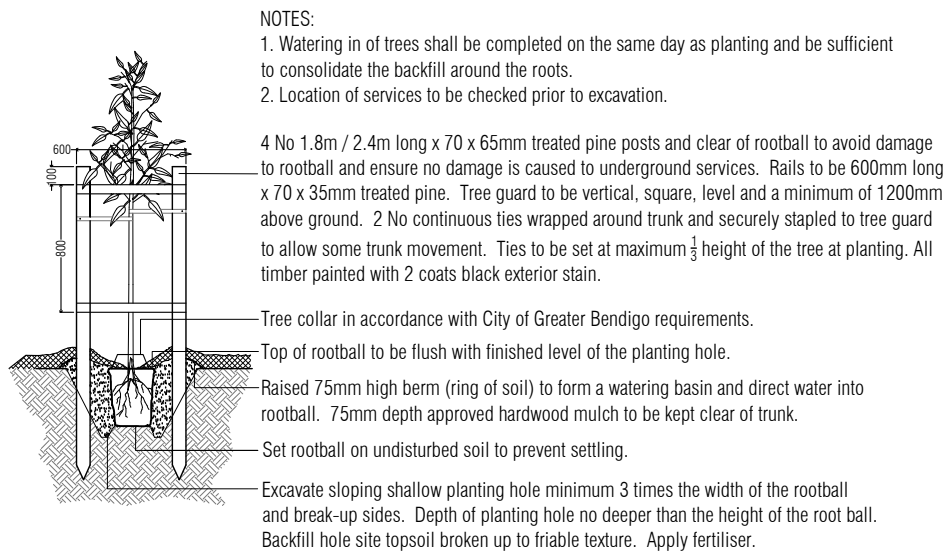
- Drawing
- PLA496-L01 Contents, Context Plan and Plant Schedule
- PLA496-L02 Street Landscape Plan 1
- PLA496-L03 Street Landscape Plan 2

Plant Schedule.

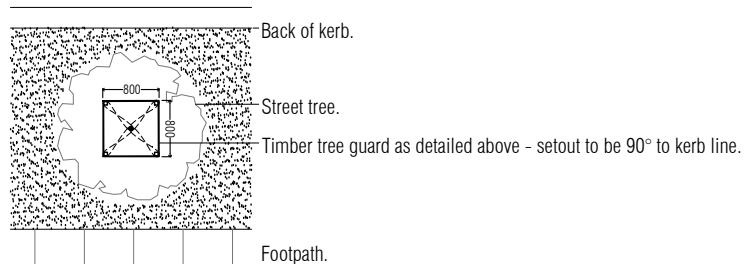
Street Trees

Code	Botanical Name	Common Name	Planting Size	Quantity
ANS	<i>Acer negundo</i> 'Sensation'	Box Elder	45 ltr container, min. 2.2m high	19
EMM	<i>Eucalyptus mannifera</i> subsp. <i>maculosa</i>	Red Spotted Gum	45 ltr container, min. 2.2m high	5
FPC	<i>Fraxinus pennsylvanica</i> 'Cimmzam'	Cimmaron Ash	45 ltr container, min. 2.2m high	4
GTS	<i>Gleditsia triacanthos</i> 'Sunburst'	Honey Locust cultivar	45 ltr container, min. 2.2m high	6

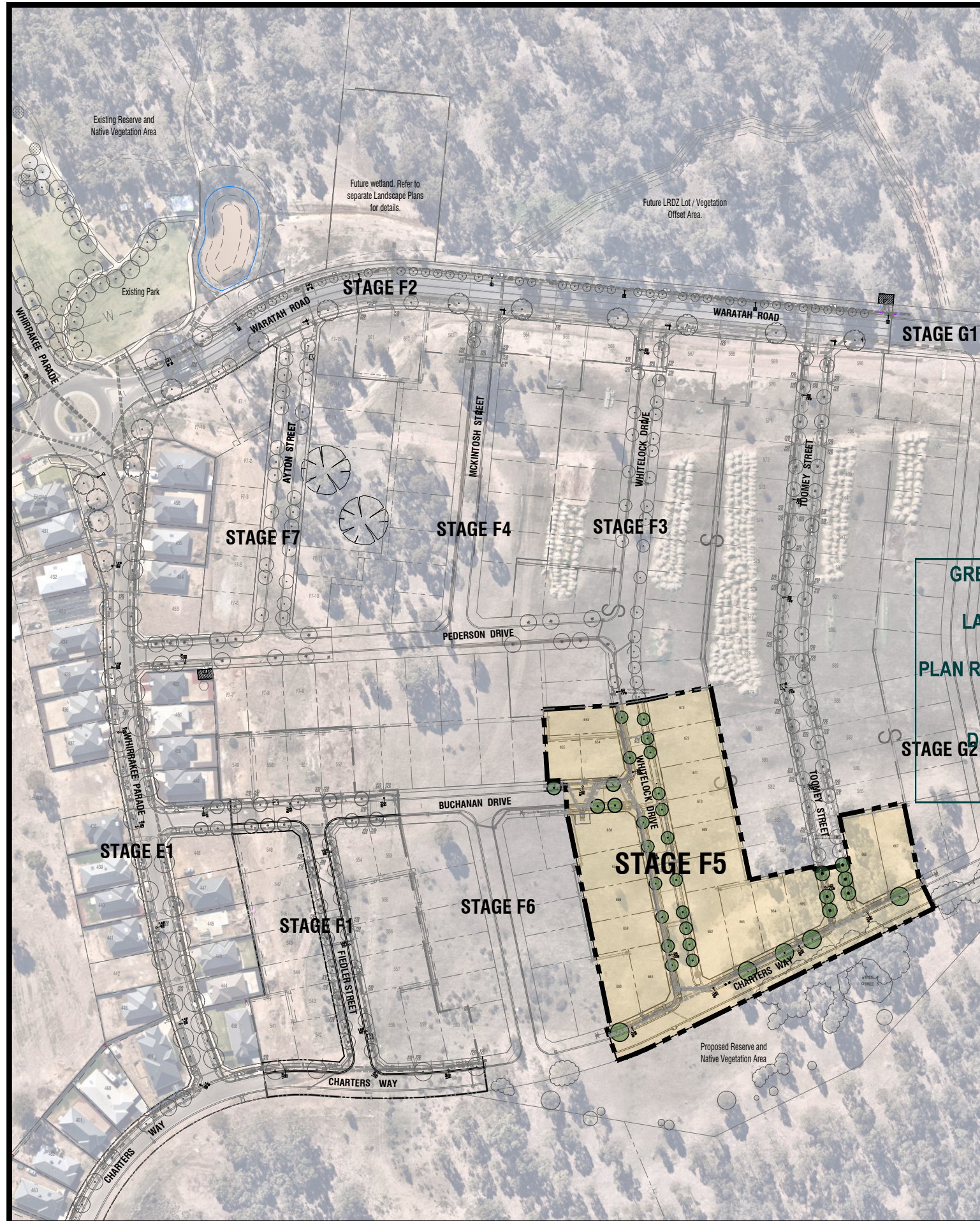
Typical Advanced Tree Planting Detail



Tree Planting Detail (nts).



Tree Guard Setout (nts).



Stage F5, Viewpoint - Context Plan (nts).

TP1	Town Planning Approval	AD	31.05.22
P3	Revisions re: power and NBN plans	AD	22.03.22
P2	Revisions re: Power and NBN plans	AD	25.02.22
P1	Preliminary Issue for Client Review	AD	21.12.21
Revision	Description	Initials	Date

APPROVAL ISSUE

Notes

- PLANNING PERMIT NUMBER - DS/903/2020
- All dimensions to be checked on site before commencing work. All measurements are in metres, unless otherwise shown.
 - The locations of underground services and light poles are indicative only - refer to electrical plans for electrical and service offsets.
 - The location and depth of services shall be verified on site prior to the commencement of works. The Contractor shall be liable for any damage to services during the landscape works.
 - Standard Street Tree Offsets.
 - It is assumed that all Underground Cable in close proximity to the 'tree zone' * (5m diameter x 600mm depth) shall be within conduits or have cover slabs to provide a higher level of infrastructure protection. (*Refer 12.0 'Distribution Construction Standard Underground Trenching GA211' by Citypower and Powercor).
 - Minimum setback of 2.0m to service assets including pits and conduit crossings.
 - Minimum setback of 0.75m to domestic service tapping points and 2.0m to stormwater outlets.
 - Minimum setback of 1.0m to footpath crossings and 3.0m to driveways where they are existing or known.
 - Minimum setback of 3.0m to fire hydrants.
 - Minimum setback of 4.0m to light poles.
 - Proposed Street Trees.
 - Where possible, trees are planted to allow a driveway within 7.0m from the Title Boundary.
 - Tree position in front of lots may change slightly due to 'actual' location of services, and constructed driveway crossings.
 - Setback from intersection (kerb) shall be a minimum of 10m.
 - Existing Trees and Vegetation. The Contractor shall confirm and protect any existing vegetation during landscape works in accordance with the Planning Permit, DWELP and Council requirements and any other agreements.
 - Planting. All trees shall be planted in accordance with typical details, unless otherwise specified.
 - Mulch. Street Tree Mulch shall be recycled hardwood for mulch.
 - Grass Seeding. Reseed nature strips and other grassed areas where there has been disturbance due to landscape works with a proprietary hardy mix, unless otherwise specified.

GREATER BENDIGO CITY COUNCIL

LANDSCAPE PLANS APPROVED

PLAN REFERRED TO IN PLANNING PERMIT NO: DS/903/2020

Delegated Officer: Jane Marriott

Date: 14 June 2022



Client / Project

Intega

Viewpoint - Stage F5
Huntly, Bendigo

Drawing Title			
Contents, Context Plan and Plant Schedule			
Drawn	Approved	Date	North
AD	RH	31.05.2022	
Scale (A1)	Scale (A3)	Sheet	
NTS	NTS	1 of 3	

PLA496-L01 TP1

TP1	Town Planning Approval	AD	31.05.22
P3	Revisions re: power and NBN plans	AD	22.03.22
P2	Revisions re: Power and NBN plans	AD	25.02.22
P1	Preliminary Issue for Client Review	AD	21.12.21
Revision	Description	Initials	Date

APPROVAL ISSUE

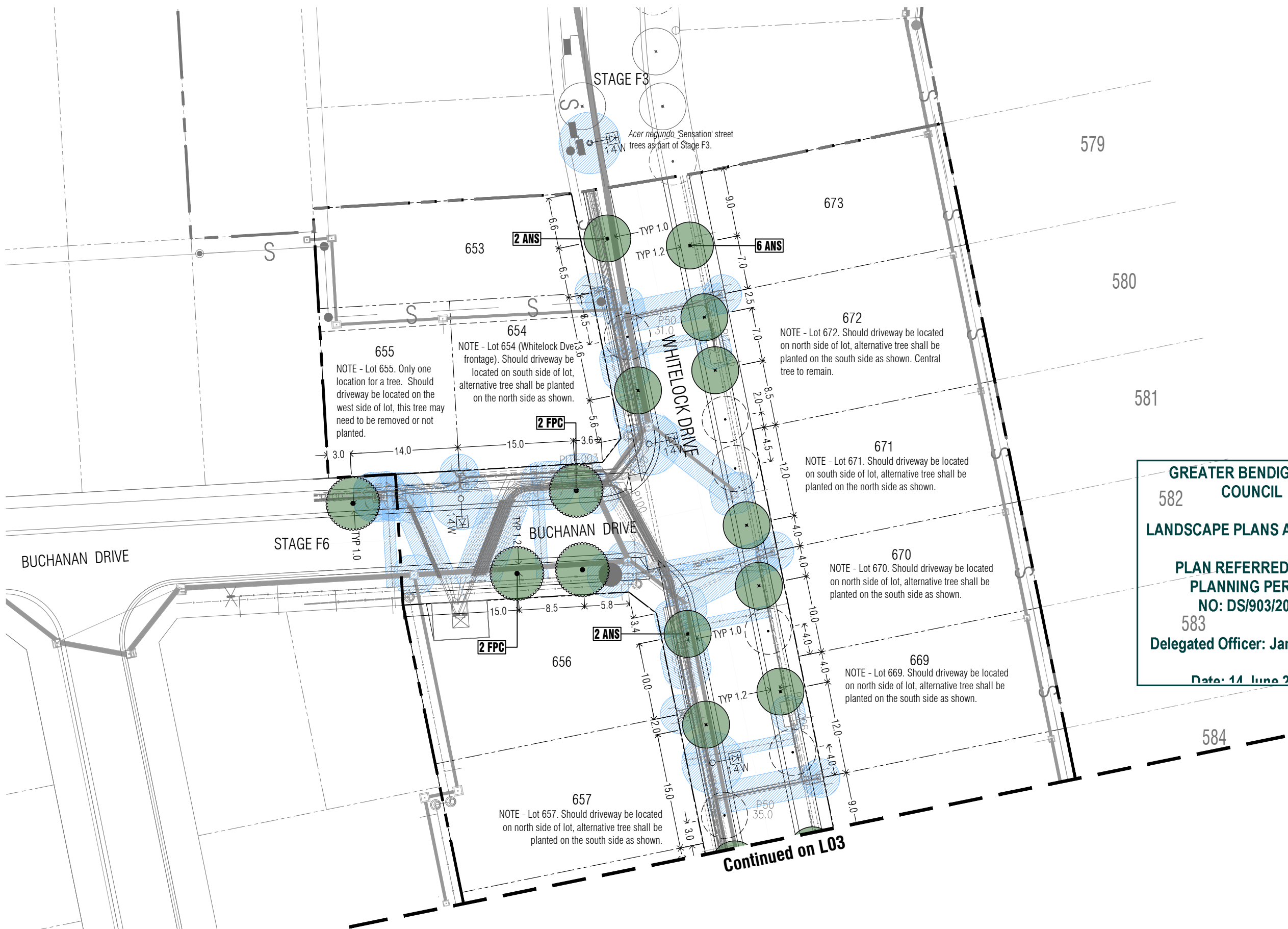
Notes

- PLANNING PERMIT NUMBER - DS/903/2020**
- All dimensions to be checked on site before commencing work. All measurements are in metres, unless otherwise shown.
 - The locations of underground services and light poles are indicative only - refer to electrical plans for electrical and service offsets.
 - The location and depth of services shall be verified on site prior to the commencement of works. The Contractor shall be liable for any damage to services during the landscape works.
 - Standard Street Tree Offsets.
 - It is assumed that all Underground Cable in close proximity to the 'tree zone' * (5m diameter x 600mm depth) shall be within conduits or have cover slabs to provide a higher level of infrastructure protection. (*Refer 12.0 'Distribution Construction Standard Underground Trenching GA211' by Citypower and Powercor).
 - Minimum setback of 2.0m to service assets including pits and conduit crossings.
 - Minimum setback of 0.75m to domestic service tapping points and 2.0m to stormwater outlets.
 - Minimum setback of 1.0m to footpath crossings and 3.0m to driveways where they are existing or known.
 - Minimum setback of 3.0m to fire hydrants.
 - Minimum setback of 4.0m to light poles.
 - Proposed Street Trees.
 - Where possible, trees are planned to allow a driveway within 7.0m from the Title Boundary.
 - Tree position in front of lots may change slightly due to 'actual' location of services, and constructed driveway crossings.
 - Setback from intersection (kerb) shall be a minimum of 10m.
 - Existing Trees and Vegetation. The Contractor shall confirm and protect any existing vegetation during landscape works in accordance with the Planning Permit, DWELP and Council requirements and any other agreements.
 - Planting. All trees shall be planted in accordance with typical details, unless otherwise specified.
 - Mulch. Street Tree Mulch shall be recycled hardwood (or similar approved) unless otherwise specified.
 - Grass Seeding. Reseed nature strips and other grassed areas where there has been disturbance due to landscape works with a proprietary hardy mix, unless otherwise specified.
 - Plant Schedule. Refer to sheet L01 for Plant Schedule.

Legend

- Existing trees planted as part of another stage.
- Proposed Street Trees (*Acer negundo* 'Sensation') [ANS]
- Proposed Street Trees (*Fraxinus pennsylvanica* 'Cimmzam') [FPC]
- Alternative tree location if driveway is located where street tree is proposed.
- Service offsets / setbacks
- Plant Label and Code

GREATER BENDIGO CITY COUNCIL
 582
LANDSCAPE PLANS APPROVED
PLAN REFERRED TO IN PLANNING PERMIT NO: DS/903/2020
 583
Delegated Officer: Jane Marriott
 Date: 14 June 2022



Client / Project
Intega
 Viewpoint - Stage F5
 Huntly, Bendigo

Street Landscape Plan 1			
Drawn	Approved	Date	North
AD	RH	31.05.2022	
Scale (A1)	Scale (A3)	Sheet	
1:250	1:500	2 of 3	
Drawing Number	Revision		
PLA496-L02	TP1		

GREATER BENDIGO CITY COUNCIL

LANDSCAPE PLANS APPROVED

PLAN REFERRED TO IN PLANNING PERMIT NO: DS/903/2020

Delegated Officer: Jane Marriott

Date: 14 June 2022

1. All dimensions to be checked on site before commencing work. All measurements are in metres, unless otherwise shown.

2. The locations of underground services and light poles are indicative only - refer to electrical plans for electrical and service offsets.

3. The location and depth of services shall be verified on site prior to the commencement of works. The Contractor shall be liable for any damage to services during the landscape works.

TP1	Town Planning Approval	AD	31.05.22
P3	Revisions re: power and NBN plans	AD	22.03.22
P2	Revisions re: Power and NBN plans	AD	25.02.22
P1	Preliminary Issue for Client Review	AD	21.12.21
Revision	Description	Initials	Date
Status	APPROVAL ISSUE		

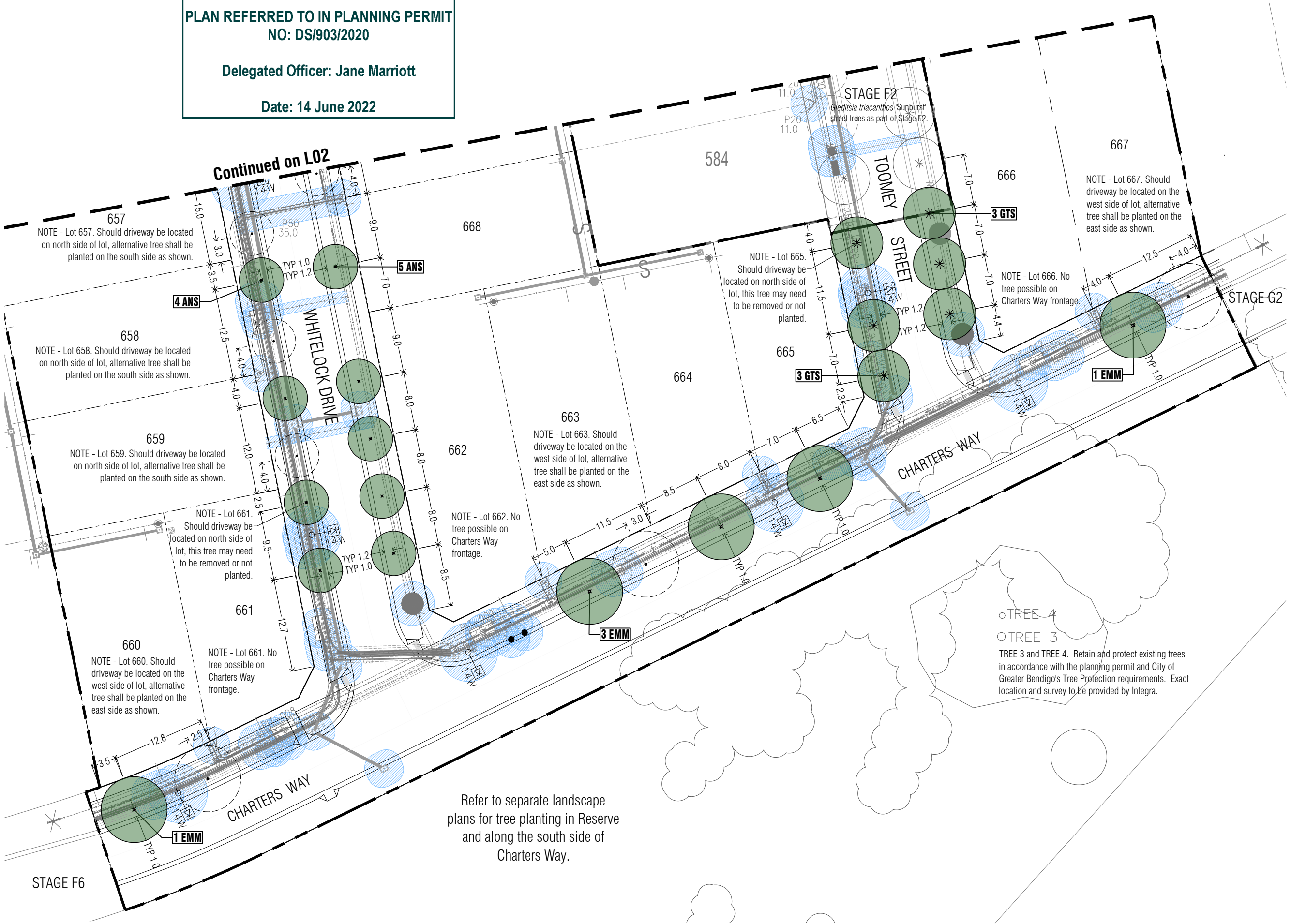
Notes

PLANNING PERMIT NUMBER - DS/903/2020

- Standard Street Tree Offsets.
 - It is assumed that all Underground Cable in close proximity to the 'tree zone' (5m diameter x 600mm depth) shall be within conduits or have cover slabs to provide a higher level of infrastructure protection. (*Refer 12.0 Distribution Construction Standard Underground Trenching GA211' by Citypower and Powercor).
 - Minimum setback of 2.0m to service assets including pits and conduit crossings.
 - Minimum setback of 0.75m to domestic service tapping points and 2.0m to stormwater outlets.
 - Minimum setback of 1.0m to footpath crossings and 3.0m to driveways where they are existing or known.
 - Minimum setback of 3.0m to fire hydrants.
 - Minimum setback of 4.0m to light poles.
- Proposed Street Trees.
 - Where possible, trees are planted to allow a driveway within 7.0m from the Title Boundary.
 - Tree position in front of lots may change slightly due to 'actual' location of services, and constructed driveway crossings.
 - Setback from intersection (kerb) shall be a minimum of 10m.
- Existing Trees and Vegetation. The Contractor shall confirm and protect any existing vegetation during landscape works in accordance with the Planning Permit, DWELP and Council requirements and any other agreements.
- Planting. All trees shall be planted in accordance with typical details, unless otherwise specified.
- Mulch. Street Tree Mulch shall be recycled hardwood (or similar approved) unless otherwise specified.
- Grass Seeding. Reseed nature strips and other grassed areas where there has been disturbance due to landscape works with a proprietary hardy mix, unless otherwise specified.
- Plant Schedule. Refer to sheet L01 for Plant Schedule.

Legend

	Existing trees (from aerial photography) to be retained in Reserve.
	Existing trees planted as part of another stage.
	Proposed Street Trees (<i>Gleditsia triacanthos</i> 'Sunburst') [GTS]
	Proposed Street Trees (<i>Acer negundo</i> 'Sensation') [ANS]
	Proposed Street Trees (<i>Eucalyptus mannifera</i> subsp. <i>maculosa</i>) [EMM]
	Alternative tree location if driveway is located where street tree is proposed.
	Service offsets / setbacks
	Plant Label and Code



Refer to separate landscape plans for tree planting in Reserve and along the south side of Charters Way.



Client / Project

Integra
Viewpoint - Stage F5
Huntly, Bendigo

Drawing Title

Street Landscape Plan 2

Drawn	Approved	Date	North
AD	RH	31.05.2022	
Scale (A1)	Scale (A3)	Sheet	
1:250	1:500	3 of 3	

This drawing and design is protected by copyright © PLOT Landscape Architects Pty Ltd. www.plota.com.au

Drawing Number

PLA496-L03

Revision

TP1