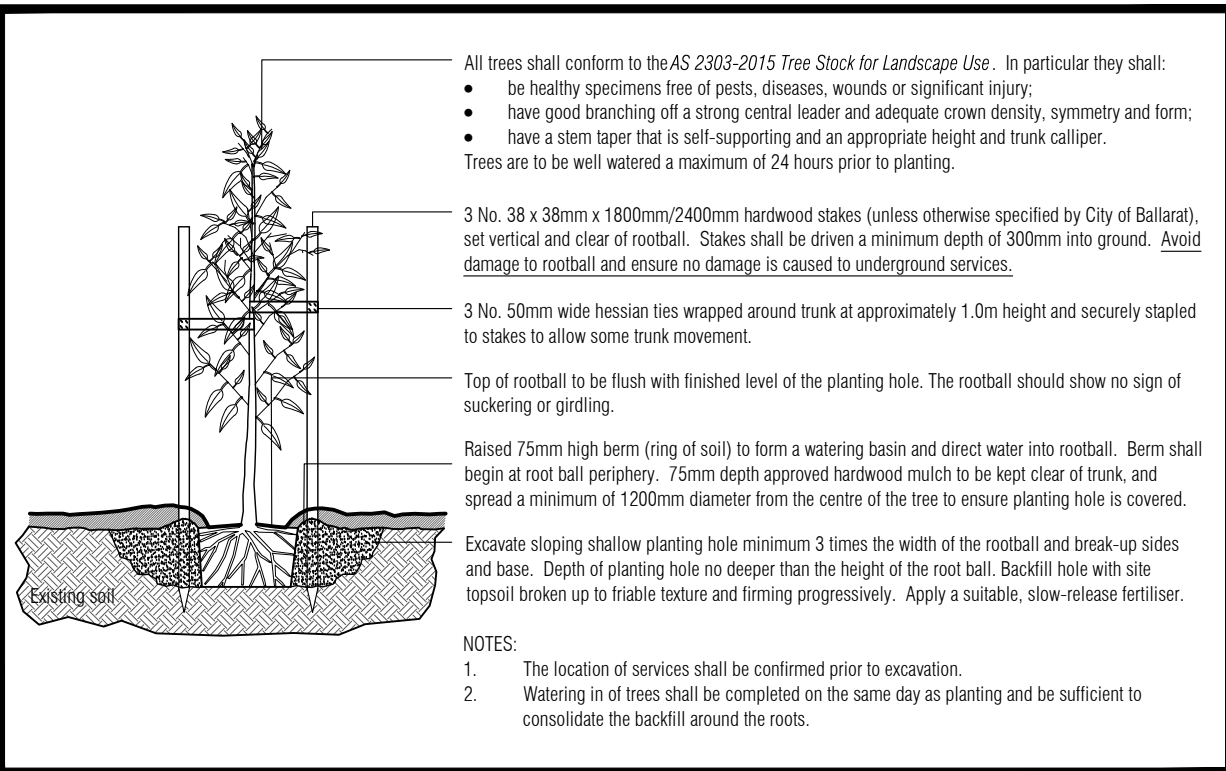




CONTEXT AND SHEET LAYOUT PLAN - STAGE L3, LUCAS



TYPICAL TREE PLANTING DETAIL

NOT TO SCALE.

CONTENTS:

Drawing Number
PLA477-L01 Context / Sheet Layout and Plant Schedules
PLA477-L02 Street Tree Plan 01
PLA477-L03 Street Tree Plan 02
PLA477-L04 Street Tree Plan 03

| | | | |
|----------|-------------------------------------|----------|----------|
| TP1 | Town Planning Approval | AD | 21.06.22 |
| P3 | Revisions re: NBN plan | AD | 18.03.22 |
| P2 | Revisions re: NBN and power plans | AD | 10.03.22 |
| P1 | Preliminary Issue for Client Review | AD | 27.01.22 |
| Revision | Description | Initials | Date |

APPROVAL ISSUE

Planning Permit PLP/2019/607/A

Notes

1. All dimensions to be checked on site before commencing work. All measurements are in metres, unless otherwise shown.
2. The locations of underground services and light poles are indicative only - refer to engineering drawings for design service offsets.
3. The location and depth of services shall be verified on site prior to the commencement of works. The Contractor shall be liable for any damage to services during the landscape works.
4. Standard Street Tree Offsets.
 - Standard offset from the back of kerb is 1.2m unless otherwise shown.
 - It is assumed that all Underground Cable in close proximity to the 'tree zone' (5m diameter x 600mm depth) shall be within conduits or have cover slabs to provide a higher level of infrastructure protection. (*Refer 12.0 'Distribution Construction Standard Underground Trenching GA211' by Citypower and Powercor).
 - Minimum setback of 2.5m to underground electricity cable joints / tees.
 - Minimum setback of 2.0m to service assets including pits and conduit crossings.
 - Minimum setback of 0.75m to domestic service tapping points and 2.0m to stormwater outlets.
 - Minimum setback of 1.2m to footpath crossings and 3.0m to driveways where they are existing or known.
 - Minimum setback of 3.0m to fire hydrants.
 - Minimum setback of 4.0m to light poles.
5. Proposed Street Trees.
 - Tree position in front of lots may change slightly due to 'actual' location of services, and constructed driveway crossings.
 - Setback from intersection (kerb) shall be a minimum of 10m in accordance with City of Ballarat Landscape Design Manual (LDM).
 - Following City of Ballarat approval of these landscape plans any variation to the number or species of street trees requires approval by City of Ballarat.
6. Planting. All trees, shrubs and groundcovers shall be planted in accordance with LDM, unless otherwise specified.
7. Mulch. Mulch shall be recycled hardwood (or similar approved) in general accordance with LDM, unless otherwise specified.
8. Grass Seeding. Reseed nature strips and other grassed areas where there has been disturbance due to landscape works with a proprietary grass seed mix in accordance with the LDM.

RAIL TRAIL INTERFACE PLANTING SCHEDULE

Groundcover Planting Mix

| Distribn | Botanical Name | Common Name | Container size | Plant Mix Area (m ²) | GP1 | Total |
|----------|--|------------------------|------------------|----------------------------------|------------|------------|
| 15.0% | <i>Chrysocephalum apiculatum</i> | Common Everlasting | Tubestock / Hiko | 6.00 | 75 | 75 |
| 15.0% | <i>Dianella admixta</i> (syn <i>revoluta</i>) | Black-anther Flax-lily | Tubestock / Hiko | 4.00 | 50 | 50 |
| 15.0% | <i>Lomandra filiformis</i> ssp <i>filiformis</i> | Wattle Mat-rush | Tubestock / Hiko | 6.00 | 75 | 75 |
| 10.0% | <i>Lomandra longifolia</i> | Spiny-headed Mat-rush | Tubestock / Hiko | 4.00 | 35 | 35 |
| 10.0% | <i>Poa labillardieri</i> | Common Tussock Grass | Tubestock / Hiko | 4.00 | 35 | 35 |
| 5.0% | <i>Rytidosperma racemosum</i> | Slender Wallaby Grass | Tubestock / Hiko | 6.00 | 25 | 25 |
| 5.0% | <i>Rytidosperma setaceum</i> | Bristly Wallaby Grass | Tubestock / Hiko | 6.00 | 25 | 25 |
| 25.0% | <i>Themeda triandra</i> | Kangaroo Grass | Tubestock / Hiko | 6.00 | 125 | 125 |
| 100.0% | | | | | 445 | 445 |
| | | Area planted | | 100% | | |

Note Grasses to be planted in minimum groups of 20 of each species.
Groundcovers to be planted in minimum groups of 10 of each species.
All grasses and groundcover plants to be of local provenance stock where possible.



BALLARAT PLANNING SCHEME
Amended Plan Endorsed under
Condition 3 of Permit No. PLP/2019/607/A
dated: 13.12.2019

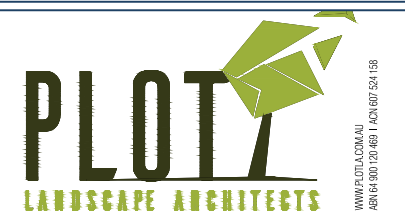
Endorsed by **Peri Bowman** for and on
behalf of the City of Ballarat Council.

Date: 12/7/2022

Sheet No: 1 of 9

MASTER STREET TREE SCHEDULE

| Code | Botanical Name | Common Name | Plant Size | Qty |
|-------|--------------------------------------|--------------------------|------------------------------------|-----|
| Trees | | | | |
| ELR | <i>Eucalyptus leucoxylon</i> 'Rosea' | Red Flowering Yellow Gum | 20 ltr container, min. height 1.2m | 3 |
| ZSG | <i>Zelkova serrata</i> 'Greenvase' | Greenvase Japanese Elm | 45 ltr container, min. height 2.2m | 37 |



Context / Sheet Layout and Plant Schedules

| | | | |
|------------|------------|------------|-------|
| Drawn | Approved | Date | North |
| AD | RH | 21.06.2022 | |
| Scale (A1) | Scale (A3) | Sheet | |
| NTS | NTS | 1 of 4 | |

PLA477-L01 **TP1**

| | | | |
|----------|-------------------------------------|----------|-----------------------|
| TP1 | Town Planning Approval | AD | 21.06.22 |
| P3 | Revisions re: NBN plan | AD | 18.03.22 |
| P2 | Revisions re: NBN and power plans | AD | 10.03.22 |
| P1 | Preliminary Issue for Client Review | AD | 27.01.22 |
| Revision | Description | Initials | Date |
| | | | APPROVAL ISSUE |

Planning Permit PLP/2019/607/A

Notes

- All dimensions to be checked on site before commencing work. All measurements are in metres, unless otherwise shown.
- The locations of underground services and light poles are indicative only - refer to engineering drawings for design service offsets.
- The location and depth of services shall be verified on site prior to the commencement of works. The Contractor shall be liable for any damage to services during the landscape works.
- Standard Street Tree Offsets.
 - Standard offset from the back of kerb is 1.2m unless otherwise shown.
 - It is assumed that all Underground Cable in close proximity to the 'tree zone' * (5m diameter x 600mm depth) shall be within conduits or have cover slabs to provide a higher level of infrastructure protection. (*Refer 12.0 'Distribution Construction Standard Underground Trenching GA211' by Citypower and Powercor).
 - Minimum setback of 2.5m to underground electricity cable joints / tees.
 - Minimum setback of 2.0m to service assets including pits and conduit crossings.
 - Minimum setback of 0.75m to domestic service tapping points and 2.0m to stormwater outlets.
 - Minimum setback of 1.2m to footpath crossings and 3.0m to driveways where they are existing or known.
 - Minimum setback of 3.0m to fire hydrants.
 - Minimum setback of 4.0m to light poles.
- Proposed Street Trees.
 - Tree position in front of lots may change slightly due to 'actual' location of services, and constructed driveway crossings.
 - Setback from intersection (kerb) shall be a minimum of 10m in accordance with City of Ballarat Landscape Design Manual (LDM).
 - Following City of Ballarat approval of these landscape plans any variation to the number or species of street trees requires approval by City of Ballarat.
- Planting. All trees, shrubs and groundcovers shall be planted in accordance with LDM, unless otherwise specified.
- Mulch. Mulch shall be recycled hardwood (or similar approved) in general accordance with LDM, unless otherwise specified.
- Grass Seeding. Reseed nature strips and other grassed areas where there has been disturbance due to landscape works with a proprietary grass seed mix in accordance with the LDM.
- Refer to drawing L01 for Plant Schedule.

Legend

- Existing street trees planted as part of another stage.
- Proposed Street Trees - *Zelkova serrata* 'Greenvase' (Greenvase Japanese Elm) [ZSG]
- Proposed Street Trees - *Eucalyptus leucocylon* 'Rosea' (Red Flowering Yellow Gum) [ELR]
- Alternative tree location if driveway is located where street tree is proposed.
- Plant Label and Code
- Service Offsets

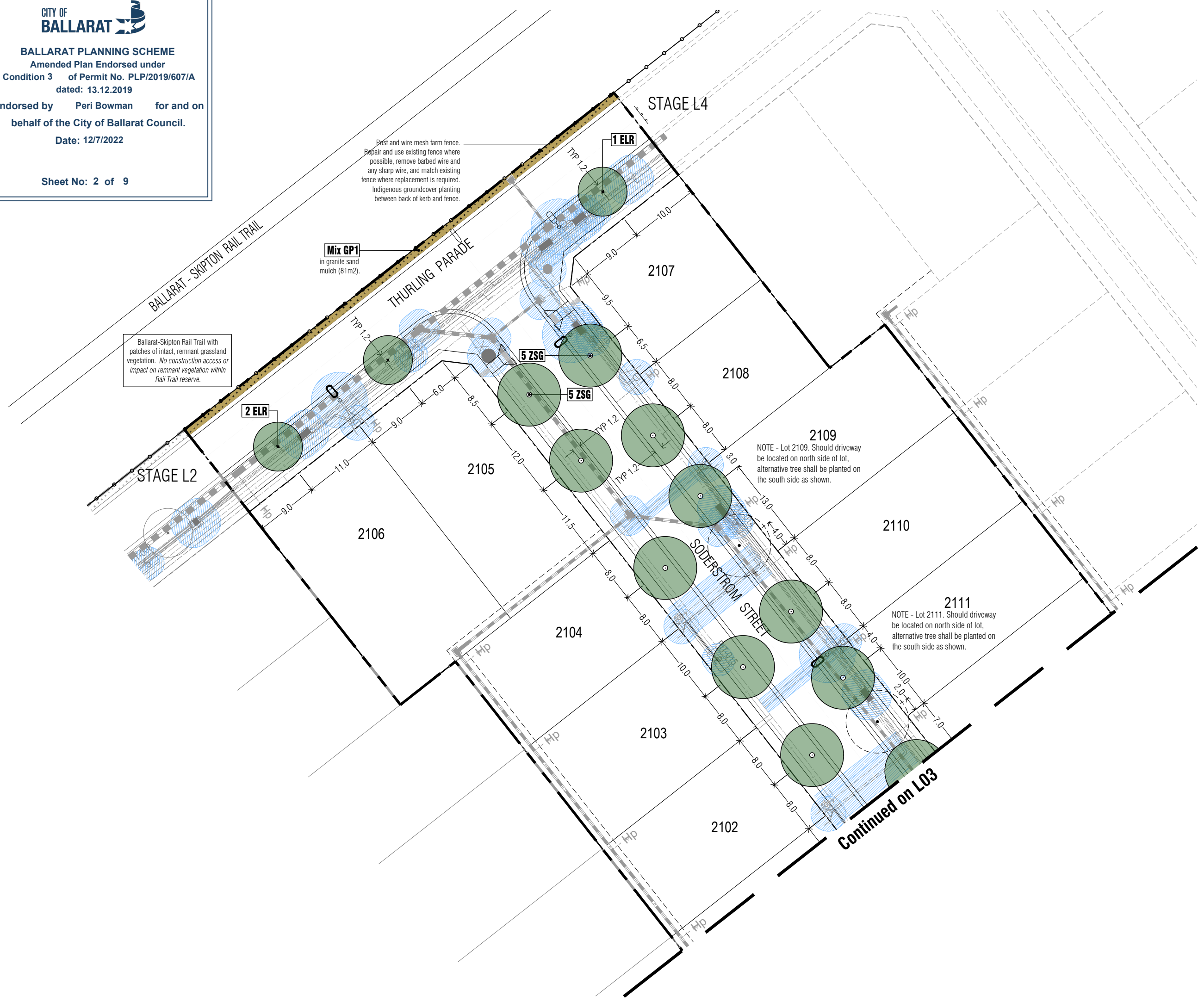


Client / Project
 Stage L3
 Lucas, Ballarat

Street Tree Plan 01

| | | | |
|------------|------------|------------|-------|
| Drawn | Approved | Date | North |
| AD | RH | 21.06.2022 | |
| Scale (A1) | Scale (A3) | Sheet | |
| 1:250 | 1:500 | 2 of 4 | |

This drawing and design is protected by copyright © PLOT Landscape Architects Pty Ltd.
 Drawing Number: **PLA477-L02** Revision: **TP1**



| | | | |
|----------|-------------------------------------|----------|----------|
| TP1 | Town Planning Approval | AD | 21.06.22 |
| P3 | Revisions re: NBN plan | AD | 18.03.22 |
| P2 | Revisions re: NBN and power plans | AD | 10.03.22 |
| P1 | Preliminary Issue for Client Review | AD | 27.01.22 |
| Revision | Description | Initials | Date |

APPROVAL ISSUE

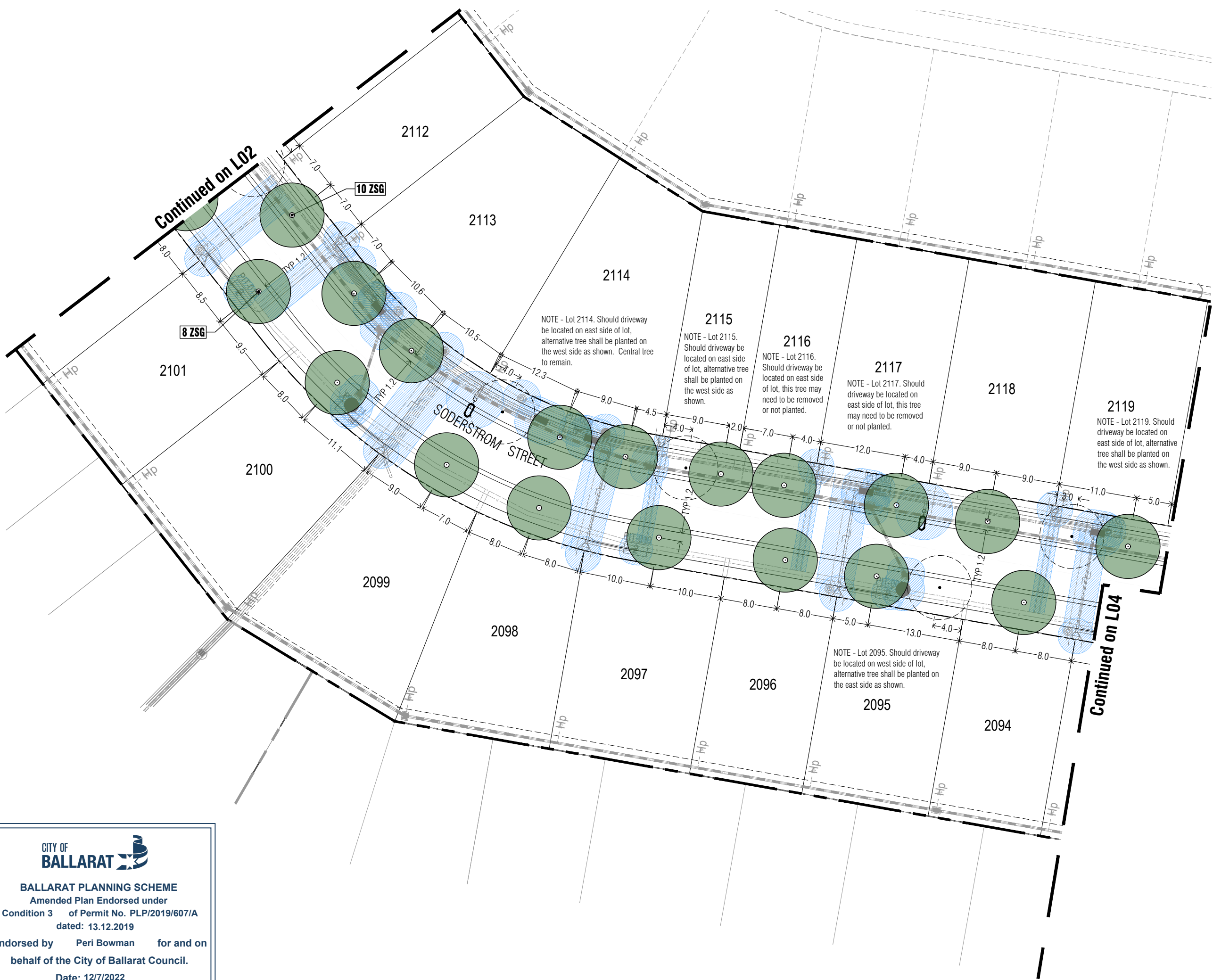
Planning Permit PLP/2019/607/A

Notes

- All dimensions to be checked on site before commencing work. All measurements are in metres, unless otherwise shown.
 - The locations of underground services and light poles are indicative only - refer to engineering drawings for design service offsets.
 - The location and depth of services shall be verified on site prior to the commencement of works. The Contractor shall be liable for any damage to services during the landscape works.
 - Standard Street Tree Offsets.
 - Standard offset from the back of kerb is 1.2m unless otherwise shown.
 - It is assumed that all Underground Cable in close proximity to the 'tree zone' * (5m diameter x 600mm depth) shall be within conduits or have cover slabs to provide a higher level of infrastructure protection. (*Refer 12.0 'Distribution Construction Standard Underground Trenching GA211' by Citypower and Powercor).
 - Minimum setback of 2.5m to underground electricity cable joints / tees.
 - Minimum setback of 2.0m to service assets including pits and conduit crossings.
 - Minimum setback of 0.75m to domestic service tapping points and 2.0m to stormwater outlets.
 - Minimum setback of 1.2m to footpath crossings and 3.0m to driveways where they are existing or known.
 - Minimum setback of 3.0m to fire hydrants.
 - Minimum setback of 4.0m to light poles.
5. Proposed Street Trees.
- Tree position in front of lots may change slightly due to 'actual' location of services, and constructed driveway crossings.
 - Setback from intersection (kerb) shall be a minimum of 10m in accordance with City of Ballarat Landscape Design Manual (LDM).
 - Following City of Ballarat approval of these landscape plans any variation to the number or species of street trees requires approval by City of Ballarat.
- Planting. All trees, shrubs and groundcovers shall be planted in accordance with LDM, unless otherwise specified.
 - Mulch. Mulch shall be recycled hardwood (or similar approved) in general accordance with LDM, unless otherwise specified.
 - Grass Seeding. Reseed nature strips and other grassed areas where there has been disturbance due to landscape works with a proprietary grass seed mix in accordance with the LDM.
 - Refer to drawing L01 for Plant Schedule.

Legend

- Existing street trees planted as part of another stage.
- Proposed Street Trees - Zelkova serrata 'Greenvase' (Greenvase Japanese Elm) [ZSG]
- Alternative tree location if driveway is located where street tree is proposed.
- Plant Label and Code
- Service Offsets



CITY OF BALLARAT

BALLARAT PLANNING SCHEME
Amended Plan Endorsed under
Condition 3 of Permit No. PLP/2019/607/A
dated: 13.12.2019

Endorsed by **Peri Bowman** for and on
behalf of the City of Ballarat Council.
Date: 12/7/2022

Sheet No: 3 of 9

PLOT LANDSCAPE ARCHITECTS

WWW.PLOT.LA.COM.AU
ABN 64 600 128 461 | ACN 607 524 158

Client / Project

Intega
Stage L3
Lucas, Ballarat

Drawing Title

Street Tree Plan 02

| | | | |
|------------|------------|------------|-------|
| Drawn | Approved | Date | North |
| AD | RH | 21.06.2022 | |
| Scale (A1) | Scale (A3) | Sheet | |
| 1:250 | 1:500 | 3 of 4 | |

This drawing and design is protected by copyright © PLOT Landscape Architects Pty Ltd.

Drawing Number

PLA477-L03

Revision

TP1

| | | | |
|----------|-------------------------------------|----------|----------|
| TP1 | Town Planning Approval | AD | 21.06.22 |
| P3 | Revisions re: NBN plan | AD | 18.03.22 |
| P2 | Revisions re: NBN and power plans | AD | 10.03.22 |
| P1 | Preliminary Issue for Client Review | AD | 27.01.22 |
| Revision | Description | Initials | Date |

APPROVAL ISSUE

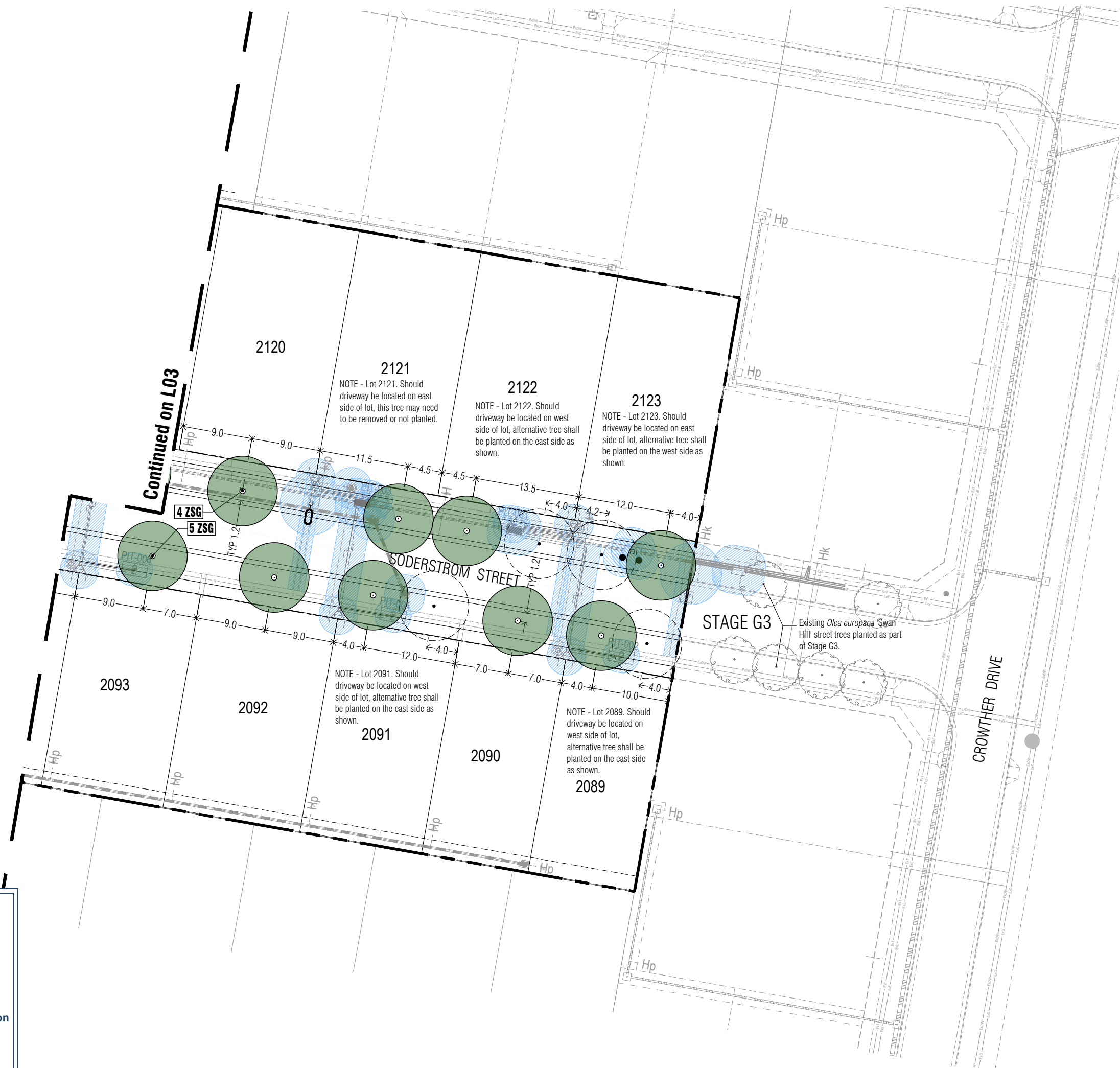
Planning Permit PLP/2019/607/A

Notes

- All dimensions to be checked on site before commencing work. All measurements are in metres, unless otherwise shown.
- The locations of underground services and light poles are indicative only - refer to engineering drawings for design service offsets.
- The location and depth of services shall be verified on site prior to the commencement of works. The Contractor shall be liable for any damage to services during the landscape works.
- Standard Street Tree Offsets.
 - Standard offset from the back of kerb is 1.2m unless otherwise shown.
 - It is assumed that all Underground Cable in close proximity to the 'tree zone' * (5m diameter x 600mm depth) shall be within conduits or have cover slabs to provide a higher level of infrastructure protection. (*Refer 12.0 'Distribution Construction Standard Underground Trenching GA211' by Citypower and Powercor).
 - Minimum setback of 2.5m to underground electricity cable joints / tees.
 - Minimum setback of 2.0m to service assets including pits and conduit crossings.
 - Minimum setback of 0.75m to domestic service tapping points and 2.0m to stormwater outlets.
 - Minimum setback of 1.2m to footpath crossings and 3.0m to driveways where they are existing or known.
 - Minimum setback of 3.0m to fire hydrants.
 - Minimum setback of 4.0m to light poles.
- Proposed Street Trees.
 - Tree position in front of lots may change slightly due to 'actual' location of services, and constructed driveway crossings.
 - Setback from intersection (kerb) shall be a minimum of 10m in accordance with City of Ballarat Landscape Design Manual (LDM).
 - Following City of Ballarat approval of these landscape plans any variation to the number or species of street trees requires approval by City of Ballarat.
- Planting. All trees, shrubs and groundcovers shall be planted in accordance with LDM, unless otherwise specified.
- Mulch. Mulch shall be recycled hardwood (or similar approved) in general accordance with LDM, unless otherwise specified.
- Grass Seeding. Reseed nature strips and other grassed areas where there has been disturbance due to landscape works with a proprietary grass seed mix in accordance with the LDM.
- Refer to drawing L01 for Plant Schedule.

Legend

- Existing street trees planted as part of another stage.
- Proposed Street Trees - Zelkova serrata 'Greenvase' (Greenvase Japanese Elm) [ZSG]
- Alternative tree location if driveway is located where street tree is proposed.
- Plant Label and Code
- Service Offsets



Continued on L03

NOTE - Lot 2121. Should driveway be located on east side of lot, this tree may need to be removed or not planted.

NOTE - Lot 2122. Should driveway be located on west side of lot, alternative tree shall be planted on the east side as shown.

NOTE - Lot 2123. Should driveway be located on east side of lot, alternative tree shall be planted on the west side as shown.

NOTE - Lot 2091. Should driveway be located on west side of lot, alternative tree shall be planted on the east side as shown.

NOTE - Lot 2089. Should driveway be located on west side of lot, alternative tree shall be planted on the east side as shown.

Existing *Olea europaea* 'Swan Hill' street trees planted as part of Stage G3.



BALLARAT PLANNING SCHEME
Amended Plan Endorsed under
Condition 3 of Permit No. PLP/2019/607/A
dated: 13.12.2019
Endorsed by Peri Bowman for and on
behalf of the City of Ballarat Council.
Date: 12/7/2022



Client / Project
Intega
Stage L3
Lucas, Ballarat

| | | | |
|--|------------|------------|-------|
| Street Tree Plan 03 | | | |
| Drawn | Approved | Date | North |
| AD | RH | 21.06.2022 | |
| Scale (A1) | Scale (A3) | Sheet | |
| 1:250 | 1:500 | 4 of 4 | |
| This drawing and design is protected by copyright © PLOT Landscape Architects Pty Ltd. | | | |
| Drawing Number | Revision | | |

PLA477-L04 TP1