

Contents.

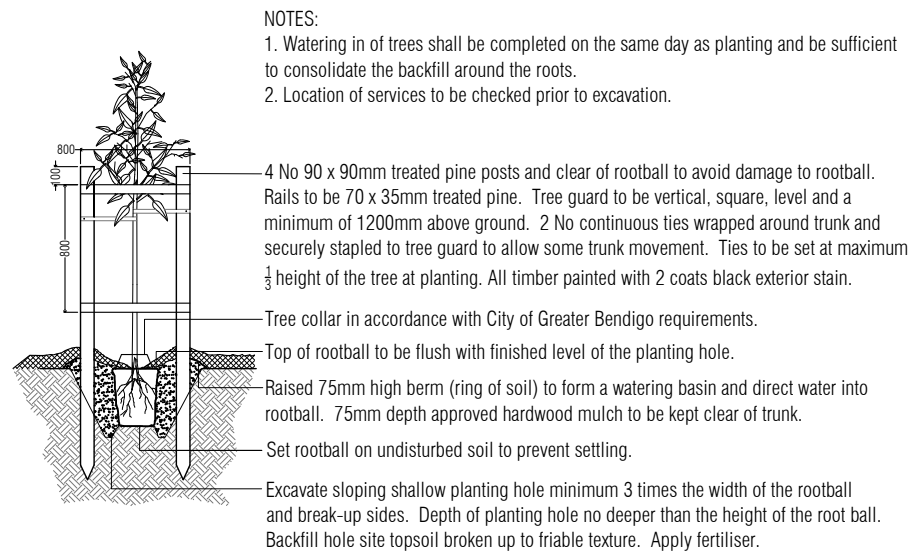
- Drawing
- PLA497-L01 Contents, Context Plan and Plant Schedule
- PLA497-L02 Street Landscape Plan 1
- PLA497-L03 Street Landscape Plan 2

Plant Schedule.

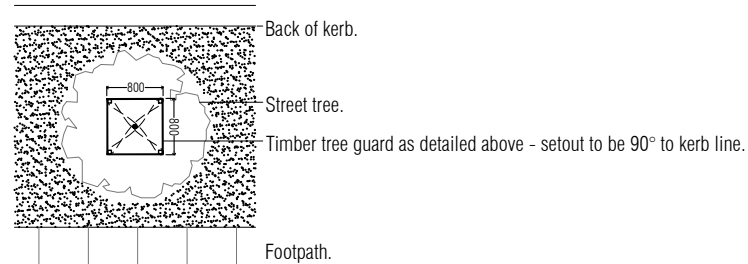
Street Trees

Code	Botanical Name	Common Name	Planting Size	Quantity
EMM	<i>Eucalyptus mannifera</i> subsp. <i>maculosa</i>	Red Spotted Gum	45 ltr container, min. 2.2m high	18
UPB	<i>Ulmus parvifolia</i> 'Burnley Select'	Burnley Select Chinese Elm	45 ltr container, min. 2.2m high	6

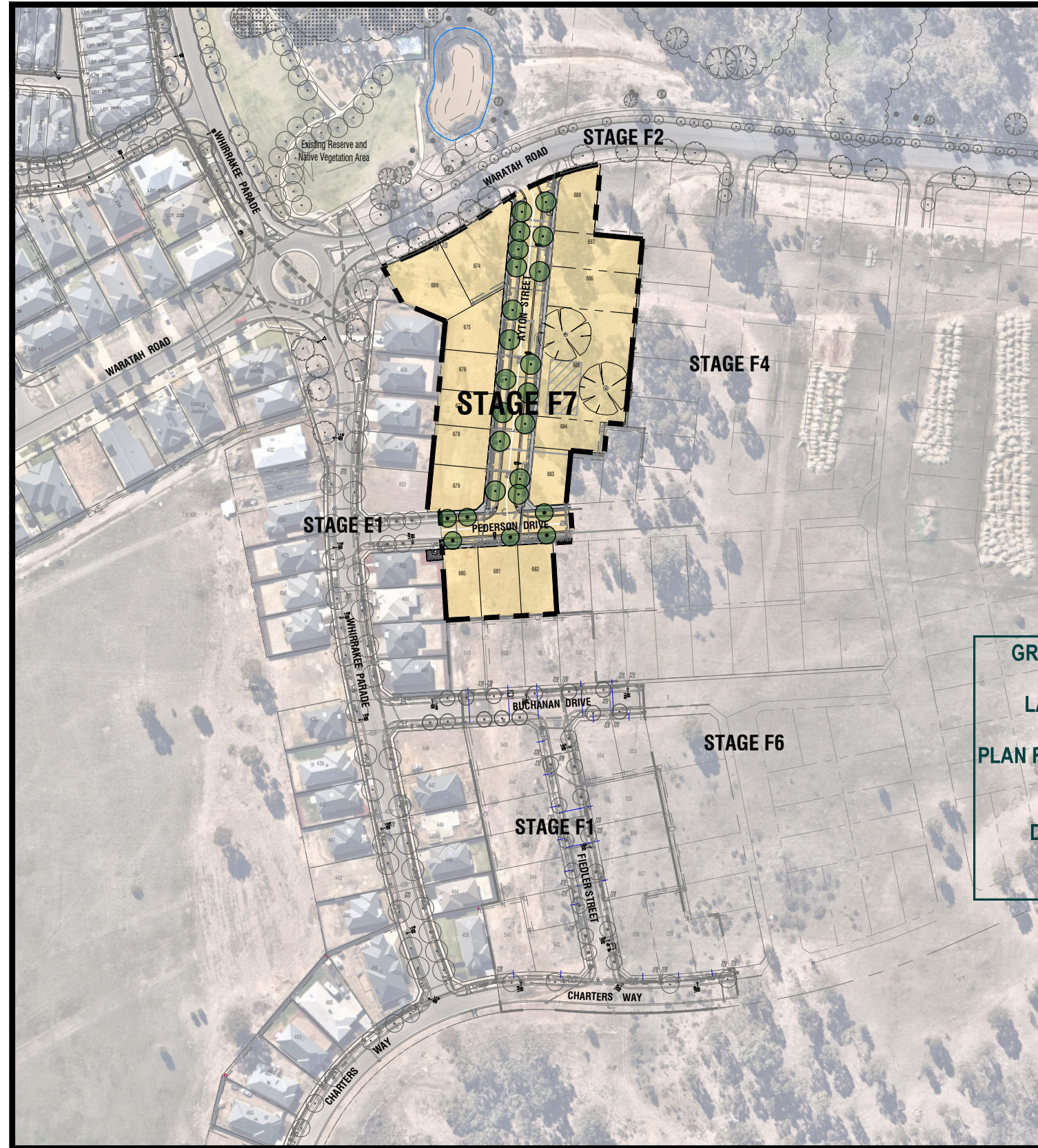
Typical Advanced Tree Planting Detail



Tree Planting Detail (nts).



Tree Guard Setout (nts).



Stage F7, Viewpoint - Context Plan (nts).

Revision	Description	Initials	Date
TP2	Revision re: tree species change	AD	21.07.22
TP1	Town Planning Approval	AD	15.07.22
P2	Revisions re: Power and NBN plans	AD	03.05.22
P1	Preliminary Issue for Client Review	AD	06.10.21

APPROVAL ISSUE

Notes

PLANNING PERMIT NUMBER - DS/903/2020

- All dimensions to be checked on site before commencing work. All measurements are in metres, unless otherwise shown.
- The locations of underground services and light poles are indicative only - refer to electrical plans for electrical and service offsets.
- The location and depth of services shall be verified on site prior to the commencement of works. The Contractor shall be liable for any damage to services during the landscape works.
- Standard Street Tree Offsets.
 - It is assumed that all Underground Cable in close proximity to the 'tree zone' (5m diameter x 600mm depth) shall be within conduits or have cover slabs to provide a higher level of infrastructure protection. (*Refer 12.0 'Distribution Construction Standard Underground Trenching GA211' by Citypower and Powercor).
 - Minimum setback of 2.0m to service assets including pits and conduit crossings.
 - Minimum setback of 0.75m to domestic service tapping points and 2.0m to stormwater outlets.
 - Minimum setback of 1.0m to footpath crossings and 3.0m to driveways where they are existing or known.
 - Minimum setback of 3.0m to fire hydrants.
 - Minimum setback of 4.0m to light poles.
- Proposed Street Trees.
 - Where possible, trees are planted to allow a driveway within 7.0m from the Title Boundary.
 - Tree position in front of lots may change slightly due to 'actual' location of services, and constructed driveway crossings.
 - Setback from intersection (kerb) shall be a minimum of 10m.
- Existing Trees and Vegetation. The Contractor shall confirm and protect any existing vegetation during landscape works in accordance with the Planning Permit, DWELP and Council requirements and any other agreements.
- Planting. All trees shall be planted in accordance with typical details, unless otherwise specified.
- Mulch. Street Tree Mulch shall be recycled hardwood (or similar approved) unless otherwise specified.
- Grass Seeding. Reseed nature strips and other grassed areas where these have been disturbed or removed. Works with a minimum 100mm depth, unless otherwise specified.

GREATER BENDIGO CITY COUNCIL

LANDSCAPE PLANS APPROVED

PLAN REFERRED TO IN PLANNING PERMIT NO: DS/903/2020

Delegated Officer: Jane Marriott

Date: 21 July 2022



Client / Project

Intega

Viewpoint - Stage F7
Huntly, Bendigo

Drawing Title

Contents, Context Plan and Plant Schedule

Drawn	Approved	Date	North
AD	RH	21.07.2022	
Scale (A1)	Scale (A3)	Sheet	
NTS	NTS	1 of 3	

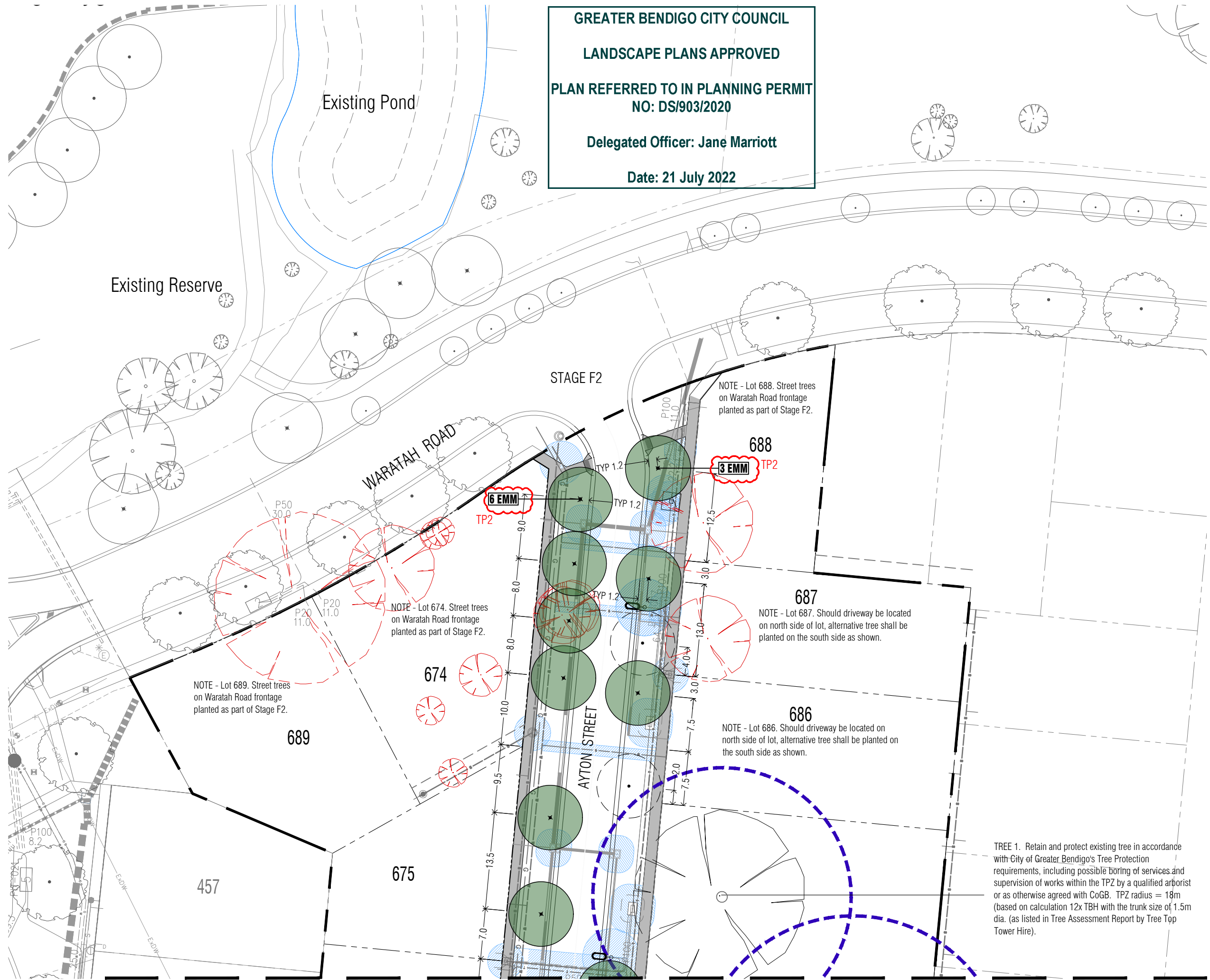
This drawing and design is protected by copyright © PLOT Landscape Architects Pty Ltd. www.plotla.com.au

Drawing Number

Revision

PLA497-L01 TP2

GREATER BENDIGO CITY COUNCIL
LANDSCAPE PLANS APPROVED
PLAN REFERRED TO IN PLANNING PERMIT
NO: DS/903/2020
Delegated Officer: Jane Marriott
Date: 21 July 2022



Revision	Description	Initials	Date	Status
TP2	Revision re: tree species change	AD	21.07.22	
TP1	Town Planning Approval	AD	15.07.22	
P2	Revisions re: Power and NBN plans	AD	03.05.22	
P1	Preliminary Issue for Client Review	AD	06.10.21	

APPROVAL ISSUE

- Notes**
- PLANNING PERMIT NUMBER - DS/903/2020**
- All dimensions to be checked on site before commencing work. All measurements are in metres, unless otherwise shown.
 - The locations of underground services and light poles are indicative only - refer to electrical plans for electrical and service offsets.
 - The location and depth of services shall be verified on site prior to the commencement of works. The Contractor shall be liable for any damage to services during the landscape works.
 - Standard Street Tree Offsets.
 - It is assumed that all Underground Cable in close proximity to the 'tree zone' * (5m diameter x 600mm depth) shall be within conduits or have cover slabs to provide a higher level of infrastructure protection. (*Refer 12.0 'Distribution Construction Standard Underground Trenching GA211' by Citypower and Powercor).
 - Minimum setback of 2.0m to service assets including pits and conduit crossings.
 - Minimum setback of 0.75m to domestic service tapping points and 2.0m to stormwater outlets.
 - Minimum setback of 1.0m to footpath crossings and 3.0m to driveways where they are existing or known.
 - Minimum setback of 3.0m to fire hydrants.
 - Minimum setback of 4.0m to light poles.
 - Proposed Street Trees.
 - Where possible, trees are planted to allow a driveway within 7.0m from the Title Boundary.
 - Tree position in front of lots may change slightly due to 'actual' location of services, and constructed driveway crossings.
 - Setback from intersection (kerb) shall be a minimum of 10m.
 - Existing Trees and Vegetation. The Contractor shall confirm and protect any existing vegetation during landscape works in accordance with the Planning Permit, DWELP and Council requirements and any other agreements.
 - Planting. All trees shall be planted in accordance with typical details, unless otherwise specified.
 - Mulch. Street Tree Mulch shall be recycled hardwood (or similar approved) unless otherwise specified.
 - Grass Seeding. Reseed nature strips and other grassed areas where there has been disturbance due to landscape works with a proprietary hardy mix, unless otherwise specified.
 - Plant Schedule. Refer to sheet L01 for Plant Schedule.

Legend

	Existing trees to be removed from survey provided by Integra.
	Existing trees to be retained and protected in accordance with CoGB Tree Protection requirements.
	Proposed Street Trees (<i>Eucalyptus mannifera</i> subsp. <i>maculosa</i>) [EMM]
	Alternative tree location if driveway is located where street tree is proposed.
	Service offsets / setbacks
	Plant Label and Code



Client / Project
Integra
 Viewpoint - Stage F7
 Huntly, Bendigo

Drawing Title
Street Landscape Plan 1

Drawn	Approved	Date	North
AD	RH	21.07.2022	

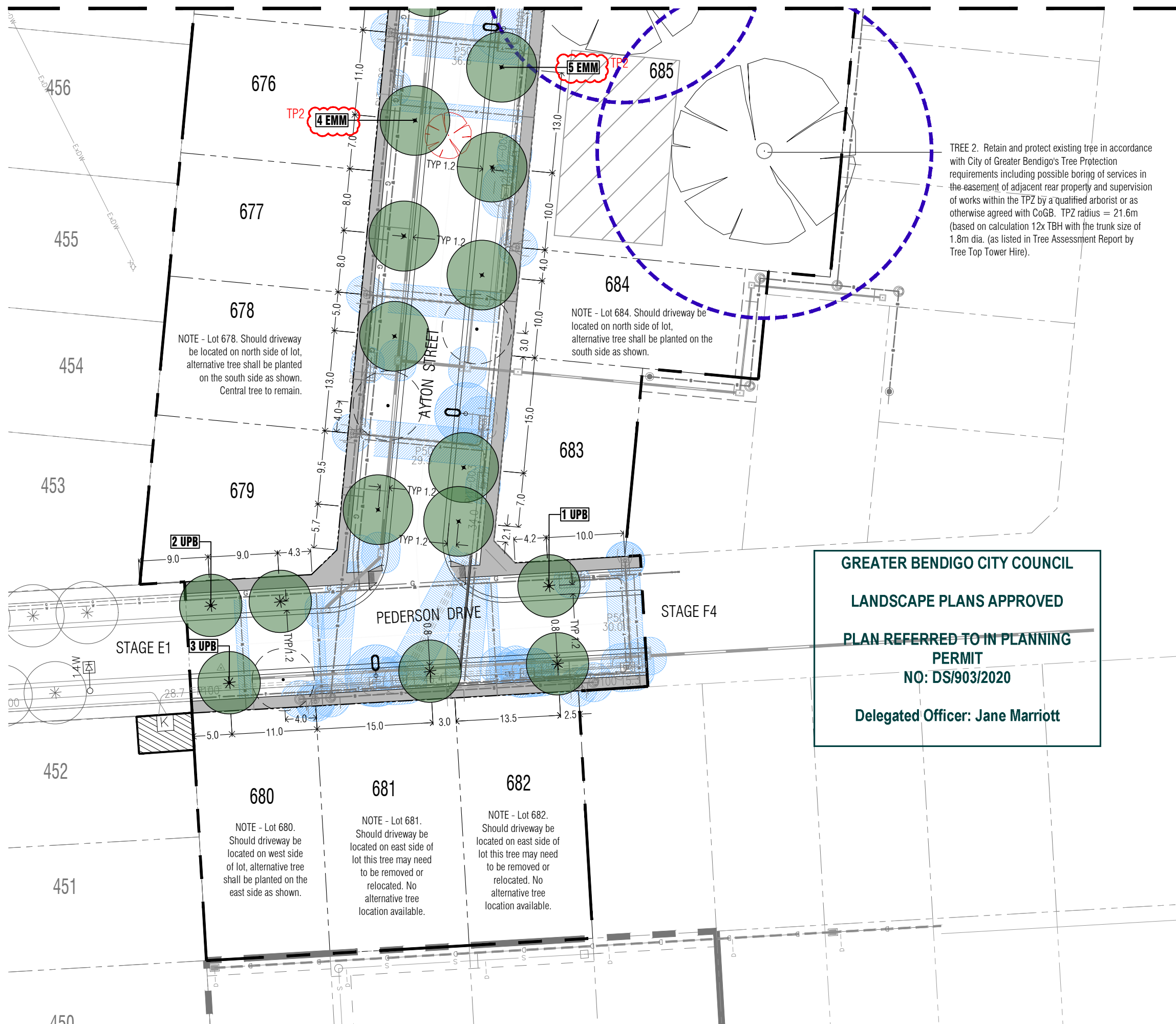
Scale (A1)	Scale (A3)	Sheet
1:250	1:500	2 of 3

This drawing and design is protected by copyright © PLOT Landscape Architects Pty Ltd. www.plotla.com.au

Drawing Number	Revision
PLA497-L02	TP2

Continued on L03

Continued on L02



GREATER BENDIGO CITY COUNCIL
LANDSCAPE PLANS APPROVED
PLAN REFERRED TO IN PLANNING PERMIT
NO: DS/903/2020
Delegated Officer: Jane Marriott

TP2	Revision re: tree species change	AD	21.07.22
TP1	Town Planning Approval	AD	15.07.22
P2	Revisions re: Power and NBN plans	AD	03.05.22
P1	Preliminary Issue for Client Review	AD	06.10.21
Revision	Description	Initials	Date

APPROVAL ISSUE

Notes

- PLANNING PERMIT NUMBER - DS/903/2020**
- All dimensions to be checked on site before commencing work. All measurements are in metres, unless otherwise shown.
 - The locations of underground services and light poles are indicative only - refer to electrical plans for electrical and service offsets.
 - The location and depth of services shall be verified on site prior to the commencement of works. The Contractor shall be liable for any damage to services during the landscape works.
 - Standard Street Tree Offsets.
 - It is assumed that all Underground Cable in close proximity to the 'tree zone' (5m diameter x 600mm depth) shall be within conduits or have cover slabs to provide a higher level of infrastructure protection. (*Refer 12.0 'Distribution Construction Standard Underground Trenching GA211' by Citypower and Powercor).
 - Minimum setback of 2.0m to service assets including pits and conduit crossings.
 - Minimum setback of 0.75m to domestic service tapping points and 2.0m to stormwater outlets.
 - Minimum setback of 1.0m to footpath crossings and 3.0m to driveways where they are existing or known.
 - Minimum setback of 3.0m to fire hydrants.
 - Minimum setback of 4.0m to light poles.
 - Proposed Street Trees.
 - Where possible, trees are planted to allow a driveway within 7.0m from the Title Boundary.
 - Tree position in front of lots may change slightly due to 'actual' location of services, and constructed driveway crossings.
 - Setback from intersection (kerb) shall be a minimum of 10m.
 - Existing Trees and Vegetation. The Contractor shall confirm and protect any existing vegetation during landscape works in accordance with the Planning Permit, DWELP and Council requirements and any other agreements.
 - Planting. All trees shall be planted in accordance with typical details, unless otherwise specified.
 - Mulch. Street Tree Mulch shall be recycled hardwood (or similar approved) unless otherwise specified.
 - Grass Seeding. Reseed nature strips and other grassed areas where there has been disturbance due to landscape works with a proprietary hardy mix, unless otherwise specified.
 - Plant Schedule. Refer to sheet L01 for Plant Schedule.

Legend

- Existing trees to be removed from survey provided by Integra.
- Existing trees to be retained and protected in accordance with CoGB Tree Protection requirements.
- Proposed Street Trees (*Eucalyptus mannifera* subsp. *maculosa*) [EMM]
- Proposed Street Trees (*Ulmus parvifolia* 'Burnley Select') [UPB]
- Alternative tree location if driveway is located where street tree is proposed.
- Service offsets / setbacks
- Plant Label and Code



Client / Project
Integra
 Viewpoint - Stage F7
 Huntly, Bendigo

Street Landscape Plan 2

Drawn	Approved	Date	North
AD	RH	21.07.2022	
Scale (A1)	Scale (A3)	Sheet	
1:250	1:500	3 of 3	

This drawing and design is protected by copyright © PLOT Landscape Architects Pty Ltd. www.plota.com.au

Drawing Number: **PLA497-L03** Revision: **TP2**