

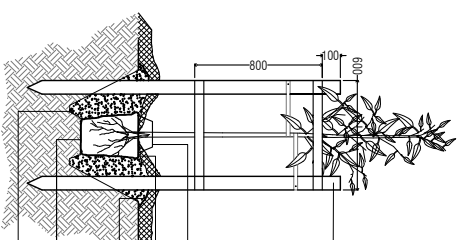
Contents.

Drawing
PLA526-L01 Contents, Context Plan and Plant Schedule
PLA526-L02 Street Landscape Plan 1
PLA526-L03 Street Landscape Plan 2

Plant Schedule.

Street Trees	Botanical Name	Common Name	Planting Size	Quantity
AVE	<i>Alicassutaina verticillata</i>	Drooping Sheoak	45 ltr container, min. 2.2m high	9
EMM	<i>Eucalyptus mannifera</i> subsp. <i>maculosa</i>	Red Spotted Gum	45 ltr container, min. 2.2m high	2
UPB	<i>Ulmus parvifolia</i> Burnley Select	Burnley Select Chinese Elm	45 ltr container, min. 2.2m high	24

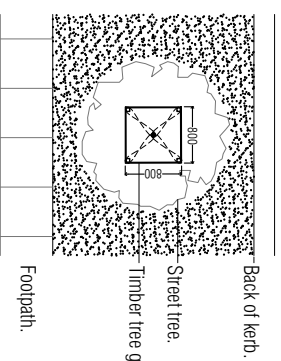
Typical Advanced Tree Planting Detail



Tree Planting Detail (nts).

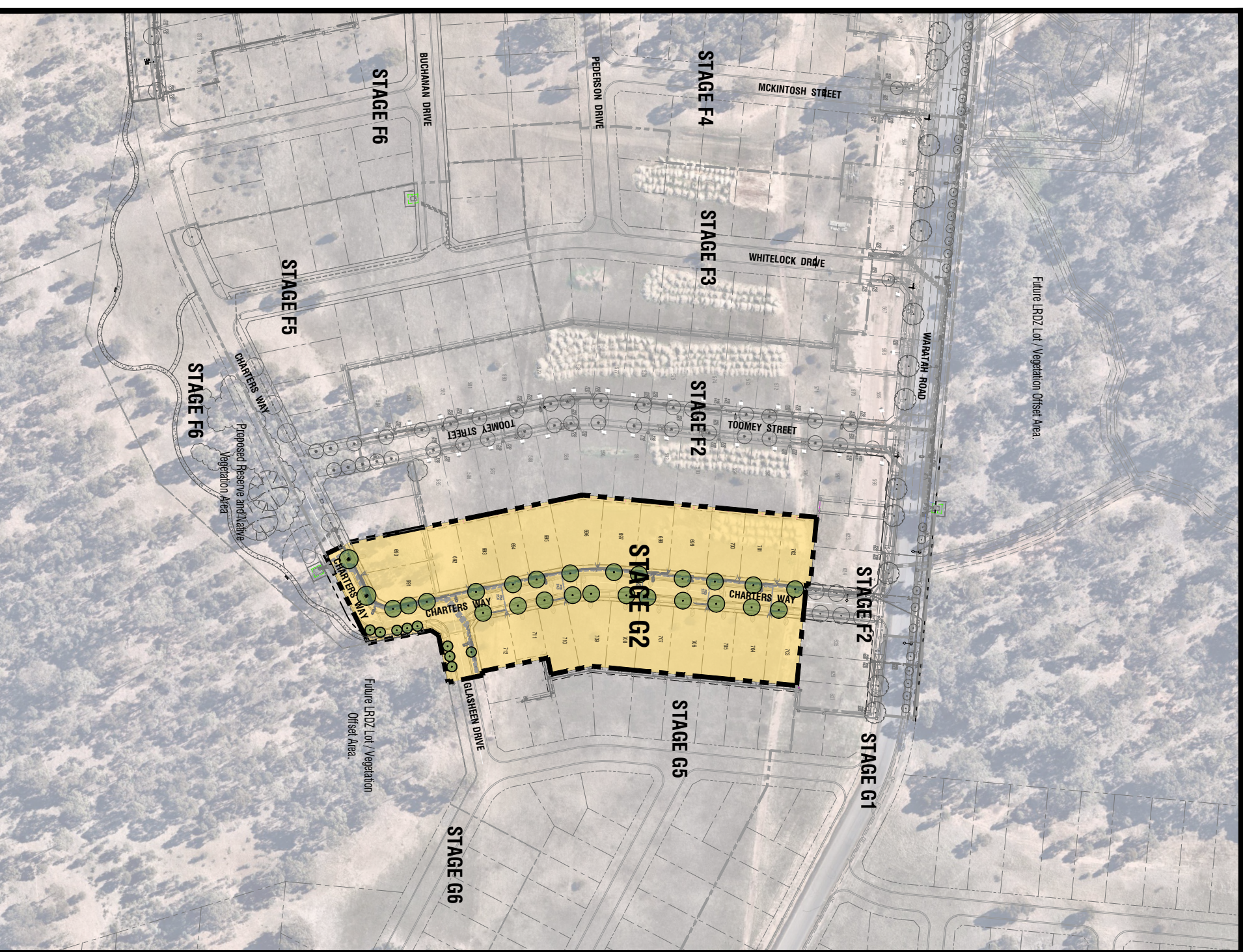
- NOTES:
1. Watering in of trees shall be completed on the same day as planting and be sufficient to consolidate the backfill around the roots.
 2. Location of services to be checked prior to excavation.

4 No 1.8m long x 70 x 65mm treated pine posts and clear of rootball to avoid damage to rootball and ensure no damage is caused to underground services. Posts to be 600mm long x 70 x 35mm treated pine. Tree guard to be vertical, square, level and a minimum of 1200mm above ground. 2 No continuous ties wrapped around trunk and securely stapled to tree guard to allow some trunk movement. Ties to be set at maximum 1/3 height of the tree at planting. All timber painted with 2 coats black exterior stain.



Tree Guard Setout (nts).

This plan is provided for marketing and information purposes only, it shows design levels only which may change during construction. Builders should check all information prior to the building process. Where discrepancies exist between the plan of subdivision and this plan, the plan of subdivision shall be taken as correct. It is the responsibility of the prospective purchaser to confirm prior to purchase, all lot levels, fill depth and all service locations are correct.



Stage G2, Viewpoint - Context Plan (nts).

Revisions to Power and NBN Plans	AD	15.08.22
P1 Preliminary Issue for Client Review	AD	18.07.22

Notes

PLANNING PERMIT NUMBER - DS/903/2020

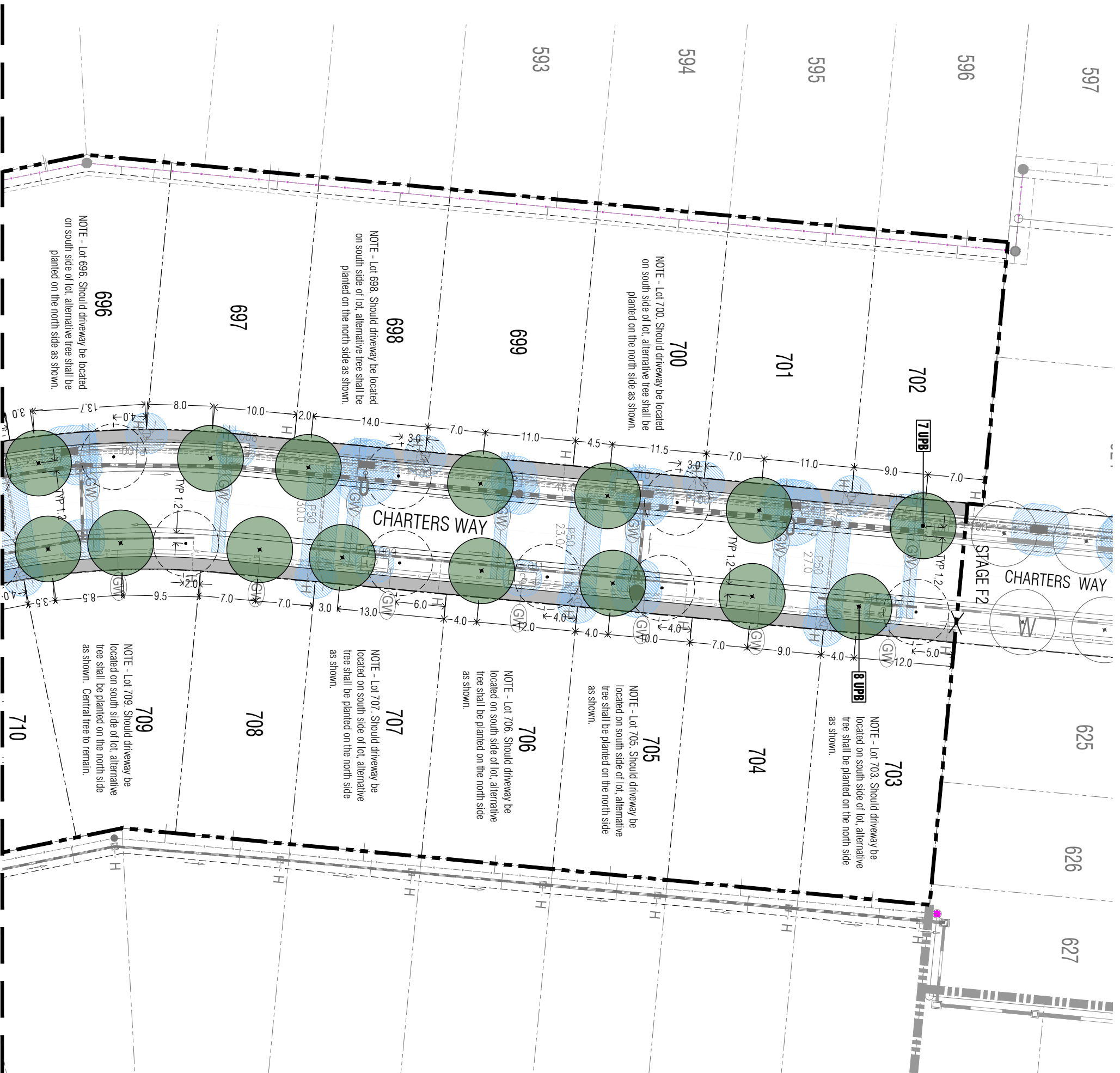
1. All dimensions to be checked on site before commencing work. All measurements are in metres, unless otherwise shown.
2. The locations of underground services and light poles are indicative only - refer to electrical plans for electrical and service offsets.
3. The location and depth of services shall be verified on site prior to the commencement of works. The Contractor shall be liable for any damage to services during the landscape works.
4. Standard Street Tree Offsets.
 - It is assumed that all Underground Cable in close proximity to the 'tree zone' (5m diameter x 600mm depth) shall be within conduits or have cover slabs to provide a higher level of infrastructure protection. (Refer 12.0 Distribution Construction Standard Underground Trenching GA2/1 by Citypower and Powerco)
 - Minimum setback of 2.0m to service assets including pits and conduit crossings.
 - Minimum setback of 0.75m to domestic service tapping points and 2.0m to stormwater outlets.
 - Minimum setback of 1.0m to footpath crossings and 3.0m to driveways where they are existing or known.
 - Minimum setbacks of 3.0m to the hydrants.
 - Minimum setbacks of 4.0m to light poles.
5. Proposed Street Trees.
 - Where possible, trees are planted to allow a driveway within 7.0m from the Title Boundary.
 - Tree position in front of lots may change slightly due to actual location of services, and constructed driveway crossings.
6. Setback from Intersection (kerb) shall be a minimum of 10m.
7. Existing trees and vegetation. The Contractor shall confirm and protect any existing vegetation during landscape works in accordance with the Planning Permit, DWELP and Council requirements and any other agreements.
8. Planting. All trees shall be planted in accordance with typical details, unless otherwise specified.
9. Similar approved) unless otherwise specified.
10. Grass Seeding. Reseal nature strips and other grassed areas where there has been disturbance due to landscape works with a proprietary hardy mix, unless otherwise specified.



Intega
 Viewpoint - Stage G2
 Humilly, Bendigo

Drawn By	Checked By	Date	Scale
AD	RH	15.08.2022	Scale A31
NTS	NTS	1 of 3	Sheet

The drawing and details are provided for signature by PLOT Landscape Architects Pty Ltd. www.plotla.com.au



Revisions	Revised	Date
P2	Revisions re- Power and NBN Plans	AD 15.08.22
P1	Preliminary Issue for Client Review	AD 18.07.22

PRELIMINARY ISSUE

Notes

- PLANNING PERMIT NUMBER - DS/903/2020**
- All dimensions to be checked on site before commencing work. All measurements are in metres, unless otherwise shown.
 - The locations of underground services and light poles are indicative only - refer to electrical plans for electrical and service offsets.
 - The location and depth of services shall be verified on site prior to the commencement of works. The Contractor shall be liable for any damage to services during the landscape works.
 - Standard Street Tree Offsets.
 - It is assumed that all Underground Cable in close proximity to the tree zone (5m diameter x 600mm depth) shall be within conduits or have cover slabs to provide a higher level of infrastructure protection. (Refer 12.0 Distribution Construction Standard Underground Trenching GA2171 by Citypower and Powerco).
 - Minimum setback of 2.0m to service assets including pits and conduit crossings.
 - Minimum setback of 0.75m to domestic service tapping points and 2.0m to stormwater outlets.
 - Minimum setback of 1.0m to footpath crossings and 3.0m to driveways where they are existing or known.
 - Minimum setback of 3.0m to the hydrants.
 - Minimum setback of 4.0m to light poles.
 - Proposed Street Trees.
 - Where possible, trees are planted to allow a driveway within 7.0m from the Title Boundary.
 - Tree position in front of lots may change slightly due to actual location of services, and constructed driveway crossings.
 - Setback from intersection (kerb) shall be a minimum of 1.0m.
 - Existing Trees and Vegetation. The Contractor shall confirm and protect any existing vegetation during landscape works in accordance with the Planning Permit, DWELP and Council requirements and any other agreements.
 - Planting. All trees shall be planted in accordance with typical details, unless otherwise specified.
 - Match. Street Tree Match shall be recycled hardwood (or similar approved) unless otherwise specified.
 - Grass Seeding. Reseed nature strips and other grassed areas where there has been disturbance due to landscape works with a proprietary hardy mix, unless otherwise specified.
 - Plant Schedule. Refer to sheet L01 for Plant Schedule.

Legend

- Existing (surveyed) trees to be retained.
- Existing trees planted as part of another stage.
- Proposed Street Trees (Ulmus parvifolia 'Bunley Select') [UPB]
- Alternative tree location if driveway is located where street tree is proposed.
- Service offsets / setbacks
- Plant Label and Code



Client Project

Intega
 Viewpoint - Stage G2
 Humilly, Bendigo

Drawing Title

Street Landscape Plan 1

Drawn	Approved	Date	Notes
AD	RH	15.08.2022	

Scale: A3: 1:250, A4: 1:500, Sheet: 2 of 3

This plan is provided for marketing and information purposes only. It shows design levels only which may change during construction. Builders should check all information prior to the building process. Where discrepancies exist between the plan of subdivision and this plan, the plan of subdivision shall be taken as correct. It is the responsibility of the prospective purchaser to confirm prior to purchase, all lot levels, fill depth and all service locations are correct.

Continued on L03

Continued on L02



Revisions	Revised By	Date
P2	Revisions re- Power and NBN plans	AD 15.08.22
P1	Preliminary Issue for Client Review	AD 18.07.22

PRELIMINARY ISSUE

Notes

PLANNING PERMIT NUMBER - DS/903/2020

- All dimensions to be checked on site before commencing work.
- Measurements are in metres, unless otherwise shown.
- The locations of underground services and light poles are indicative only - refer to electrical plans for electrical and service offsets.
- The location and depth of services shall be verified on site prior to the commencement of works. The Contractor shall be liable for any damage to services during the landscape works.
- Standard Street Tree Offsets.

- It is assumed that all underground Cable in close proximity to the "tree zone" (5m diameter x 600mm depth) shall be within conduits or have cover slabs to provide a higher level of infrastructure protection. (Refer 12.0 Distribution Construction Standard Underground Trenching GA2/17 by Citypower and Powercor)
- Minimum setback of 2.0m to service assets including pits and conduit crossings.
- Minimum setback of 0.75m to domestic service tapping points and 2.0m to stormwater outlets.
- Minimum setback of 1.0m to footpath crossings and 3.0m to driveways where they are existing or known.
- Minimum setback of 3.0m to the hydrants.
- Minimum setback of 4.0m to light poles.

- Proposed Street Trees.
- Where possible, trees are planted to allow a driveway within 7.0m from the Title Boundary.
- Tree position in front of lots may change slightly due to actual location of services, and constructed driveway crossings.
- Setback from intersection (kerb) shall be a minimum of 1.0m.
- Existing trees and vegetation. The Contractor shall confirm and protect any existing vegetation during landscape works in accordance with the Planning Permit, DWELP and Council requirements and any other agreements.
- Planting. All trees shall be planted in accordance with typical details, unless otherwise specified.
- Mulch. Street Tree Mulch shall be recycled hardwood (or similar approved) unless otherwise specified.
- Grass Seeding. Re-seed nature strips and other grassed areas where there has been disturbance due to landscape works with a proprietary hardy mix, unless otherwise specified.
- 10 Plant Schedule. Refer to sheet L01 for Plant Schedule.

Legend

- Existing (surveyed) trees to be retained.
- Existing trees planted as part of another stage.
- Proposed Street Trees (*Ulmus parvifolia* Bunley Select) [UPB]
- Proposed Street Trees (*Eucalyptus manillara* subsp. *maculosa*) [EMM]
- Proposed Street Trees (*Allocasuarina verticillata*) [AVE]
- Alternative tree location if driveway is located where street tree is proposed.
- Service offsets / setbacks
- Plant Label and Code



Client Project
PRELIMINARY

Intega
 Viewpoint - Stage G2
 Humilly, Bendigo

Drawing Title
Street Landscape Plan 2

Drawn	Approved	Date	Scale
AD	RH	15.08.2022	1:250
		Sheet	3 OF 3

This drawing and details are provided by copyright © PLOT Landscape Architects Pty Ltd. www.plot.com.au

This plan is provided for marketing and information purposes only. It shows design levels only which may change during construction. Builders should check all information prior to the building process. Where discrepancies exist between the plan of subdivision and this plan, the plan of subdivision shall be taken as correct. It is the responsibility of the prospective purchaser to confirm prior to purchase, all lot levels, fill depth and all service locations are correct.