

CONTENTS:

Drawing Number
PLA529-L01 Contents, Context and Plant Schedule
PLA529-L02 Street Tree Plan 1
PLA529-L03 Street Tree Plan 2
PLA529-L04 Street Tree Plan 3
PLA529-L05 Tree Planting Details

TP1	Town Planning Approval	AD	22.08.22
P2	Revisions re- Power and NBN plans	AD	30.05.22
P1	Preliminary Issue for Client Review	AD	11.05.22
Revision Description		Revised	Date
APPROVAL ISSUE			
Planning Permit P/P/2020/1771/A		SHEETS	

Notes

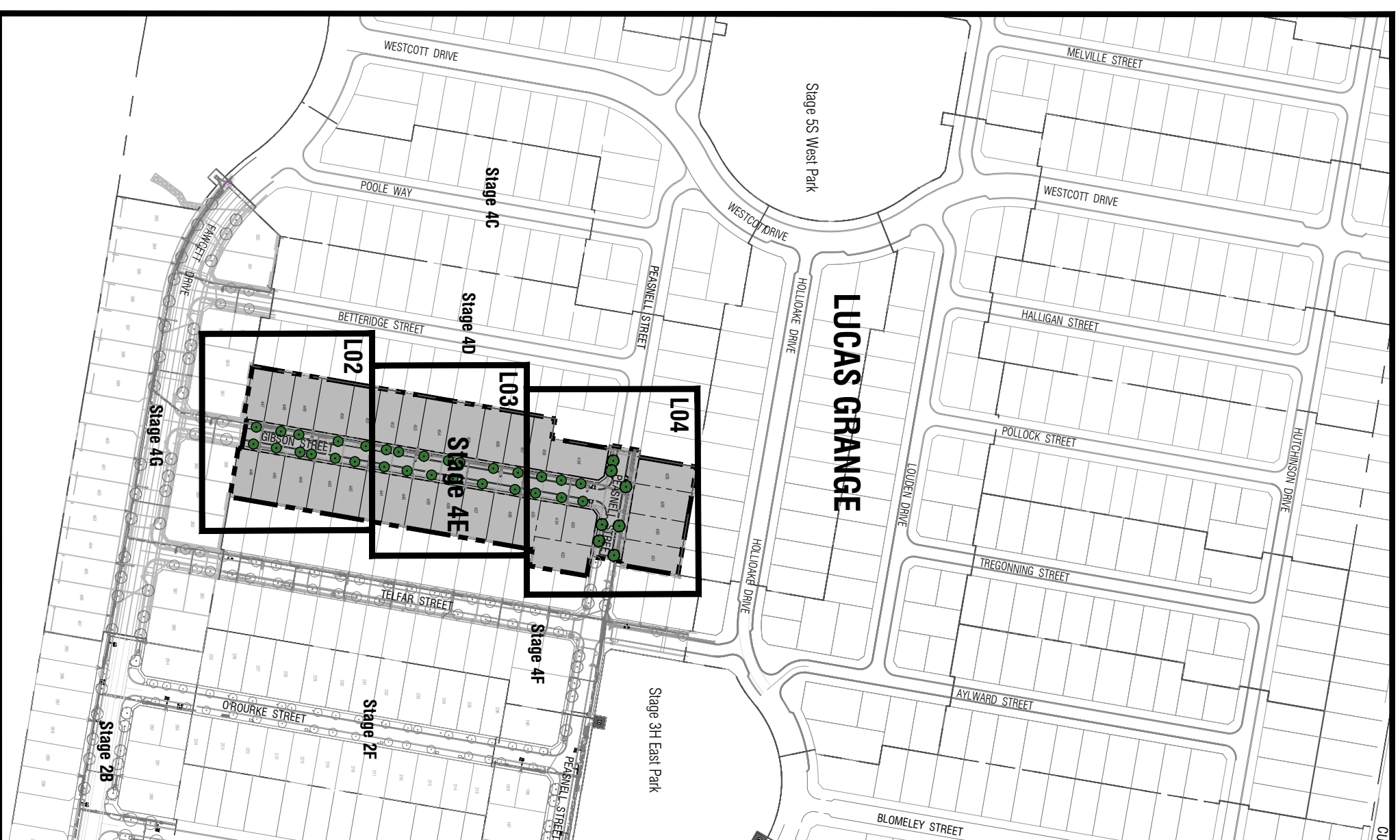
- All dimensions to be checked on site before commencing work. All measurements are in metres, unless otherwise shown.
- The locations of underground services and light poles are indicative only - refer to engineering drawings for design service offsets.
- The location and depth of services shall be verified on site prior to the commencement of works. The Contractor shall be liable for any damage to services during the landscape works.
- Standard Street Tree Offsets.
 - Standard offset from the back of kerb is 1.2m unless otherwise shown.
 - It is assumed that all Underground Cable in close proximity to the 'tree zone' * (5m diameter x 600mm depth) shall be within conduits or have cover slabs to provide a higher level of infrastructure protection. (*Refer 12.0 Distribution Construction Standard Underground Trenching GA271 by Citypower and Powerco).
 - Minimum setback of 2.5m to underground electrically cable joints / trees.
 - Minimum setback of 2.0m to service assets including pits and conduit crossings.
 - Minimum setback of 0.75m to domestic service tapping points and 2.0m to stormwater outlets.
 - Minimum setback of 1.2m to footpath crossings and 3.0m to driveways where they are existing or known.
 - Minimum setback of 3.0m to the hydrants.
 - Minimum setback of 4.0m to light poles.
- Proposed Street Trees.
 - Tree position in front of lots may change slightly due to actual location of services, and constructed driveway crossings.
 - Setback from intersection (kerb) shall be a minimum of 1.0m in accordance with City of Ballarat Landscape Design Manual (LDM).
 - Following City of Ballarat approval of these landscape plans any variation to the number or species of street trees requires approval by City of Ballarat.
 - Planting: All trees, shrubs and groundcovers shall be planted in accordance with LDM, unless otherwise specified.
 - Mulch: Mulch shall be recycled hardwood (or similar approved) in general accordance with LDM, unless otherwise specified.
 - Grass Seeding: Reseed nature strips and other grassed areas where there has been disturbance due to landscape works with a proprietary grass seed mix in accordance with the LDM.

MASTER PLANT SCHEDULE

Code	Botanical Name	Common Name	Plant Size	Qty
Trees				
PCA*	<i>Pyrus calleryana</i> 'Aristocrat'	Aristocrat Flowering Pear	45 lit container, min. 2.2m high	7
ANS	<i>Acer negundo</i> 'Sensation'	Box Elder	45 lit container, min. 2.2m high	30

NOTE

* All street trees along Paasnell Street shall have 4 post tree guard as detailed on page L05.



Client Project
Intega
 Stage 4E
 Lucas Grange, Ballarat

Contents, Context and Plant Schedule

Drawn By	AD	Approved	RH	Date	22.08.2022
Scale	1:500	Sheet	1 of 5		

This drawing and design is provided by copyright © PLOT Landscape Architects Pty Ltd.

This plan is provided for marketing and information purposes only, it shows design levels only which may change during construction. Builders should check all information prior to the building process. Where discrepancies exist between the plan of subdivision and this plan, the plan of subdivision shall be taken as correct. It is the responsibility of the prospective purchaser to confirm prior to purchase, all lot levels, fill depth and all service locations are correct.

TP1	Town Planning Approval	AD	22.08.22
P2	Revisions re- Power and NBN plans	AD	30.05.22
P1	Preliminary Issue for Client Review	AD	11.05.22

APPROVAL ISSUE

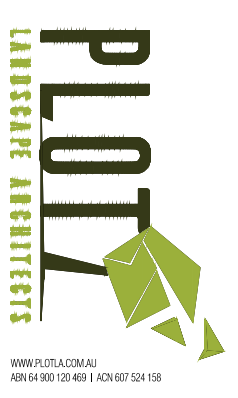
Planning Permit P/P/2020/177/A

Notes

- All dimensions to be checked on site before commencing work. All measurements are in metres, unless otherwise shown.
- The locations of underground services and light poles are indicative only - refer to engineering drawings for design service offsets.
- The location and depth of services shall be verified on site prior to the commencement of works. The Contractor shall be liable for any damage to services during the landscape works.
- Standard Street Tree Offsets.
 - Standard offset from the back of kerb is 1.2m unless otherwise shown.
 - It is assumed that all Underground Cable in close proximity to the "tree zone" * (5m diameter x 600mm depth) shall be within conduits or have cover slabs to provide a higher level of infrastructure protection. (*Refer 12.0 Distribution Construction Standard Underground Trenching G427.1 by Citypower and Powerco).
 - Minimum setback of 2.5m to underground electrically cable joints / tees.
 - Minimum setback of 2.0m to service assets including pits and conduit crossings.
 - Minimum setback of 0.75m to domestic service tapping points and 2.0m to stormwater outlets.
 - Minimum setback of 1.2m to footpath crossings and 3.0m to driveways where they are existing or known.
 - Minimum setback of 3.0m to the hydrants.
 - Minimum setback of 4.0m to light poles.
- Proposed Street Trees.
 - Tree position in front of lots may change slightly due to actual location of services, and constructed driveway crossings.
 - Setback from intersection (kerb) shall be a minimum of 10m.
 - In accordance with City of Ballarat Landscape Design Manual (LDM).
 - Following City of Ballarat approval of these landscape plans any variation to the number or species of street trees requires approval by City of Ballarat.
 - Planting All trees, shrubs and groundcovers shall be planted in accordance with LDM, unless otherwise specified.
 - 7. Mulch. Mulch shall be recycled hardwood (or similar approved) in general accordance with LDM, unless otherwise specified.
 - 8. Grass Seeding. Reseed nature strips and other grassed areas where there has been disturbance due to landscape works with a proprietary grass seed mix in accordance with the LDM.
 - 9. Refer to drawing L01 for Plant Schedule.

Legend

- Existing street trees planted as part of another stage.
- Proposed Street Trees - *Acer negundo*, *Sensation* (ANS)
- Alternative tree location if driveway is located where street tree is proposed.
- Plant Label and Code
- Service Offsets



Client / Project

Intega

Stage 4E
Lucas Grange, Ballarat

Drawing Title

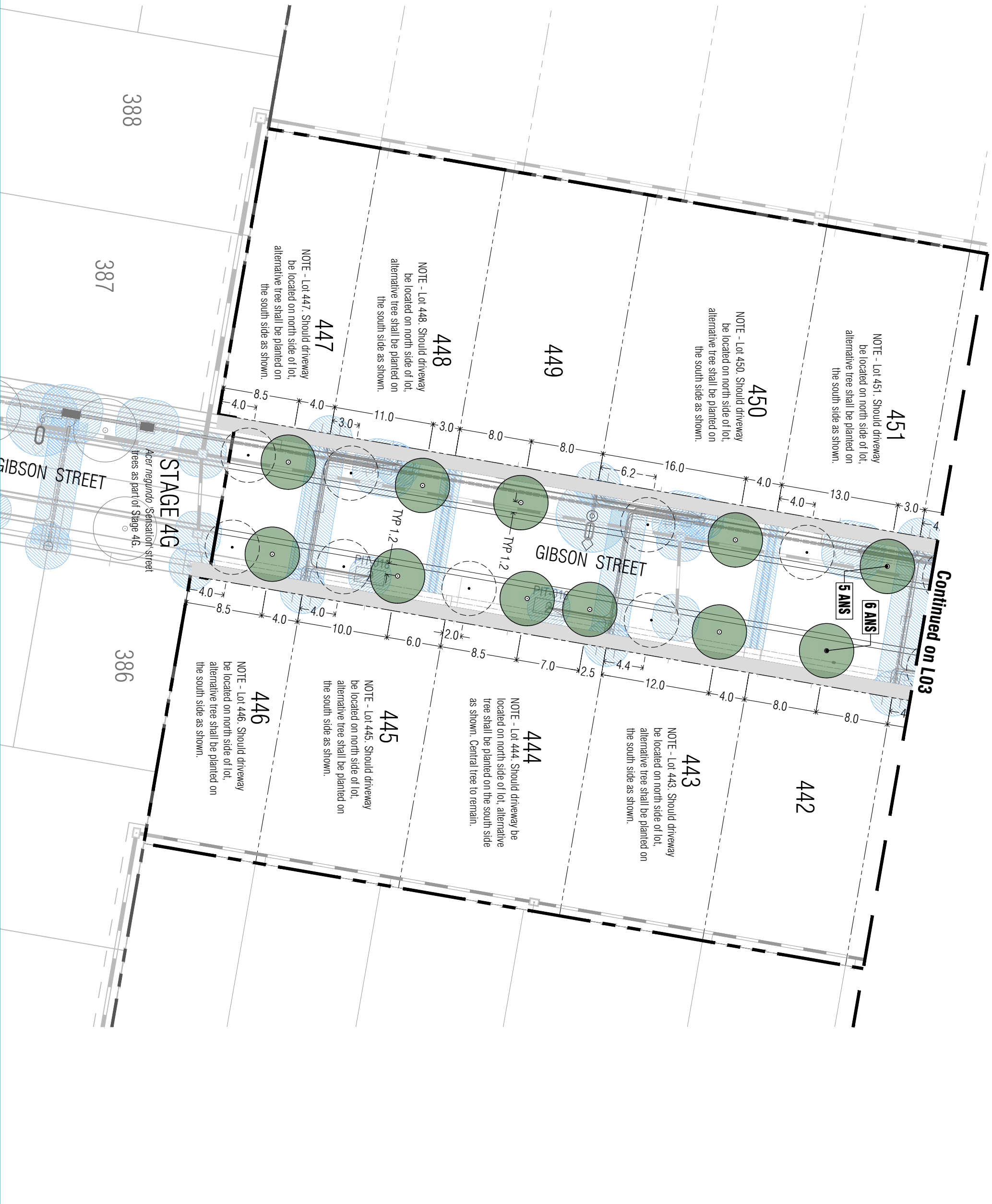
Street Tree Plan 1

Date	Revised	By	Notes
AD	RH	22.08.2022	
Scale (A3)	Scale (A4)	Sheet	
1:200	1:400	2 of 5	

This drawing and design is protected by copyright © PLOT Landscape Architects Pty Ltd.

1529-102

TP1



This plan is provided for marketing and information purposes only. It shows design levels only which may change during construction. Builders should check all information prior to the building process. Where discrepancies exist between the plan of subdivision and this plan, the plan of subdivision shall be taken as correct. It is the responsibility of the prospective purchaser to confirm prior to purchase, all lot levels, fit depth and all service locations are correct.

TP1	Town Planning Approval	AD	22.08.22
P2	Revisions re- Power and NBN plans	AD	30.05.22
P1	Preliminary Issue for Client Review	AD	11.05.22

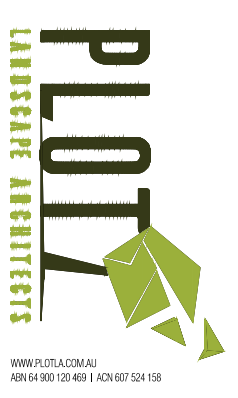
Planning Permit P/P/2020/177/A

APPROVAL ISSUE

Notes

- All dimensions to be checked on site before commencing work. All measurements are in metres, unless otherwise shown.
- The locations of underground services and light poles are indicative only - refer to engineering drawings for design service offsets.
- The location and depth of services shall be verified on site prior to the commencement of works. The Contractor shall be liable for any damage to services during the landscape works.
- Standard Street Tree Offsets.
 - Standard offset from the back of kerb is 1.2m unless otherwise shown.
 - It is assumed that all Underground Cable in close proximity to the 'tree zone' * (5m diameter x 600mm depth) shall be within conduits or have cover slabs to provide a higher level of infrastructure protection. (*Refer 12.0 Distribution Construction Standard Underground Trenching G427.1 by Cigrpower and Powerco).
 - Minimum setback of 2.5m to underground electrically cable joints / tees.
 - Minimum setback of 2.0m to service assets including pits and conduit crossings.
 - Minimum setback of 0.75m to domestic service tapping points and 2.0m to stormwater outlets.
 - Minimum setback of 1.2m to footpath crossings and 3.0m to driveways where they are existing or known.
 - Minimum setback of 3.0m to the hydrants.
 - Minimum setback of 4.0m to light poles.
- Proposed Street Trees.
 - Tree position in front of lots may change slightly due to actual location of services, and constructed driveway crossings.
 - Setback from intersection (kerb) shall be a minimum of 10m in accordance with City of Ballarat Landscape Design Manual (LDM).
 - Following City of Ballarat approval of these landscape plans any variation to the number or species of street trees requires approval by City of Ballarat.
 - Planting All trees, shrubs and groundcovers shall be planted in accordance with LDM, unless otherwise specified.
 - 7. Mulch. Mulch shall be recycled hardwood (or similar approved) in general accordance with LDM, unless otherwise specified.
 - 8. Grass Seeding. Reseed nature strips and other grassed areas where there has been disturbance due to landscape works with a proprietary grass seed mix in accordance with the LDM.
 - 9. Refer to drawing L01 for Plant Schedule.

- Legend**
- Proposed Street Trees - *Acer negundo*, *Sensation* (ANS)
 - Alternative tree location if driveway is located where street tree is proposed.
 - Plant Label and Code
 - Service Offsets



Client / Project

Intega
Stage 4E
Lucas Grange, Ballarat

Drawing Title

Street Tree Plan 2

Drawn	Approved	Date	Issue
AD	RH	22.08.2022	1
Scale (A3)	Scale (A4)	Sheet	Sheet
1:200	1:400	3 OF 5	

This drawing and design is protected by copyright © PLOT Landscape Architects Pty Ltd.

1529-103 TP1



This plan is provided for marketing and information purposes only. It shows design levels only which may change during construction. Builders should check all information prior to the building process. Where discrepancies exist between the plan of subdivision and this plan, the plan of subdivision shall be taken as correct. It is the responsibility of the prospective purchaser to confirm prior to purchase, all lot levels, fit depth and all service locations are correct.

TP1	Town Planning Approval	AD	22.08.22
P2	Revisions re- Power and NBN plans	AD	30.05.22
P1	Preliminary Issue for Client Review	AD	11.05.22
Revision Description	Issues	Date	
APPROVAL ISSUE			
Shells			

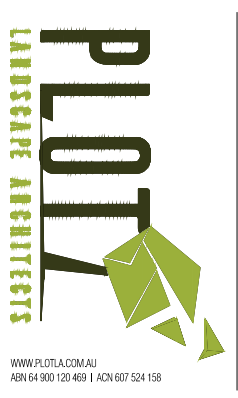
Planning Permit P/P/2020/177/A

Notes

- All dimensions to be checked on site before commencing work. All measurements are in metres, unless otherwise shown.
- The locations of underground services and light poles are indicative only - refer to engineering drawings for design service offsets.
- The location and depth of services shall be verified on site prior to the commencement of works. The Contractor shall be liable for any damage to services during the landscape works.
- Standard Street Tree Offsets.
 - Standard offset from the back of kerb is 1.2m unless otherwise shown.
 - It is assumed that all Underground Cable in close proximity to the 'tree zone' (6m diameter x 600mm depth) shall be within conduits or have cover slabs to provide a higher level of infrastructure protection. (Refer 12.0 Distribution Construction Standard Underground Trenching G427.1 by Cigrpower and Powerco).
 - Minimum setback of 2.5m to underground electrically cable joints / tees.
 - Minimum setback of 2.0m to service assets including pits and conduit crossings.
 - Minimum setback of 0.75m to domestic service tapping points and 2.0m to stormwater outlets.
 - Minimum setback of 1.2m to footpath crossings and 3.0m to driveways where they are existing or known.
 - Minimum setback of 3.0m to the hydrants.
 - Minimum setback of 4.0m to light poles.
- Proposed Street Trees.
 - Tree position in front of lots may change slightly due to actual location of services, and constructed driveway crossings.
 - Setback from intersection (kerb) shall be a minimum of 10m in accordance with City of Ballarat Landscape Design Manual (LDM).
 - Following City of Ballarat approval of these landscape plans any variation to the number or species of street trees requires approval by City of Ballarat.
 - Planting All trees, shrubs and groundcovers shall be planted in accordance with LDM, unless otherwise specified.
 - 7. Mulch. Mulch shall be recycled hardwood (or similar approved) in general accordance with LDM, unless otherwise specified.
 - 8. Grass Seeding. Reseed nature strips and other grassed areas where there has been disturbance due to landscape works with a proprietary grass seed mix in accordance with the LDM.
 - 9. Refer to drawing L01 for Plant Schedule.

Legend

- Existing street trees planted as part of another stage.
- Proposed Street Trees - *Acer negundo*, Senecio 'ANS'
- Proposed Street Trees - *Pyrus calleryana* Aristocair' [PCA]
- Alternative tree location if driveway is located where street tree is proposed.
- Plant Label and Code
- Service Offsets



Client / Project

Intega

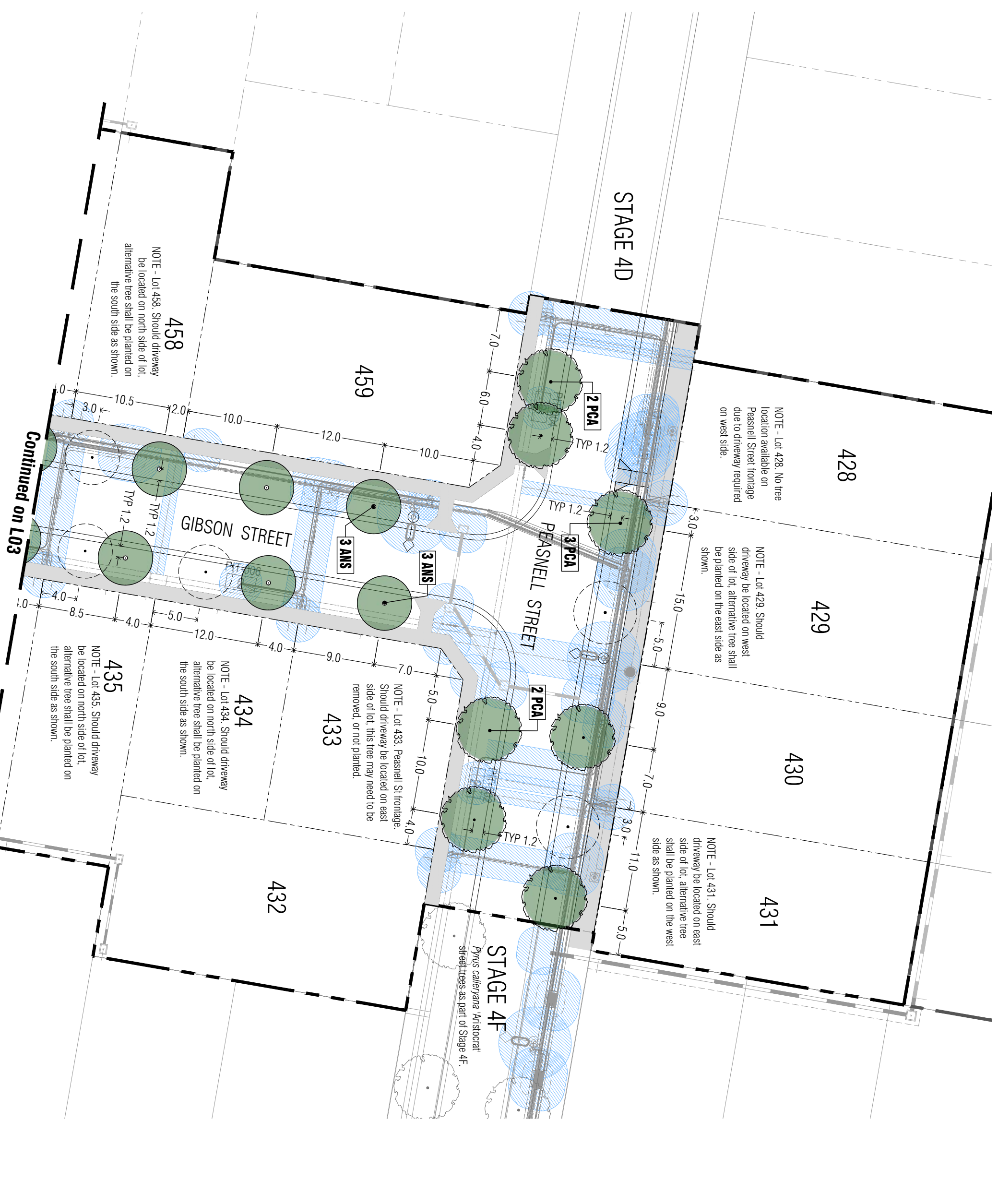
Stage 4E
Lucas Gange, Ballarat

Drawing Title

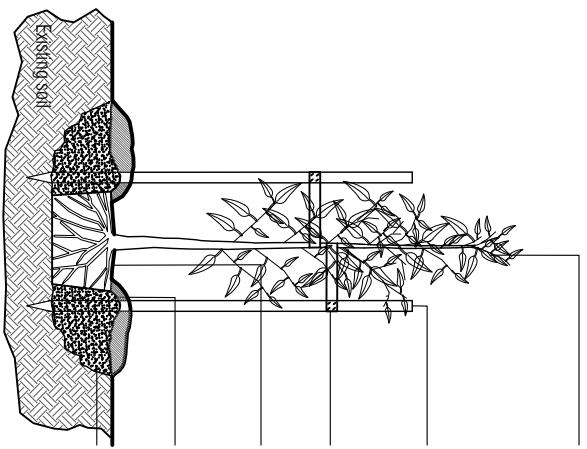
Street Tree Plan 3

Drawn	Approved	Date	Notes
AD	RH	22.08.2022	
Scale (A3)	Scale (A4)	Sheet	
1:200	1:400	4 of 5	

This drawing and design is protected by copyright © PLOT Landscape Architects Pty Ltd.



This plan is provided for marketing and information purposes only. It shows design levels only which may change during construction. Builders should check all information prior to the building process. Where discrepancies exist between the plan of subdivision and this plan, the plan of subdivision shall be taken as correct. It is the responsibility of the prospective purchaser to confirm prior to purchase, all lot levels, fit depth and all service locations are correct.



- All trees shall conform to the *AS 2303-2015 Tree Stock for Landscape Use*. In particular they shall:
- be healthy specimens free of pests, diseases, wounds or significant injury;
 - have good branching off a strong central leader and adequate crown density, symmetry and form;
 - have a stem taper that is self-supporting and an appropriate height and trunk caliper.
- Trees are to be well watered a maximum of 24 hours prior to planting.

- 3 No. 38 x 38mm x 1800mm/2400mm hardwood stakes (unless otherwise specified by City of Ballarat), set vertical and clear of rootball. Stakes shall be driven a minimum depth of 300mm into ground. Avoid damage to rootball and ensure no damage is caused to underground services.
- 3 No. 50mm wide hessian ties wrapped around trunk at approximately 1.0m height and securely stapled to stakes to allow some trunk movement.
- Top of rootball to be flush with finished level of the planting hole. The rootball should show no sign of suckering or girdling.

Raised 75mm high berm (ring of soil) to form a watering basin and direct water into rootball. Berm shall begin at root ball periphery. 75mm depth approved hardwood mulch to be kept clear of trunk, and spread a minimum of 1200mm diameter from the centre of the tree to ensure planting hole is covered.

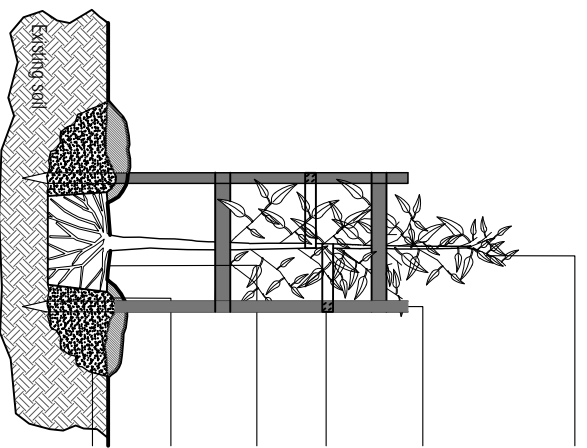
Excavate sloping shallow planting hole minimum 3 times the width of the rootball and break-up sides and base. Depth of planting hole no deeper than the height of the root ball. Backfill hole with site topsoil broken up to friable texture and firming progressively. Apply a suitable, slow-release fertiliser.

NOTES:

1. The location of services shall be confirmed prior to excavation.
2. Watering in of trees shall be completed on the same day as planting and be sufficient to consolidate the backfill around the roots.

TYPICAL TREE PLANTING DETAIL

NOT TO SCALE.



- All trees shall conform to the *AS 2303-2015 Tree Stock for Landscape Use*. In particular they shall:
- be healthy specimens free of pests, diseases, wounds or significant injury;
 - have good branching off a strong central leader and adequate crown density, symmetry and form;
 - have a stem taper that is self-supporting and an appropriate height and trunk caliper.
- Trees are to be well watered a maximum of 24 hours prior to planting.

- 4 No 70 x 65 x 1800/2400mm treated pine posts securely installed in ground to avoid damage to rootball. Posts to be 600mm long x 70 x 35mm treated pine. Tree guard to be vertical, square, level and a minimum of 1200mm above ground. Avoid damage to rootball and ensure no damage is caused to underground services. All timber painted with 2 coats black exterior stain.
- 2 No continuous ties wrapped around trunk at approximately 1.0m height and securely stapled to tree guard to allow some trunk movement.
- Top of rootball to be flush with finished level of the planting hole. The rootball should show no sign of suckering or girdling.

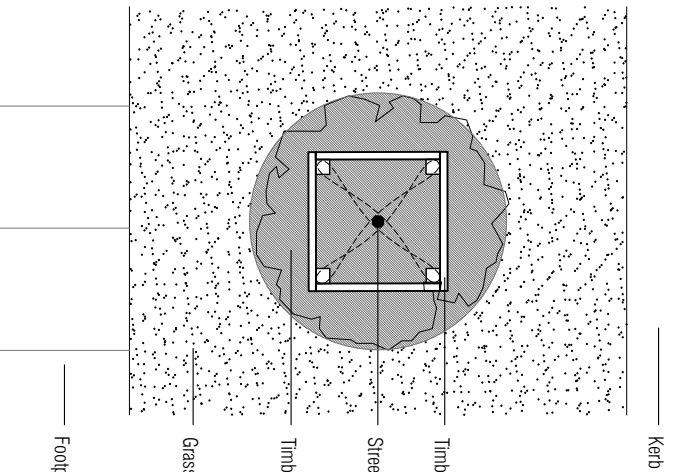
Raised 75mm high berm (ring of soil) to form a watering basin and direct water into rootball. Berm shall begin at root ball periphery. 75mm depth approved hardwood mulch to be kept clear of trunk, and spread a minimum of 1200mm diameter from the centre of the tree to ensure planting hole is covered.

Excavate sloping shallow planting hole minimum 3 times the width of the rootball and break-up sides and base. Depth of planting hole no deeper than the height of the root ball. Backfill hole with site topsoil broken up to friable texture and firming progressively. Apply a suitable, slow-release fertiliser.

NOTES:

1. The location of services shall be confirmed prior to excavation.
2. Watering in of trees shall be completed on the same day as planting and be sufficient to consolidate the backfill around the roots.

Elevation View - Tree Guard Setout (nts).



- Kerb
- Timber tree guard as detailed above, set out at 90° to kerb.
- Street tree
- Timber mulch (diameter approximately 1.2m)
- Grass
- Footpath

Plan View - Tree Guard Setout (nts).

TYPICAL TREE PLANTING DETAIL - PEASNELL ROAD

NOT TO SCALE.

TP1	Town Planning Approval	AD	22.08.22
P2	Revisions re. Power and NBN plans	AD	30.05.22
P1	Preliminary Issue for Client Review	AD	11.05.22
APPROVAL ISSUE		NTS	Date
Planning Permit P/P/2020/177/A			

Notes

1. All dimensions to be checked on site before commencing work. All measurements are in metres, unless otherwise shown.
2. The locations of underground services and light poles are indicative only - refer to engineering drawings for design service offsets.
3. The location and depth of services shall be verified on site prior to the commencement of works. The Contractor shall be liable for any damage to services during the landscape works.
4. Standard Street Tree Details.
- Standard offset from the back of kerb is 1.2m unless otherwise shown.
- It is assumed that all Underground Cable in close proximity to the 'tree zone' * (6m diameter x 600mm depth) shall be within conduit or have cover slabs to provide a higher level of infrastructure protection. (*Refer 12.0 Distribution Construction Standard Underground Trenching G427.1 by Citypower and Powerco).
- Minimum setback of 2.5m to underground electrically cable joints / tees.
- Minimum setback of 2.0m to service assets including pits and conduit crossings.
- Minimum setback of 0.75m to domestic service tapping points and 2.0m to stormwater outlets.
- Minimum setback of 1.2m to footpath crossings and 3.0m to driveways where they are existing or known.
- Minimum setback of 3.0m to fire hydrants.
- Minimum setback of 4.0m to light poles.
5. Proposed Street Trees.
- Tree position in front of lots may change slightly due to actual location of services, and constructed driveway crossings.
- Setback from intersection (kerb) shall be a minimum of 1.0m.
- In accordance with City of Ballarat Landscape Design Manual (LDM).
- Following City of Ballarat approval of these landscape plans any variation to the number or species of street trees requires approval by City of Ballarat.
- Planting All trees, shrubs and groundcovers shall be planted in accordance with LDM, unless otherwise specified.
- 7. Mulch. Mulch shall be recycled hardwood (or similar approved) in general accordance with LDM, unless otherwise specified.
- 8. Grass Seeding. Reseed nature strips and other grassed areas where there has been disturbance due to landscape works with a proprietary grass seed mix in accordance with the LDM.
- 9. Refer to drawing L01 for Plant Schedule.



Client / Project

Intega
Stage 4E
Lucas Grange, Ballarat

Drawing Title

Tree Planting Details

Date	Approved	Date	Issue
AD	RH	22.08.2022	AD
Scale (A3)		Sheet	
NTS	NTS	5 OF 5	

This drawing and design is provided by copyright © PLOT Landscape Architects Pty Ltd.

1529-105 TP1

This plan is provided for marketing and information purposes only. It shows design levels only which may change during construction. Builders should check all information prior to the building process. Where discrepancies exist between the plan of subdivision and this plan, the plan of subdivision shall be taken as correct. It is the responsibility of the prospective purchaser to confirm prior to purchase, all lot levels, fit depth and all service locations are correct.