

Contents.

Drawing

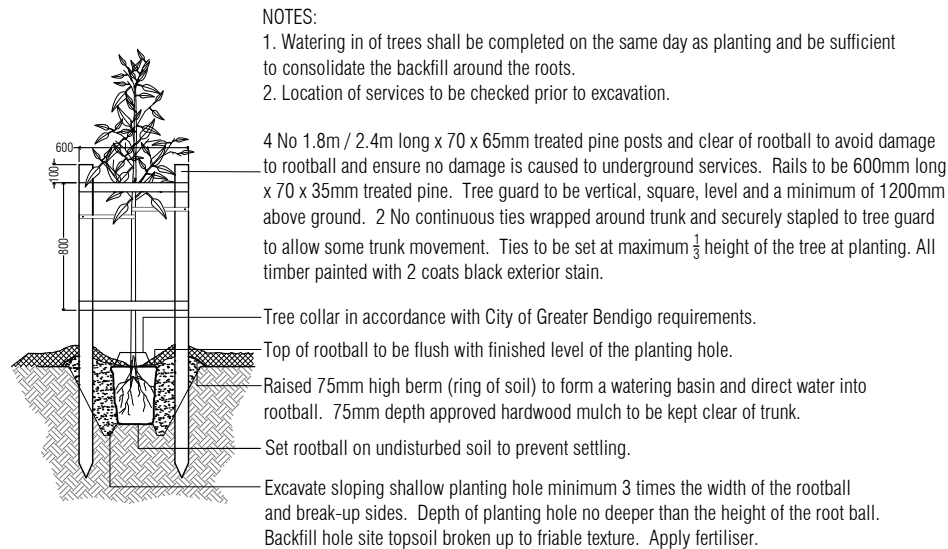
- PLA537-L01 Contents, Context Plan and Plant Schedule
- PLA537-L02 Street Landscape Plan 1
- PLA537-L03 Street Landscape Plan 2

Plant Schedule.

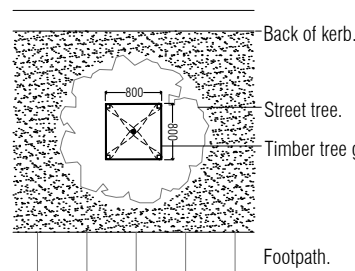
Street Trees

Code	Botanical Name	Common Name	Planting Size	Quantity
BPJ	Brachychiton populneus x acuminatus 'Jemderese Red'	Jemderese Red Brachychiton	45 ltr container, min. 2.2m high	18
UPB	Ulmus parvifolia 'Burnley Select'	Burnley Select Chinese Elm	45 ltr container, min. 2.2m high	11

Typical Advanced Tree Planting Detail



Tree Planting Detail (nts).



Tree Guard Setout (nts).

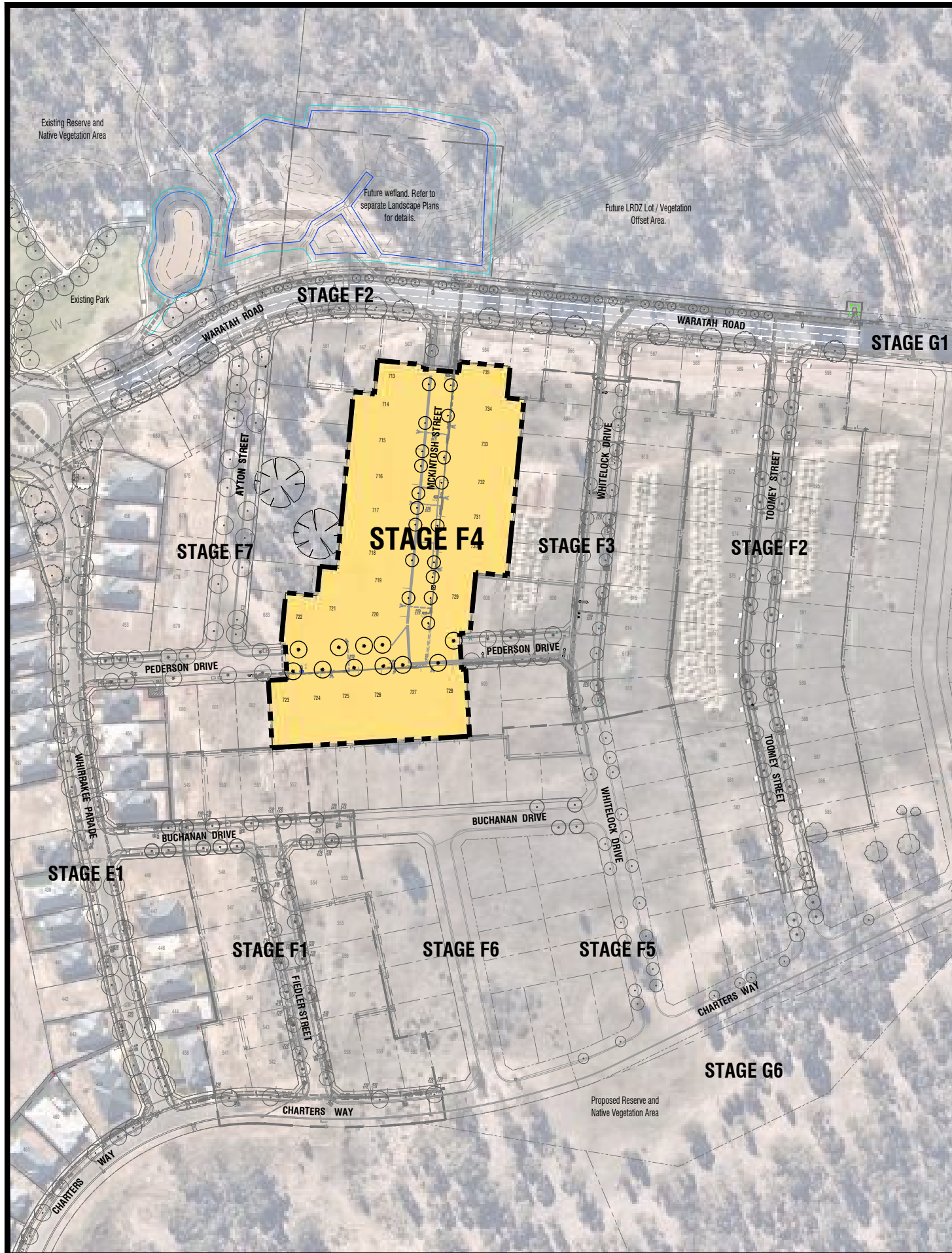
GREATER BENDIGO CITY COUNCIL

LANDSCAPE PLANS APPROVED

PLAN REFERRED TO IN PLANNING PERMIT NO: DS/903/2020

Delegated Officer: Jane Marriott

Date: 19 January 2023



Stage F4, Viewpoint - Context Plan (nts).

TP1	Town Planning Approval	AD	13.01.23
P2	Revisions re: Power and NBN plans	AD	18.10.22
P1	Preliminary Issue for Client Review	AD	22.09.22
Revision	Description	Initials	Date

APPROVAL ISSUE

Notes

PLANNING PERMIT NUMBER - DS/903/2020

- All dimensions to be checked on site before commencing work. All measurements are in metres, unless otherwise shown.
- The locations of underground services and light poles are indicative only - refer to electrical plans for electrical and service offsets.
- The location and depth of services shall be verified on site prior to the commencement of works. The Contractor shall be liable for any damage to services during the landscape works.
- Standard Street Tree Offsets.
 - It is assumed that all Underground Cable in close proximity to the 'tree zone' * (5m diameter x 600mm depth) shall be within conduits or have cover slabs to provide a higher level of infrastructure protection. (*Refer 12.0 'Distribution Construction Standard Underground Trenching GA211' by Citypower and Powercor).
 - 2.5m from underground electrical cable joints and tees.
 - Minimum setback of 2.0m to service assets including pits and conduit crossings.
 - Minimum setback of 1.0m to domestic service tapping points and 2.0m to stormwater outlets.
 - Minimum setback of 1.5m to footpath crossings and 3.0m to driveways where they are existing or known.
 - Minimum setback of 3.0m to fire hydrants.
 - Minimum setback of 4.0m to light poles.
- Proposed Street Trees.
 - Where possible, trees are planted to allow a driveway within 7.0m from the Title Boundary.
 - Tree position in front of lots may change slightly due to 'actual' location of services, and constructed driveway crossings.
 - Setback from intersection (kerb) shall be a minimum of 10m (at residential intersections of 50km/h) in accordance Landscape Design Guidelines for Subdivisions (LDG).
 - Following City of Greater Bendigo approval of these landscape plans any variation to the number or species of street trees requires approval by CoGB representative.
- Existing Trees and Vegetation. The Contractor shall confirm and protect any existing vegetation during landscape works in accordance with the Planning Permit, DWELP and Council requirements and any other agreements.
- Planting. All trees, shrubs and groundcovers shall be planted in accordance with the LDG, unless otherwise specified.
- Mulch. Mulch shall be recycled hardwood (or similar approved) in general accordance with the LDG unless otherwise specified.
- Grass Seeding. Re-seed nature strips and other grassed areas where there has been disturbance due to landscape works with a proprietary grass seed mix in accordance with the LDG, unless otherwise specified.



Client / Project

Integra

Viewpoint - Stage F4
Huntly, Bendigo

Drawing Title

Contents, Context Plan and Plant Schedule

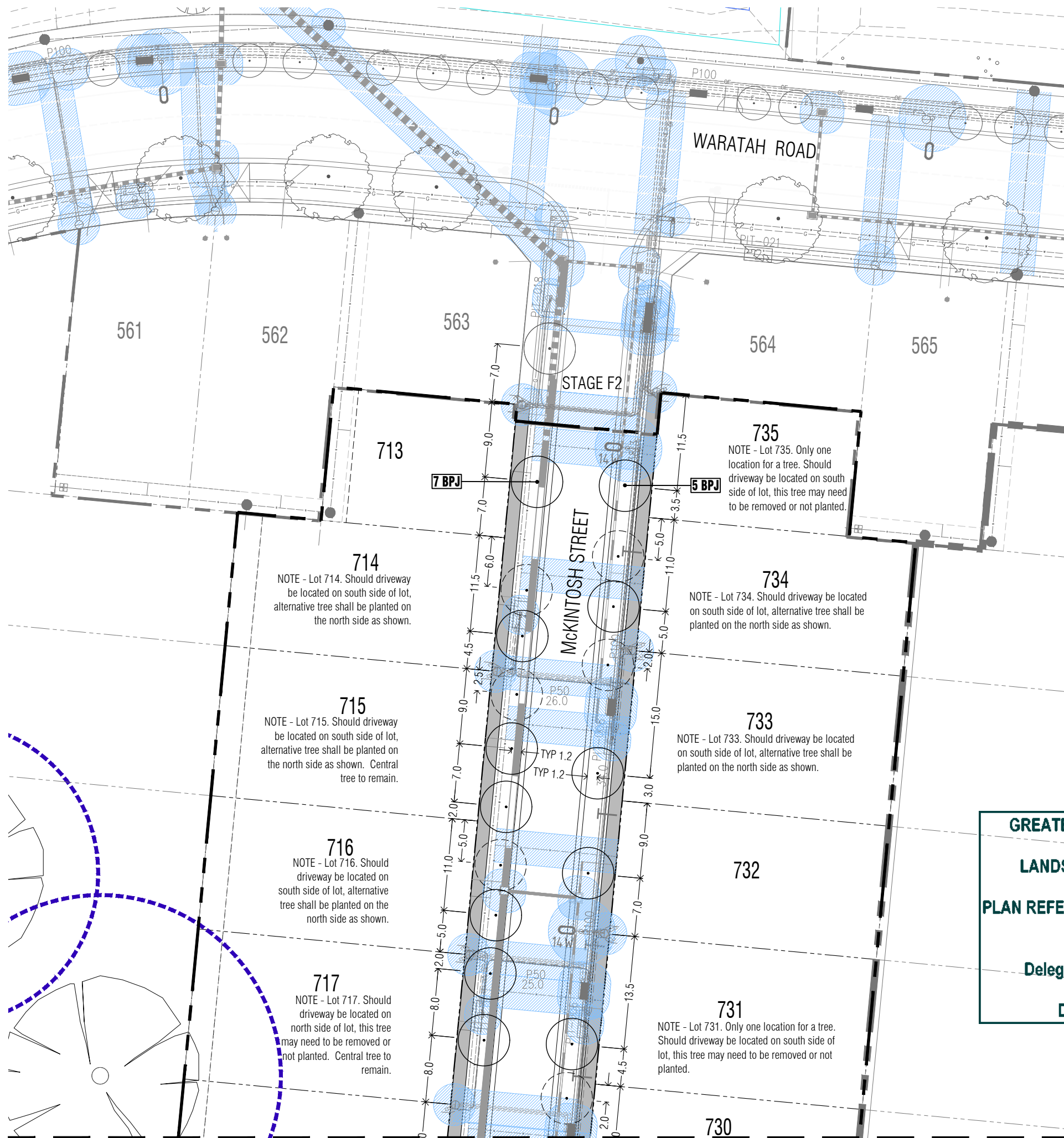
Drawn	Approved	Date	North
AD	RH	13.01.2023	
Scale (A1)	Scale (A3)	Sheet	
NTS	NTS	1 of 3	

Drawing Number

PLA537-L01

Revision

TP1



TP1	Town Planning Approval	AD	13.01.23
P2	Revisions re: Power and NBN plans	AD	18.10.22
P1	Preliminary Issue for Client Review	AD	22.09.22
Revision	Description	Initials	Date
Status	APPROVAL ISSUE		

- Notes**
- PLANNING PERMIT NUMBER - DS/903/2020
- All dimensions to be checked on site before commencing work. All measurements are in metres, unless otherwise shown.
 - The locations of underground services and light poles are indicative only - refer to electrical plans for electrical and service offsets.
 - The location and depth of services shall be verified on site prior to the commencement of works. The Contractor shall be liable for any damage to services during the landscape works.
 - Standard Street Tree Offsets.
 - It is assumed that all Underground Cable in close proximity to the 'tree zone' * (5m diameter x 600mm depth) shall be within conduits or have cover slabs to provide a higher level of infrastructure protection. (*Refer 12.0 'Distribution Construction Standard Underground Trenching GA211' by Citypower and Powercor).
 - 2.5m from underground electrical cable joints and tees.
 - Minimum setback of 2.0m to service assets including pits and conduit crossings.
 - Minimum setback of 1.0m to domestic service tapping points and 2.0m to stormwater outlets.
 - Minimum setback of 1.5m to footpath crossings and 3.0m to driveways where they are existing or known.
 - Minimum setback of 3.0m to fire hydrants.
 - Minimum setback of 4.0m to light poles.
 - Proposed Street Trees.
 - Where possible, trees are planted to allow a driveway within 7.0m from the Title Boundary.
 - Tree position in front of lots may change slightly due to 'actual' location of services, and constructed driveway crossings.
 - Setback from intersection (kerb) shall be a minimum of 10m (at residential intersections of 50km/h) in accordance Landscape Design Guidelines for Subdivisions (LDG).
 - Following City of Greater Bendigo approval of these landscape plans any variation to the number or species of street trees requires approval by CoGB representative.
 - Existing Trees and Vegetation. The Contractor shall confirm and protect any existing vegetation during landscape works in accordance with the Planning Permit, DWELP and Council requirements and any other agreements.
 - Planting. All trees, shrubs and groundcovers shall be planted in accordance with the LDG, unless otherwise specified.
 - Mulch. Mulch shall be recycled hardwood (or similar approved) in general accordance with the LDG unless otherwise specified.
 - Grass Seeding. Re-seed nature strips and other grassed areas where there has been disturbance due to landscape works with a proprietary grass seed mix in accordance with the LDG, unless otherwise specified.
 - Refer to L01 for Plant Schedule and Tree Planting Detail.

- Legend**
- Existing trees planted as part of an adjoining stage.
 - Existing trees to be retained and protected in accordance with CoGB Tree Protection requirements.
 - Proposed Street Trees (*Brachychiton populneus x aceritilius* 'Jerilderie Red') [BPJ]
 - Alternative tree location if driveway is located where street tree is proposed.
 - Service offsets / setbacks
 - Plant Label and Code

GREATER BENDIGO CITY COUNCIL

LANDSCAPE PLANS APPROVED

PLAN REFERRED TO IN PLANNING PERMIT NO: DS/903/2020

Delegated Officer: Jane Marriott

Date: 19 January 2023



Client / Project

Integra

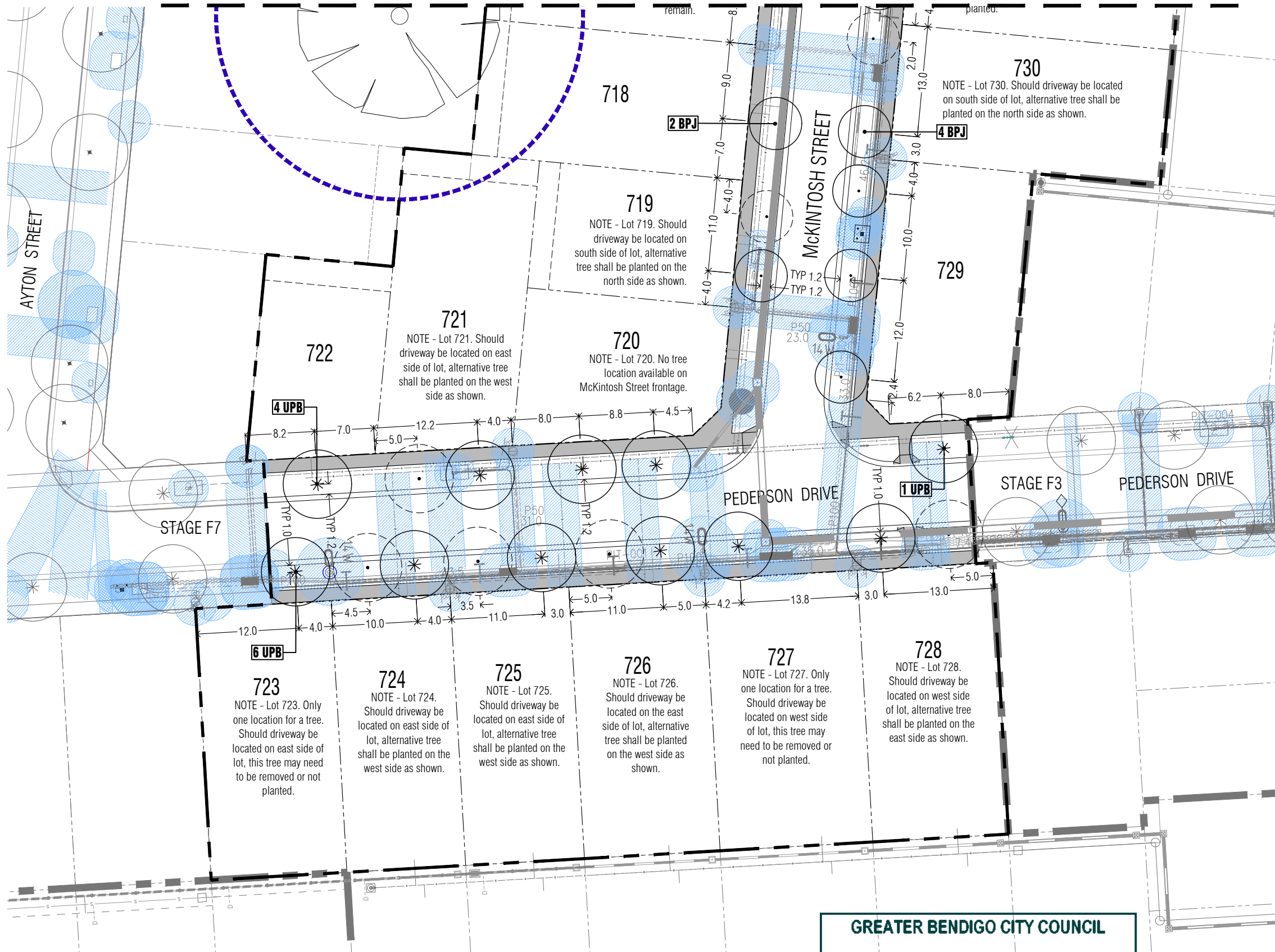
Viewpoint - Stage F4
Huntly, Bendigo

Street Landscape Plan 1			
Drawn	Approved	Date	North
AD	RH	13.01.2023	
Scale (A1)	Scale (A3)	Sheet	
1:250	1:500	2 of 3	
This drawing and design is protected by copyright © PLOT Landscape Architects Pty Ltd. www.plota.com.au			
Drawing Number	Revision		

PLA537-L02 **TP1**

Continued on L03

Continued on L02



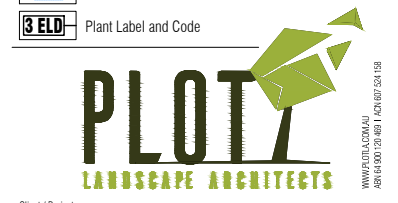
TP1	Town Planning Approval	AD	13.01.23
P2	Revisions re: Power and NBN plans	AD	18.10.22
P1	Preliminary Issue for Client Review	AD	22.09.22
Revision	Description	Initials	Date
			APPROVAL ISSUE

Notes
 PLANNING PERMIT NUMBER - DS/903/2020

- All dimensions to be checked on site before commencing work. All measurements are in metres, unless otherwise shown.
- The locations of underground services and light poles are indicative only - refer to electrical plans for electrical and service offsets.
- The location and depth of services shall be verified on site prior to the commencement of works. The Contractor shall be liable for any damage to services during the landscape works.
- Standard Street Tree Offsets.
 - It is assumed that all Underground Cable in close proximity to the 'tree zone' (5m diameter x 600mm depth) shall be within conduits or have cover slabs to provide a higher level of infrastructure protection. (*Refer 12.0 'Distribution Construction Standard Underground Trenching GA211' by Citypower and Powercor).
 - 2.5m from underground electrical cable joints and tees.
 - Minimum setback of 2.0m to service assets including pits and conduit crossings.
 - Minimum setback of 1.0m to domestic service tapping points and 2.0m to stormwater outlets.
 - Minimum setback of 1.5m to footpath crossings and 3.0m to driveways where they are existing or known.
 - Minimum setback of 3.0m to fire hydrants.
 - Minimum setback of 4.0m to light poles.
- Proposed Street Trees.
 - Where possible, trees are planted to allow a driveway within 7.0m from the Title Boundary.
 - Tree position in front of lots may change slightly due to 'actual' location of services, and constructed driveway crossings.
 - Setback from intersection (kerb) shall be a minimum of 10m (at residential intersections of 50km/h) in accordance Landscape Design Guidelines for Subdivisions (LDG).
 - Following City of Greater Bendigo approval of these landscape plans any variation to the number or species of street trees requires approval by CoGB representative.
- Existing Trees and Vegetation. The Contractor shall confirm and protect any existing vegetation during landscape works in accordance with the Planning Permit, DWELP and Council requirements and any other agreements.
- Planting. All trees, shrubs and groundcovers shall be planted in accordance with the LDG, unless otherwise specified.
- Mulch. Mulch shall be recycled hardwood (or similar approved) in general accordance with the LDG unless otherwise specified.
- Grass Seeding. Reseed nature strips and other grassed areas where there has been disturbance due to landscape works with a proprietary grass seed mix in accordance with the LDG, unless otherwise specified.
- Refer to L01 for Plant Schedule and Tree Planting Detail.

- Legend**
- Existing trees planted as part of an adjoining stage.
 - Existing trees to be retained and protected in accordance with CoGB Tree Protection requirements.
 - Proposed Street Trees (*Brachychiton populneus x acerifolius* 'Jerrilderee Red') [BPJ]
 - Proposed Street Trees (*Ulmus parvifolia* 'Burnley Select') [UPB]
 - Alternative tree location if driveway is located where street tree is proposed.
 - Service offsets / setbacks
 - Plant Label and Code

GREATER BENDIGO CITY COUNCIL
LANDSCAPE PLANS APPROVED
PLAN REFERRED TO IN PLANNING PERMIT
NO: DS/903/2020
Delegated Officer: Jane Marriott
Date: 19 January 2023



Client / Project
Integra
 Viewpoint - Stage F4
 Huntly, Bendigo

Street Landscape Plan 2			
Drawn	Approved	Date	North
AD	RH	13.01.2023	
Scale (A1)	Scale (A3)	Sheet	
1:250	1:500	3 of 3	
Drawing Number			Revision
PLA537-L03			TP1

This drawing and design is protected by copyright © PLOT Landscape Architects Pty Ltd. www.plota.com.au