

Contents.

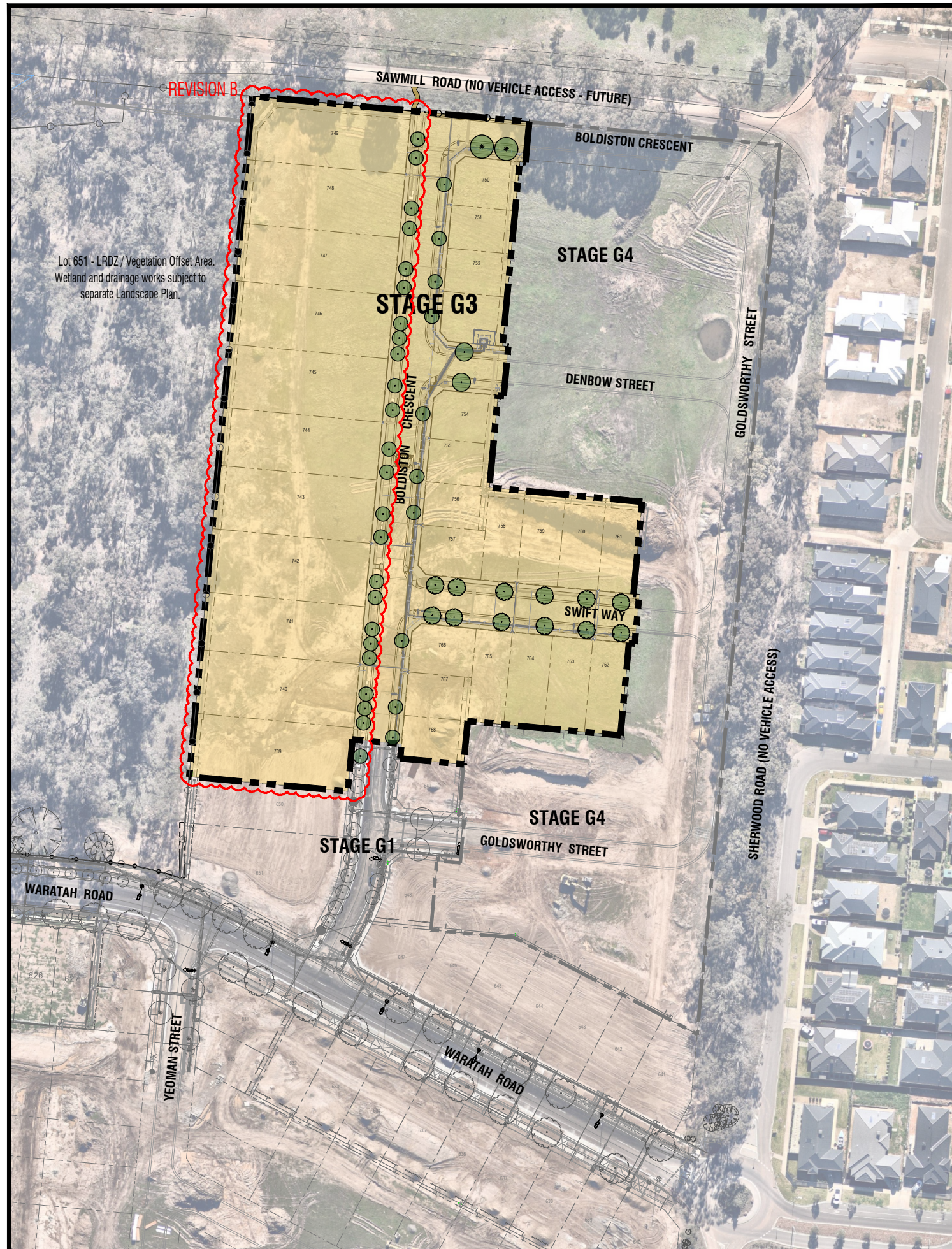
Drawing

- PLA544-L01 Contents, Context Plan and Plant Schedule
- PLA544-L02 Street Landscape Plan 1
- PLA544-L03 Street Landscape Plan 2
- PLA544-L04 Tree Planting Detail

Plant Schedule.

Street Trees

Code	Botanical Name	Common Name	Planting Size	Quantity
ACE	<i>Acer campestre</i> 'Elsrijk'	Elsrijk Hedge Maple	45 ltr container, min. 2.2m high	12
AFL	<i>Agonis flexuosa</i>	Willow Myrtle	45 ltr container, min. 2.2m high	34
ELC	<i>Eucalyptus leucoxylon subsp. connata</i>	Yellow Gum	45 ltr container, min. 2.2m high	2
PCH	<i>Pistacia chinensis</i>	Chinese Pistacio	45 ltr container, min. 2.2m high	2



Stage G3, Viewpoint - Context Plan (nts).

Revision	Description	Initials	Date
B	Revisions re: NBN plan	AD	14.03.24
A	Lots 739 to 749 - layout revisions	AD	04.03.24
TP1	Town Planning Approval	AD	06.10.23
P2	Revisions re: NBN plans & CoGB review	AD	03.11.22
P1	Preliminary Issue for Client Review	AD	17.10.22

PRELIMINARY ISSUE

Notes

- PLANNING PERMIT NUMBER - DS/903/2020
- All dimensions to be checked on site before commencing work. All measurements are in metres, unless otherwise shown.
 - The locations of underground services and light poles are indicative only - refer to electrical plans for electrical and service offsets.
 - The location and depth of services shall be verified on site prior to the commencement of works. The Contractor shall be liable for any damage to services during the landscape works.
 - Standard Street Tree Offsets.
 - It is assumed that all Underground Cable in close proximity to the 'tree zone' * (5m diameter x 600mm depth) shall be within conduits or have cover slabs to provide a higher level of infrastructure protection. (*Refer 12.0 Distribution Construction Standard Underground Trenching GA211* by Citypower and Powercor).
 - 2.5m from underground electrical cable joints and tees.
 - Minimum setback of 2.0m to service assets including pits and conduit crossings.
 - Minimum setback of 1.0m to domestic service tapping points and 2.0m to stormwater outlets.
 - Minimum setback of 1.5m to footpath crossings and 3.0m to driveways where they are existing or known.
 - Minimum setback of 3.0m to fire hydrants.
 - Minimum setback of 4.0m to light poles.
 - Proposed Street Trees.
 - Where possible, trees are planted to allow a driveway within 7.0m from the Title Boundary.
 - Tree position in front of lots may change slightly due to 'actual' location of services, and constructed driveway crossings.
 - Setback from intersection (kerb) shall be a minimum of 10m (at residential intersections of 50km/h) in accordance Landscape Design Guidelines for Subdivisions (LDG)
 - Following City of Greater Bendigo approval of these landscape plans any variation to the number or species of street trees requires approval by CoGB representative.
 - Existing Trees and Vegetation. The Contractor shall confirm and protect any existing vegetation during landscape works in accordance with the Planning Permit, DWELP and Council requirements and any other agreements.
 - Planting. All trees, shrubs and groundcovers shall be planted in accordance with the LDGS, unless otherwise specified.
 - Mulch. Mulch shall be recycled hardwood (or similar approved) in general accordance with the LDG unless otherwise specified.
 - Grass Seeding. Reseed nature strips and other grassed areas where there has been disturbance due to landscape works with a proprietary grass seed mix in accordance with the LDG.



Client / Project

Intega

Viewpoint - Stage G3
Huntly, Bendigo

Drawing Title

Contents, Context Plan and Plant Schedule

Drawn	Approved	Date	North
AD	RH	14/03/2024	
Scale (A1)	Scale (A3)	Sheet	
NTS	NTS	1 of 4	

This drawing and design is protected by copyright © PLOT Landscapes Architects Pty Ltd. www.plota.com.au

Drawing Number

Revision

PLA544-L01 **B**

B	Revisions re: NBN plan	AD	14.03.24
A	Lots 739 to 749 - layout revisions	AD	04.03.24
TP1	Town Planning Approval	AD	06.10.23
P2	Revisions re: NBN plans & CoGB review	AD	03.11.22
P1	Preliminary Issue for Client Review	AD	17.10.22
Revision	Description	Initials	Date
			PRELIMINARY ISSUE

Notes
PLANNING PERMIT NUMBER - DS/903/2020

- All dimensions to be checked on site before commencing work. All measurements are in metres, unless otherwise shown.
- The locations of underground services and light poles are indicative only - refer to electrical plans for electrical and service offsets.
- The location and depth of services shall be verified on site prior to the commencement of works. The Contractor shall be liable for any damage to services during the landscape works.
- Standard Street Tree Offsets.
 - It is assumed that all Underground Cable in close proximity to the 'tree zone' * (5m diameter x 600mm depth) shall be within conduits or have cover slabs to provide a higher level of infrastructure protection. (*Refer 12.0 'Distribution Construction Standard Underground Trenching GA211' by Citypower and Powercor).
 - 2.5m from underground electrical cable joints and tees.
 - Minimum setback of 2.0m to service assets including pits and conduit crossings.
 - Minimum setback of 1.0m to domestic service tapping points and 2.0m to stormwater outlets.
 - Minimum setback of 1.5m to footpath crossings and 3.0m to driveways where they are existing or known.
 - Minimum setback of 3.0m to fire hydrants.
 - Minimum setback of 4.0m to light poles.
- Proposed Street Trees.
 - Where possible, trees are planted to allow a driveway within 7.0m from the Title Boundary.
 - Tree position in front of lots may change slightly due to 'actual' location of services, and constructed driveway crossings.
 - Setback from intersection (kerb) shall be a minimum of 10m (at residential intersections of 50km/h) in accordance Landscape Design Guidelines for Subdivisions (LDG)
 - Following City of Greater Bendigo approval of these landscape plans any variation to the number or species of street trees requires approval by CoGB representative.
- Existing Trees and Vegetation. The Contractor shall confirm and protect any existing vegetation during landscape works in accordance with the Planning Permit, DWELP and Council requirements and any other agreements.
- Planting. All trees, shrubs and groundcovers shall be planted in accordance with the LDGS, unless otherwise specified.
- Mulch. Mulch shall be recycled hardwood (or similar approved) in general accordance with the LDG unless otherwise specified.
- Grass Seeding. Reseed nature strips and other grassed areas where there has been disturbance due to landscape works with a proprietary grass seed mix in accordance with the LDG.
- Refer to drawing L01 for Plant Schedule.

Legend

	Existing trees planted as part of another stage.
	Proposed Street Trees (<i>Acer campestre</i> 'Elsrijk') [ACE]
	Proposed Street Trees (<i>Agonis flexuosa</i>) [AFL]
	Alternative tree location if driveway is located where street tree is proposed.
	Service offsets / setbacks
	Plant Label and Code



PRELIMINARY

Client / Project
Intega
 Viewpoint - Stage G3
 Huntly, Bendigo

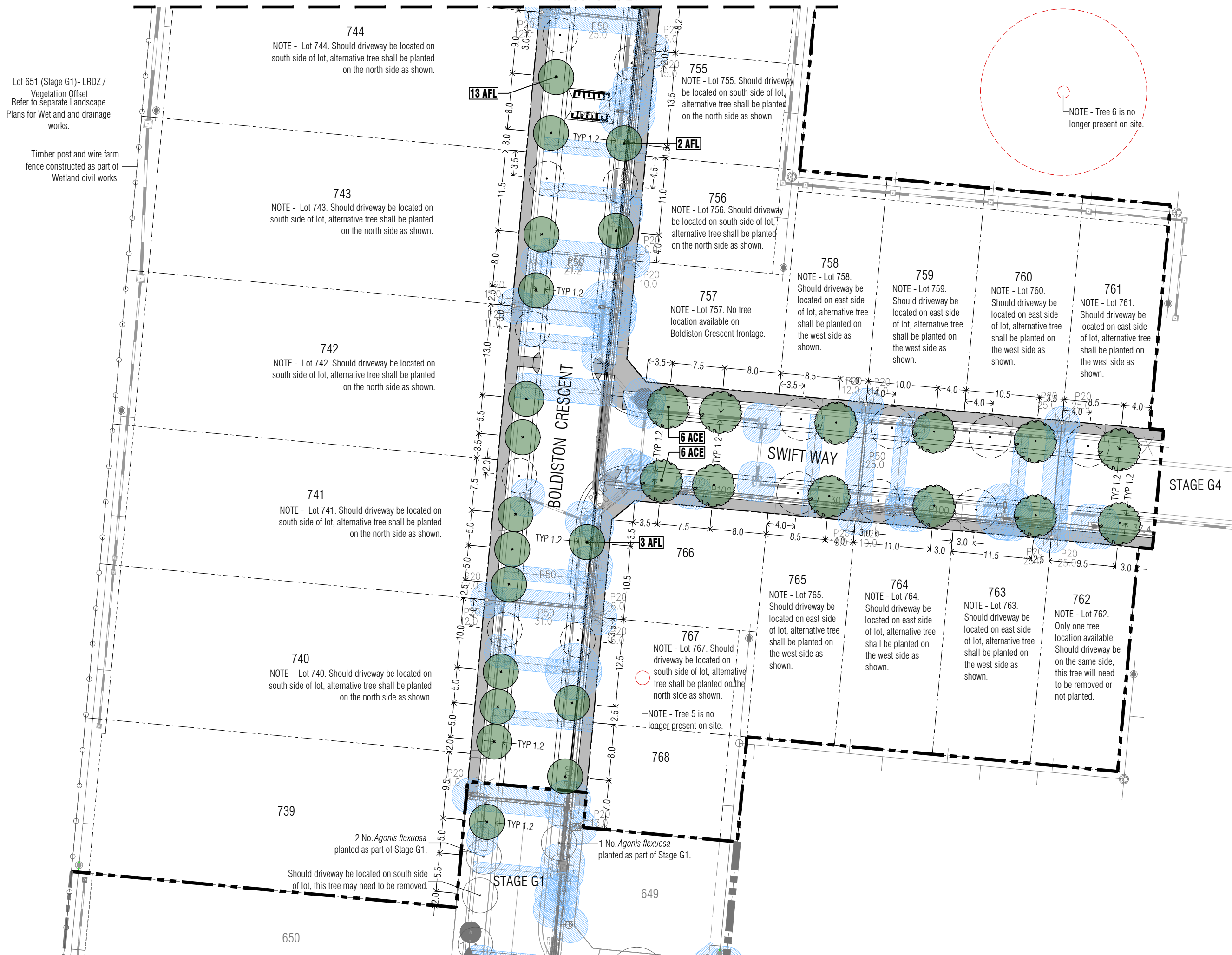
Drawing Title
Street Landscape Plan 1

Drawn	Approved	Date	North
AD	RH	14/03/2024	
Scale (A1)	Scale (A3)	Sheet	
1:250	1:500	2 of 4	

This drawing and design is protected by copyright © PLOT Landscape Architects Pty Ltd. www.plota.com.au

Drawing Number
PLA544-L02 Revision
B

Continued on L03



Lot 651 (Stage G1)- LRDZ / Vegetation Offset Refer to separate Landscape Plans for Wetland and drainage works.

Timber post and wire farm fence constructed as part of Wetland civil works.

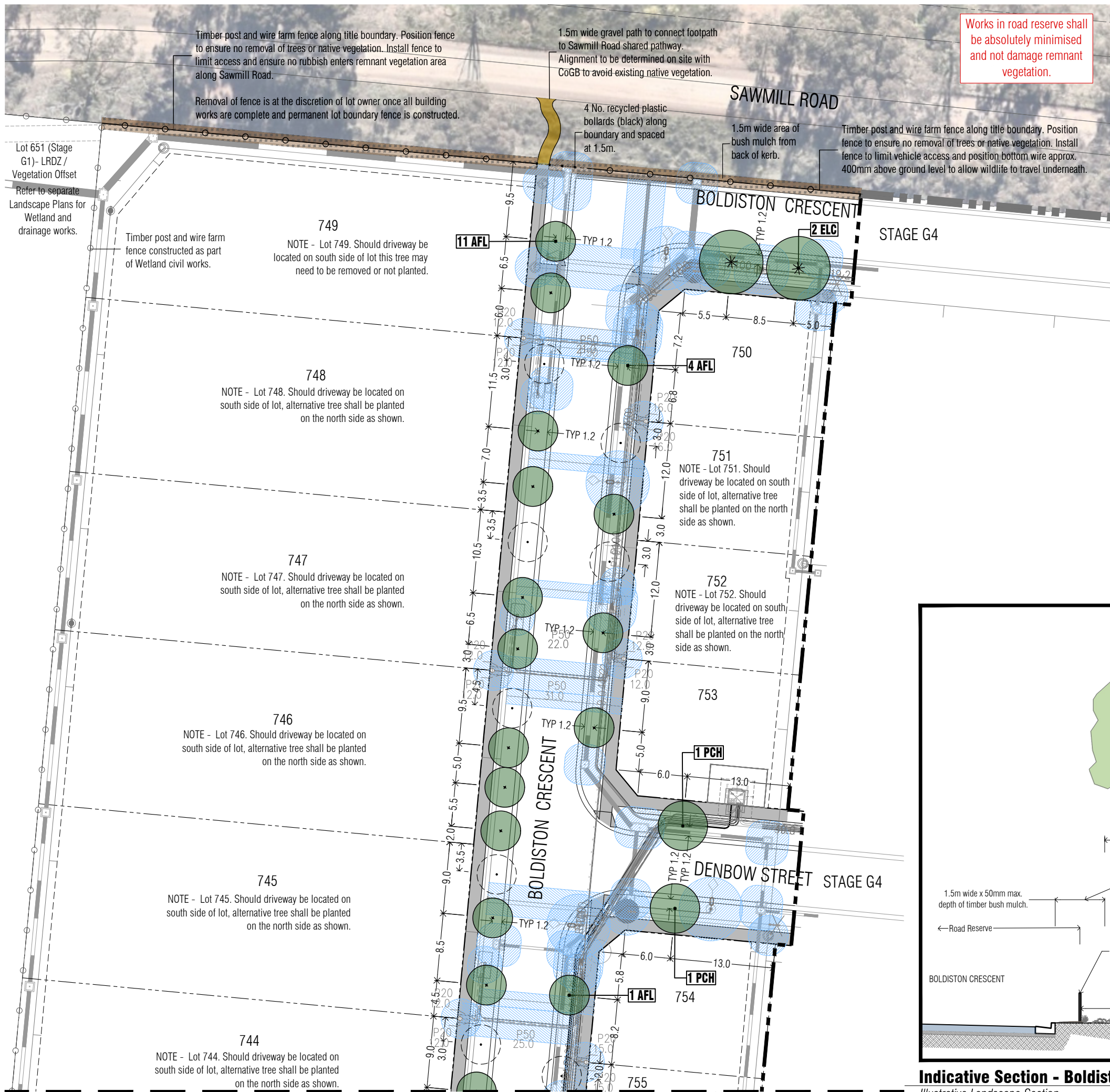
STAGE G4

BOLDISTON CRESCENT

SWIFT WAY

STAGE G1

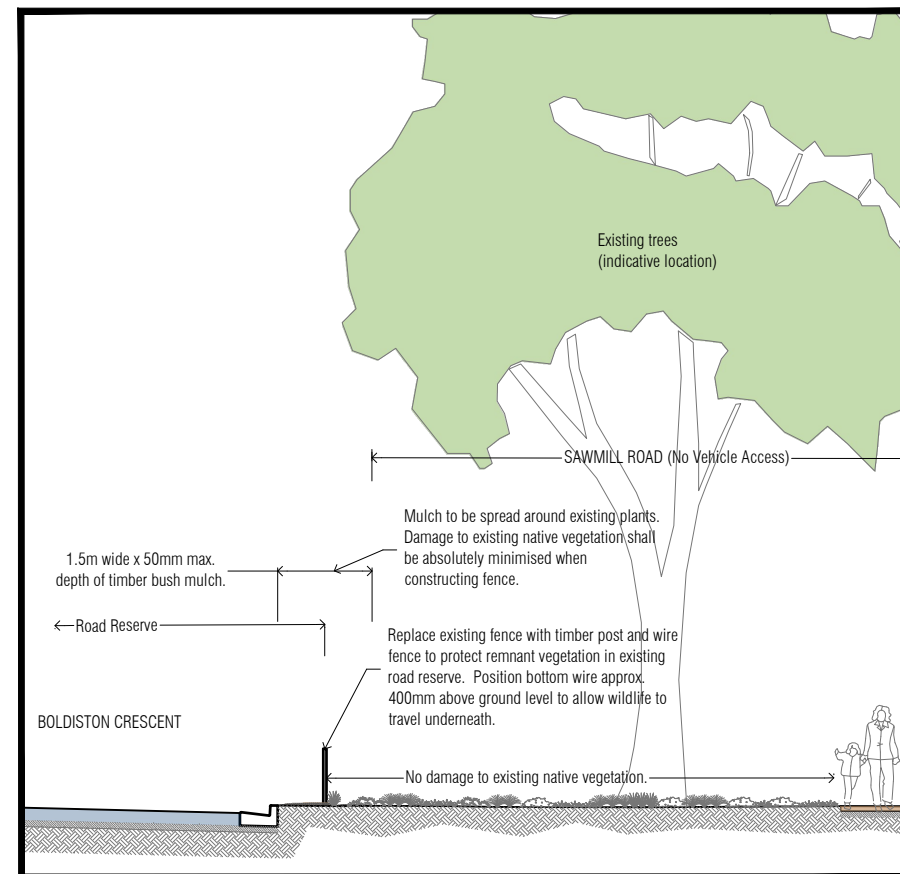
649



Works in road reserve shall be absolutely minimised and not damage remnant vegetation.



Recycled plastic bollards to match existing along Sherwood Road and elsewhere in Viewpoint. Bollards to be set in minimum 1.5m wide strip of bush mulch to promote regeneration of existing native plant species. Concrete footing shall not be visible at surface. Bollards to be located along the title boundary and spaced at 1.5m apart.



Revision	Description	Initials	Date
B	Revisions re: NBN plan	AD	14.03.24
A	Lots 739 to 749 - layout revisions	AD	04.03.24
TP1	Town Planning Approval	AD	06.10.23
P2	Revisions re: NBN plans & CoGB review	AD	03.11.22
P1	Preliminary Issue for Client Review	AD	17.10.22

Status: **PRELIMINARY ISSUE**

Notes
PLANNING PERMIT NUMBER - DS/903/2020

- All dimensions to be checked on site before commencing work. All measurements are in metres, unless otherwise shown.
- The locations of underground services and light poles are indicative only - refer to electrical plans for electrical and service offsets.
- The location and depth of services shall be verified on site prior to the commencement of works. The Contractor shall be liable for any damage to services during the landscape works.
- Standard Street Tree Offsets.
 - It is assumed that all Underground Cable in close proximity to the 'tree zone' (5m diameter x 600mm depth) shall be within conduits or have cover slabs to provide a higher level of infrastructure protection. (*Refer 12.0 'Distribution Construction Standard Underground Trenching GA211' by Citypower and Powercor).
 - 2.5m from underground electrical cable joints and tees.
 - Minimum setback of 2.0m to service assets including pits and conduit crossings.
 - Minimum setback of 1.0m to domestic service tapping points and 2.0m to stormwater outlets.
 - Minimum setback of 1.5m to footpath crossings and 3.0m to driveways where they are existing or known.
 - Minimum setback of 3.0m to fire hydrants.
 - Minimum setback of 4.0m to light poles.
- Proposed Street Trees.
 - Where possible, trees are planted to allow a driveway within 7.0m from the Title Boundary.
 - Tree position in front of lots may change slightly due to 'actual' location of services, and constructed driveway crossings.
 - Setback from intersection (kerb) shall be a minimum of 10m (at residential intersections of 50km/h) in accordance Landscape Design Guidelines for Subdivisions (LDG)
 - Following City of Greater Bendigo approval of these landscape plans any variation to the number or species of street trees requires approval by CoGB representative.
- Existing Trees and Vegetation. The Contractor shall confirm and protect any existing vegetation during landscape works in accordance with the Planning Permit, DWELP and Council requirements and any other agreements.
- Planting. All trees, shrubs and groundcovers shall be planted in accordance with the LDGS, unless otherwise specified.
- Mulch. Mulch shall be recycled hardwood (or similar approved) in general accordance with the LDG unless otherwise specified.
- Grass Seeding. Reseed nature strips and other grassed areas where there has been disturbance due to landscape works with a proprietary grass seed mix in accordance with the LDG.
- Refer to drawing L01 for Plant Schedule.

Legend

	Proposed Street Trees (<i>Agonis flexuosa</i>) [AFL]
	Proposed Street Trees (<i>Pistacia chinensis</i>) [PCH]
	Proposed Street Trees (<i>Eucalyptus leucoxylon</i> subsp. <i>connata</i>) [ELC]
	Alternative tree location if driveway is located where street tree is proposed.
	Service offsets / setbacks
	Plant Label and Code
	Timber post and wire farm style fence
	Bollards (recycled plastic)



Client / Project
Intega
Viewpoint - Stage G3
Huntly, Bendigo

Drawn	Approved	Date	North
AD	RH	14/03/2024	
Scale (A1)	Scale (A3)	Sheet	
1:250	1:500	3 of 4	

This drawing and design is protected by copyright © PLOT Landscape Architects Pty Ltd. www.plota.com.au

Drawing Number: **PLA544-L03** Revision: **B**

Continued on L02

NTS

B	Revisions re: NBN plan	AD	14.03.24
A	Lots 739 to 749 - layout revisions	AD	04.03.24
TP1	Town Planning Approval	AD	06.10.23
P2	Revisions re: NBN plans & CoGB review	AD	03.11.22
P1	Preliminary Issue for Client Review	AD	17.10.22
Revision	Description	Initials	Date

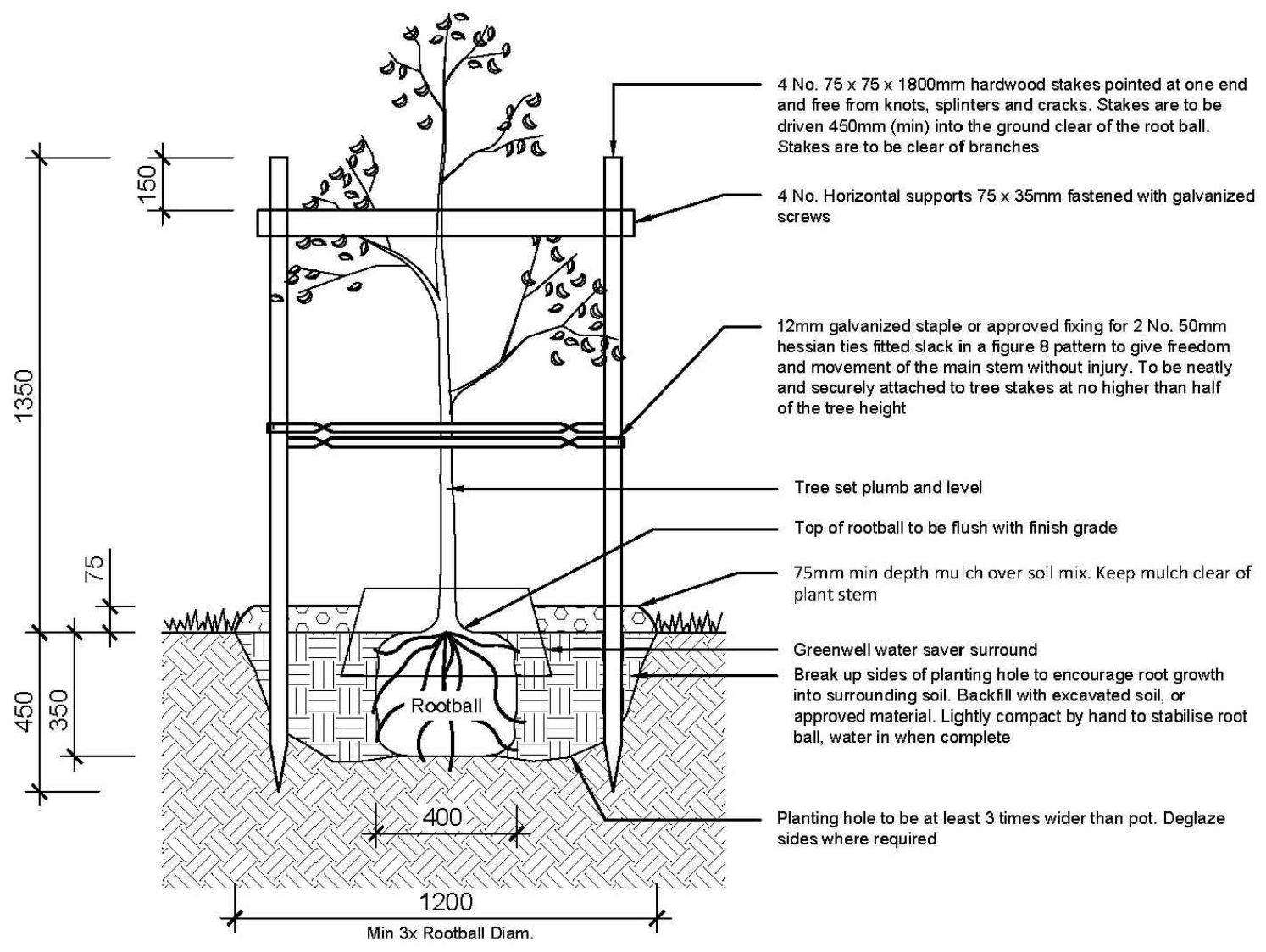
PRELIMINARY ISSUE

Notes

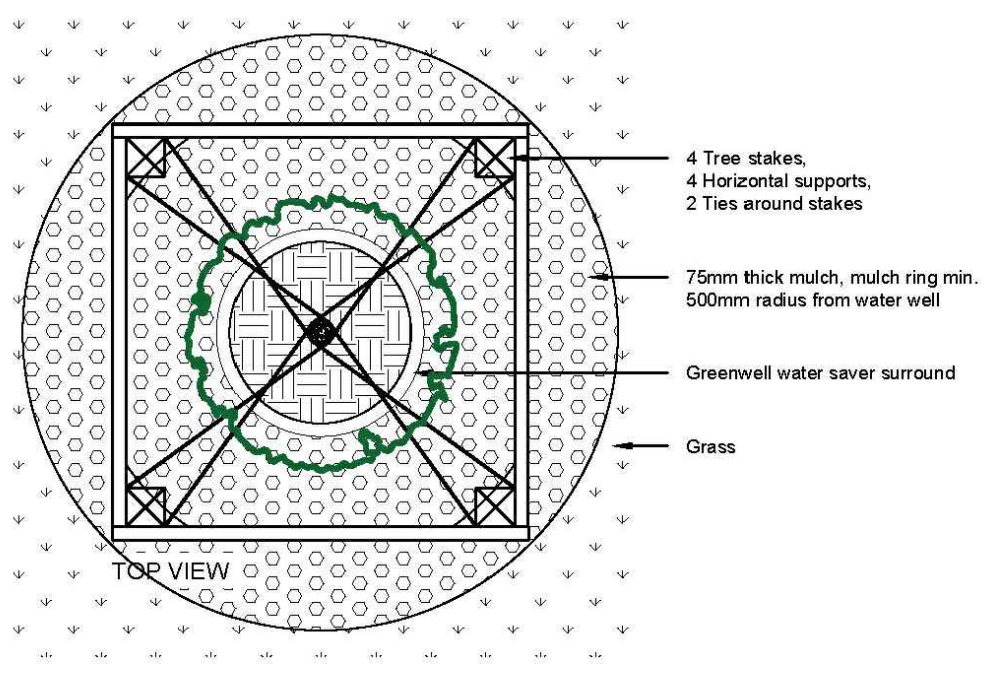
PLANNING PERMIT NUMBER - DS/903/2020

- All dimensions to be checked on site before commencing work. All measurements are in metres, unless otherwise shown.
- The locations of underground services and light poles are indicative only - refer to electrical plans for electrical and service offsets.
- The location and depth of services shall be verified on site prior to the commencement of works. The Contractor shall be liable for any damage to services during the landscape works.

NOTE:
Contractor is to undertake a Dial Before You Dig to secure all services prior to any excavation or other disturbance of the ground.



Tree Planting Detail - Elevation (nts).



Tree Guard - Plan View (nts).

TREE PLANTING NOTES:

- SUPPLY:** Tree stock to conform to AS 2303: 2018 Tree stock for landscape use.
- PLACEMENT AND INSTALLATION:** Trees are to be located as per the City of Greater Bendigo approved plan. Trees are to be root pruned and planted at a depth plumb and level with the existing site.
- MATERIALS:**
 - 45L/40cm Tree
 - Hardwood stakes (75mm x 75mm x 1800mm)
 - Horizontal supports (75 x 35mm)
 - Hessian tree tie: Jute webbing (50mm wide)
 - Galvanised staples (12mm)
 - Greenwell Water Saving Surround (black)
 - Mulch (as specified)
- MAINTENANCE:**
 - Maintenance period to be a minimum 24 months (as instructed by CoGB) and must include 2 full summers.
 - Must include regular irrigation, formative pruning and weeding.
 - Trees to be pruned in accordance with AS 4373-2007 Pruning of Amenity Trees.

City of Greater Bendigo Standard Tree Planting Detail - Subdivision Nature Strips (nts).

PLOT
LANDSCAPE ARCHITECTS
PRELIMINARY

Client / Project: **Intega**
Viewpoint - Stage G3
Huntly, Bendigo

Drawing Title: **Tree Planting Detail**

Drawn	Approved	Date
AD	RH	14/03/2024
Scale (A1)	Scale (A3)	Sheet
NA	NA	4 of 4

This drawing and design is protected by copyright © PLOT Landscape Architects Pty Ltd. www.plotla.com.au

Drawing Number: **PLA544-L04** Revision: **B**