

CONTENTS:

Drawing Number

PLA572-L01 Context, Plant Schedule and Tree Detail

PLA572-L02 Street Tree Plan 01

PLA572-L03 Street Tree Plan 02

PLA572-L04 Street Tree Plan 03

MASTER PLANT SCHEDULE

Code	Botanical Name	Common Name	Plant Size	Qty
Trees				
ANS	<i>Acer negundo</i> 'Sensation'	Sensation Box Elder	45 ltr container, min. 2.2m high	1
AFJ	<i>Acer freemanii</i> 'Jeffersred'	Autumn Blaze Maple	100 ltr container, min. 3m high	1
ACO	<i>Angophora costata</i>	Smooth-barked Apple	18-20 ltr container, min. 1.2m high	21
FPC	<i>Fraxinus pennsylvanica</i> 'Cimmzam'	Cimmaron Ash	45 ltr container, min. 2.2m high	8
UHS	<i>Ulmus</i> hybrid 'Sapporo Autumn Gold'	Sapporo Autumn Gold Elm	45 ltr container, min. 2.2m high	7

TP1	Town Planning Approval	AD	11.07.24
P5	Revisions re: powercor comments	AD	07.06.24
P4	Revisions re: Hutchinson Dve roundabout	AD	07.12.23
P3	Revisions re: NBN and Power plans	AD	09.10.23
P2	Revisions re: civil review	AD	08.09.23
P1	Preliminary Issue for Client Review	AD	06.09.23
Revision	Description	Initials	Date

APPROVAL ISSUE

Planning Permit PLP/2020/177/B

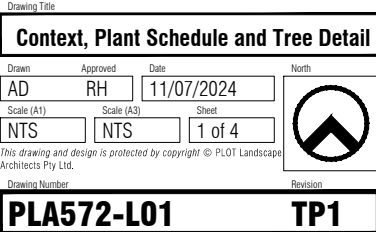
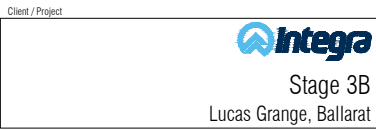
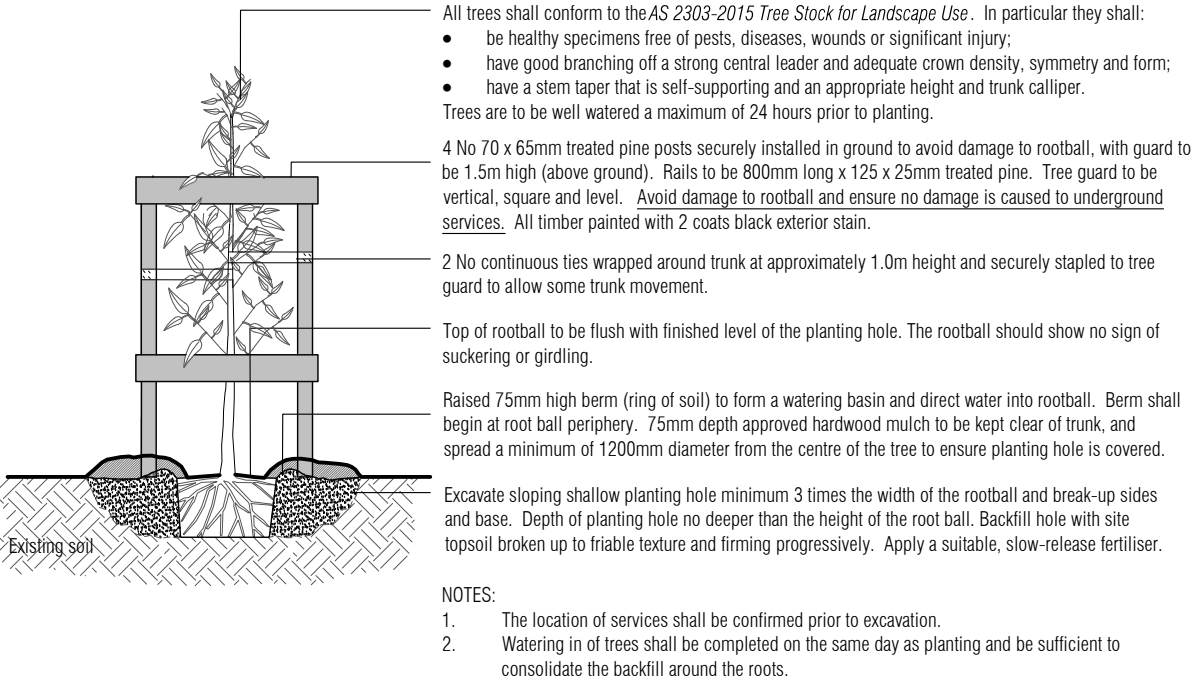
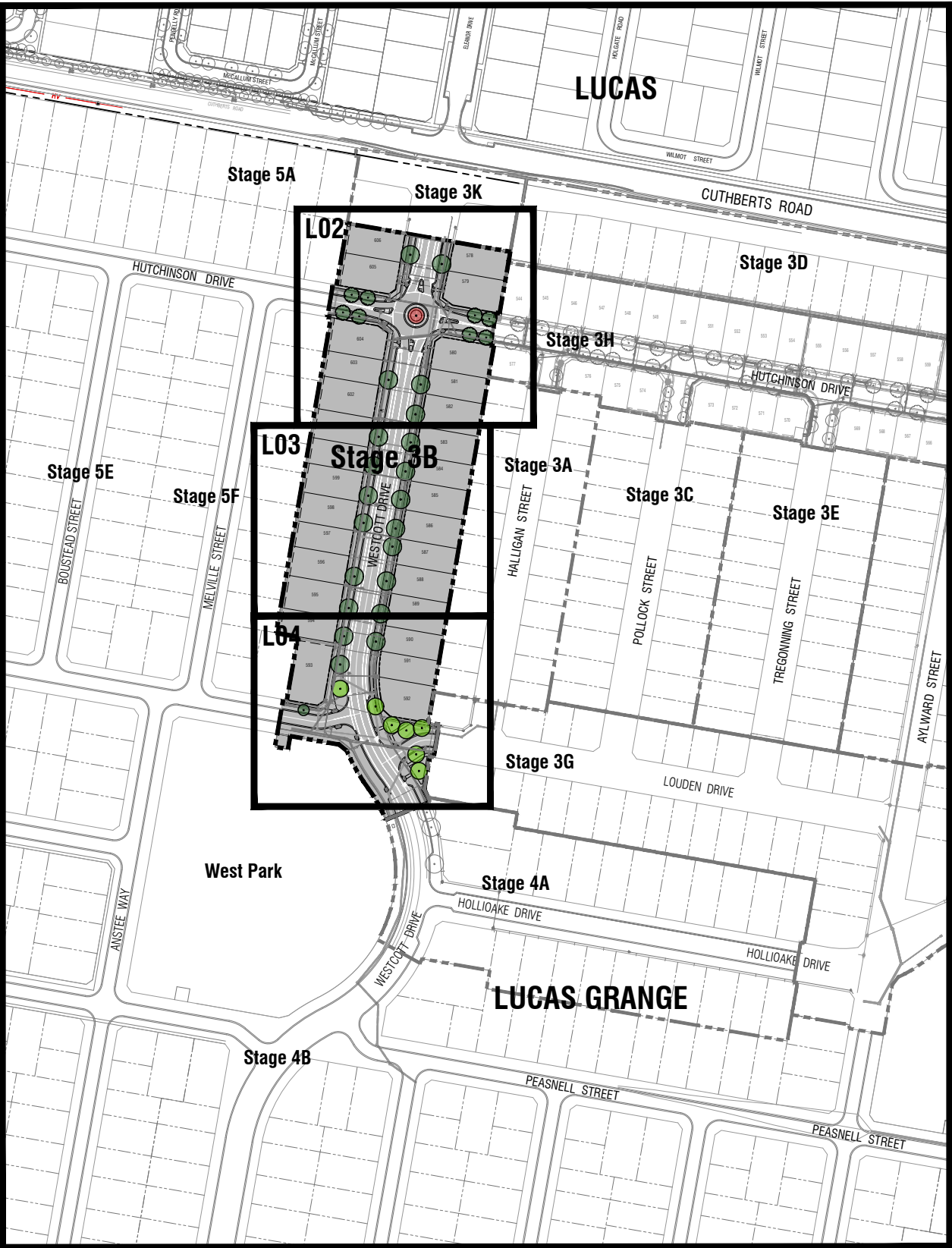
Notes

- All dimensions to be checked on site before commencing work. All measurements are in metres, unless otherwise shown.
- The locations of underground services and light poles are indicative only - refer to engineering drawings for design service offsets.
- The location and depth of services shall be verified on site prior to the commencement of works. The Contractor shall be liable for any damage to services during the landscape works.
- Standard Street Tree Offsets.
 - Standard offset from the back of kerb is 1.2m unless otherwise shown.
 - It is assumed that all Underground Cable in close proximity to the 'tree zone' (5m diameter x 600mm depth) shall be within conduits or have cover slabs to provide a higher level of infrastructure protection. (*Refer 12.0 'Distribution Construction Standard Underground Trenching GA211' by Citypower and Powercor).
 - Minimum setback of 2.5m to underground electricity cable joints / tees.
 - Minimum setback of 2.0m to service assets including pits and conduit crossings.
 - Minimum setback of 0.75m to domestic service tapping points and 2.0m to stormwater outlets.
 - Minimum setback of 1.2m to footpath crossings and 3.0m to driveways where they are existing or known.
 - Minimum setback of 3.0m to fire hydrants.
 - Minimum setback of 4.0m to light poles.
- Proposed Street Trees.
 - Tree position in front of lots may change slightly due to 'actual' location of services, and constructed driveway crossings.
 - Setback from intersection (kerb) shall be a minimum of 10m in accordance with City of Ballarat Landscape Design Manual (LDM).
 - Following City of Ballarat approval of these landscape plans any variation to the number or species of street trees requires approval by City of Ballarat.
- Planting. All trees, shrubs and groundcovers shall be planted in accordance with LDM, unless otherwise specified.
- Mulch. Mulch shall be recycled hardwood (or similar approved) in general accordance with LDM, unless otherwise specified.
- Grass Seeding. Reseed nature strips and other grassed areas where there has been disturbance due to landscape works with a proprietary grass seed mix in accordance with the LDM.

CITY OF
BALLARAT

BALLARAT PLANNING SCHEME
Document Endorsed under
Condition 4 of Permit No. PLP/2020/177/C
dated: 30/7/2024
Endorsed by Vicky Lu for and on
behalf of the City of Ballarat Council.
Date: 9/8/2024

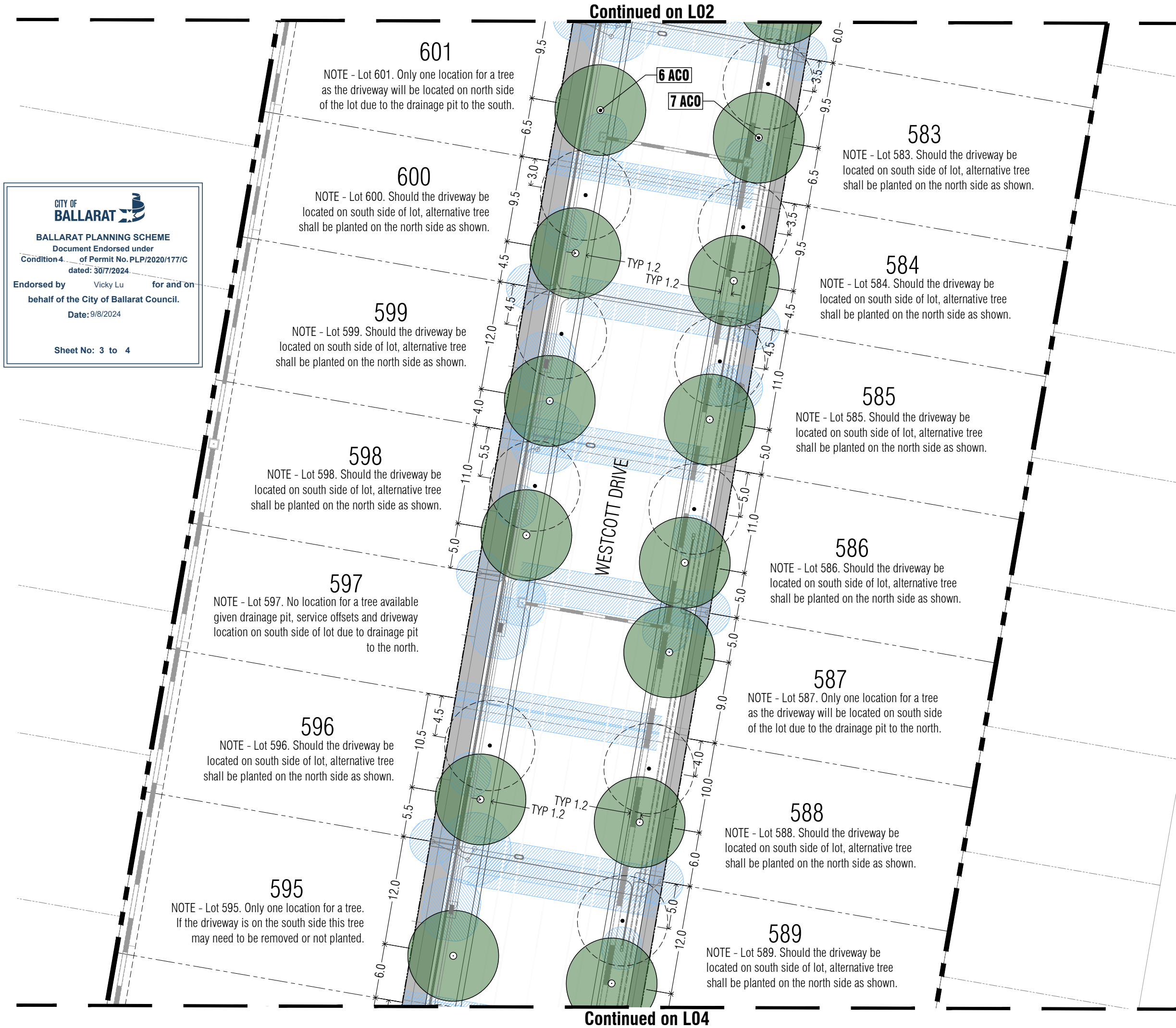
Sheet No: 1 to 4



CONTEXT AND SHEET LAYOUT - Stage 3B Lucas Grange

TYPICAL TREE PLANTING DETAIL

NOT TO SCALE.



CITY OF BALLARAT

BALLARAT PLANNING SCHEME
Document Endorsed under
Condition 4 of Permit No. PLP/2020/177/C
dated: 30/7/2024

Endorsed by Vicky Lu for and on
behalf of the City of Ballarat Council.
Date: 9/8/2024

Sheet No: 3 to 4

TP1	Town Planning Approval	AD	11.07.24
P5	Revisions re: powercor comments	AD	07.06.24
P4	Revisions re: Hutchinson Dve roundabout	AD	07.12.23
P3	Revisions re: NBN and Power plans	AD	09.10.23
P2	Revisions re: civil review	AD	08.09.23
P1	Preliminary Issue for Client Review	AD	06.09.23
Revision	Description	Initials	Date

APPROVAL ISSUE

Planning Permit PLP/2020/177/B

Notes

- All dimensions to be checked on site before commencing work. All measurements are in metres, unless otherwise shown.
- The locations of underground services and light poles are indicative only - refer to engineering drawings for design service offsets.
- The location and depth of services shall be verified on site prior to the commencement of works. The Contractor shall be liable for any damage to services during the landscape works.
- Standard Street Tree Offsets.
 - Standard offset from the back of kerb is 1.2m unless otherwise shown.
 - It is assumed that all Underground Cable in close proximity to the 'tree zone' (5m diameter x 600mm depth) shall be within conduits or have cover slabs to provide a higher level of infrastructure protection. (*Refer 12.0 'Distribution Construction Standard Underground Trenching GA211' by Citypower and Powercor).
 - Minimum setback of 2.5m to underground electricity cable joints / tees.
 - Minimum setback of 2.0m to service assets including pits and conduit crossings.
 - Minimum setback of 0.75m to domestic service tapping points and 2.0m to stormwater outlets.
 - Minimum setback of 1.2m to footpath crossings and 3.0m to driveways where they are existing or known.
 - Minimum setback of 3.0m to fire hydrants.
 - Minimum setback of 4.0m to light poles.
- Proposed Street Trees.
 - Tree position in front of lots may change slightly due to 'actual' location of services, and constructed driveway crossings.
 - Setback from intersection (kerb) shall be a minimum of 10m in accordance with City of Ballarat Landscape Design Manual (LDM).
 - Following City of Ballarat approval of these landscape plans any variation to the number or species of street trees requires approval by City of Ballarat.
- Planting. All trees, shrubs and groundcovers shall be planted in accordance with LDM, unless otherwise specified.
- Mulch. Mulch shall be recycled hardwood (or similar approved) in general accordance with LDM, unless otherwise specified.
- Grass Seeding. Reseed nature strips and other grassed areas where there has been disturbance due to landscape works with a proprietary grass seed mix in accordance with the LDM.
- Refer to drawing L01 for Plant Schedule.

Legend

- Proposed Street Trees - *Angophora costata* [ACO]
- Alternative tree location if driveway is located where street tree is proposed.
- Plant Label and Code
- Service Offsets

PLOT LANDSCAPE ARCHITECTS

WWW.PLOT.LA/CONTACT
03 9407 2246

Client / Project

Integra
Stage 3B
Lucas Grange, Ballarat

Drawing Title

Street Tree Plan 02

Drawn	Approved	Date	North
AD	RH	11/07/2024	
Scale (A1)	Scale (A3)	Sheet	
1:200	1:400	3 of 4	

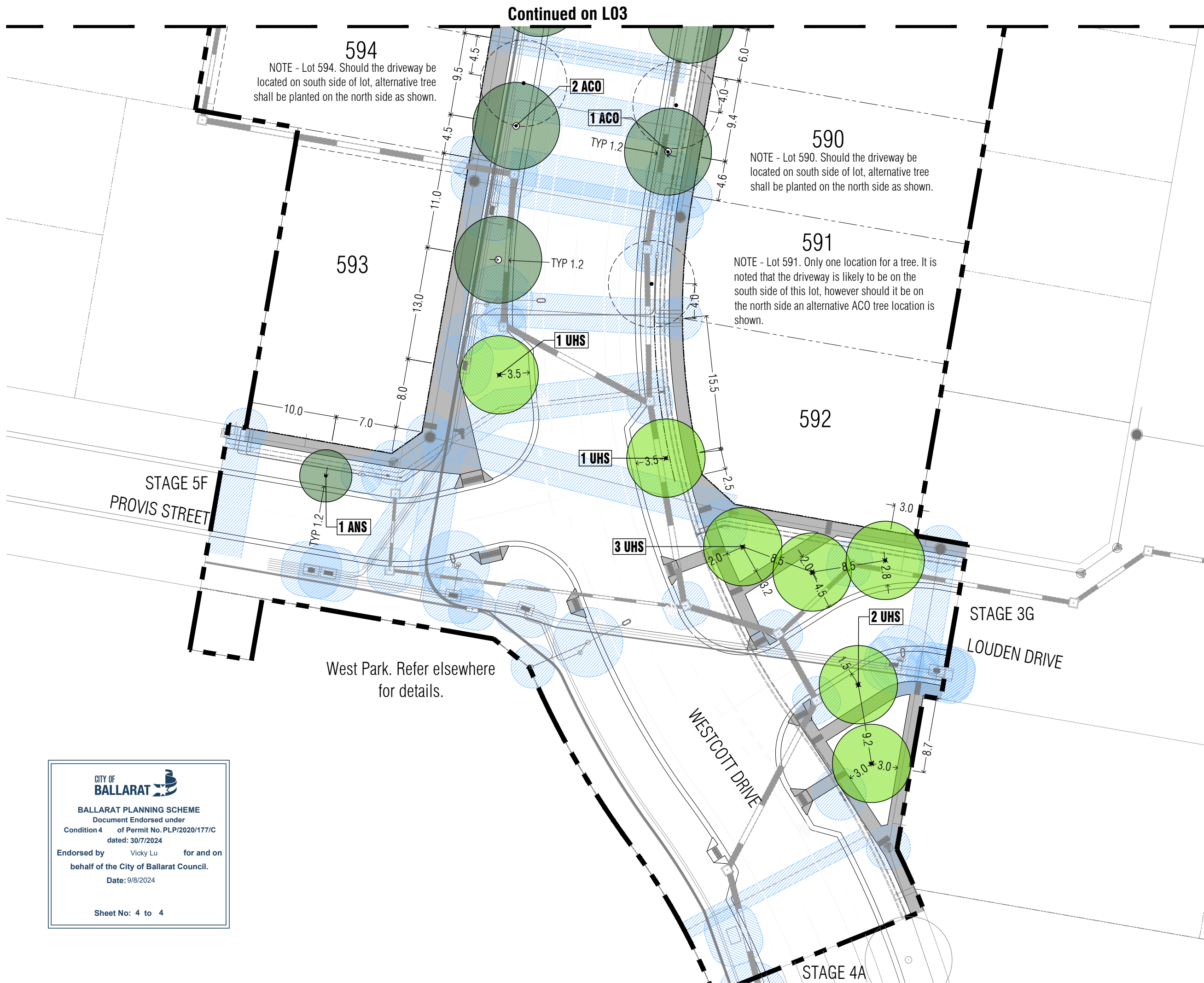
This drawing and design is protected by copyright © PLOT Landscape Architects Pty Ltd.

Drawing Number

Revision

PLA572-L03

TP1



TP1	Town Planning Approval	AD	11.07.24
P5	Revisions re: powercor comments	AD	07.06.24
P4	Revisions re: Hutchinson Dve roundabout	AD	07.12.23
P3	Revisions re: NBN and Power plans	AD	09.10.23
P2	Revisions re: civil review	AD	08.09.23
P1	Preliminary Issue for Client Review	AD	06.09.23
Revision	Description	Initials	Date

APPROVAL ISSUE

Planning Permit PLP/2020/177/B

Notes

- All dimensions to be checked on site before commencing work. All measurements are in metres, unless otherwise shown.
- The locations of underground services and light poles are indicative only - refer to engineering drawings for design service offsets.
- The location and depth of services shall be verified on site prior to the commencement of works. The Contractor shall be liable for any damage to services during the landscape works.
- Standard Street Tree Offsets.
 - Standard offset from the back of kerb is 1.2m unless otherwise shown.
 - It is assumed that all Underground Cable in close proximity to the 'tree zone' * (5m diameter x 600mm depth) shall be within conduits or have cover slabs to provide a higher level of infrastructure protection. (*Refer 12.0 'Distribution Construction Standard Underground Trenching GA211' by Citypower and Powercor).
- Minimum setback of 2.5m to underground electricity cable joints / tees.
- Minimum setback of 2.0m to service assets including pits and conduit crossings.
- Minimum setback of 0.75m to domestic service tapping points and 2.0m to stormwater outlets.
- Minimum setback of 1.2m to footpath crossings and 3.0m to driveways where they are existing or known.
- Minimum setback of 3.0m to fire hydrants.
- Minimum setback of 4.0m to light poles.

5. Proposed Street Trees.

- Tree position in front of lots may change slightly due to 'actual' location of services, and constructed driveway crossings.
- Setback from intersection (kerb) shall be a minimum of 10m in accordance with City of Ballarat Landscape Design Manual (LDM).
- Following City of Ballarat approval of these landscape plans any variation to the number or species of street trees requires approval by City of Ballarat.

6. Planting. All trees, shrubs and groundcovers shall be planted in accordance with LDM, unless otherwise specified.

7. Mulch. Mulch shall be recycled hardwood (or similar approved) in general accordance with LDM, unless otherwise specified.

8. Grass Seeding. Reseed nature strips and other grassed areas where there has been disturbance due to landscape works with a proprietary grass seed mix in accordance with the LDM.

9. Refer to drawing L01 for Plant Schedule.

Legend

- Proposed Street Trees - *Angophora costata* [ACO]
- Proposed Street Trees - *Acer negundo* 'Sensation' [ANS]
- Proposed Street Trees - *Ulmus* hybrid 'Sapporo Autumn Gold' [UHS]
- Alternative tree location if driveway is located where street tree is proposed.
- Plant Label and Code
- Service Offsets

PLOT LANDSCAPE ARCHITECTS

WWW.PLOT.LA/CONTACT
ADVISED BY 22/46571 PLAN/007/2024

Client / Project

Integra

Stage 3B
Lucas Grange, Ballarat

Drawing Title

Street Tree Plan 03

Drawn	Approved	Date	North
AD	RH	11/07/2024	
Scale (A1)	Scale (A3)	Sheet	
1:200	1:400	4 of 4	

This drawing and design is protected by copyright © PLOT Landscape Architects Pty Ltd.

Drawing Number

PLA572-L04

Revision

TP1