

Works	<b>INDICATIVE CANOPY COVERAGE ASSESSMENT</b>
-------	--

Project **Stage F6, Viewpoint**  
Date **Thursday, 31 August 2023**  
PLOT Drawing **PLA571-L01-L07 revision TP1**

Road **Buchanan Drive**

Code	Tree Species	Quantity	Radius (m)	Canopy Area (m2)	TOTAL CANOPY
FPC	<i>Fraxinus pennsylvanica</i> 'Cimmzam'	10	3.5	38	385
Total					385
Road Reserve Area					1177
Canopy Coverage for Buchanan Drive					33%

Road **Burt Way**

Code	Tree Species	Quantity	Radius (m)	Canopy Area (m2)	TOTAL CANOPY
APE	<i>Acacia pendula</i>	19	3	28	537
Total					537
Road Reserve Area					1828
Canopy Coverage for Burt Way					29%

Road **Charters Way**

Code	Tree Species	Quantity	Radius (m)	Canopy Area (m2)	TOTAL CANOPY
EMM	<i>Eucalyptus mannifera</i> subsp. <i>maculosa</i>	2	5	79	157
Total					157
Road Reserve Area*					634
Canopy Coverage for Charters Way					25%

\* Charters Way road reserve area includes the north side of the road (from the centre line) only.

Stage Total					30%
-------------	--	--	--	--	-----

**GREATER BENDIGO CITY COUNCIL**

**LANDSCAPE PLANS APPROVED**

**PLAN REFERRED TO IN PLANNING PERMIT  
NO: DS/903/2020**

**Delegated Officer: Jane Marriott**

**Date: 14 September 2023**

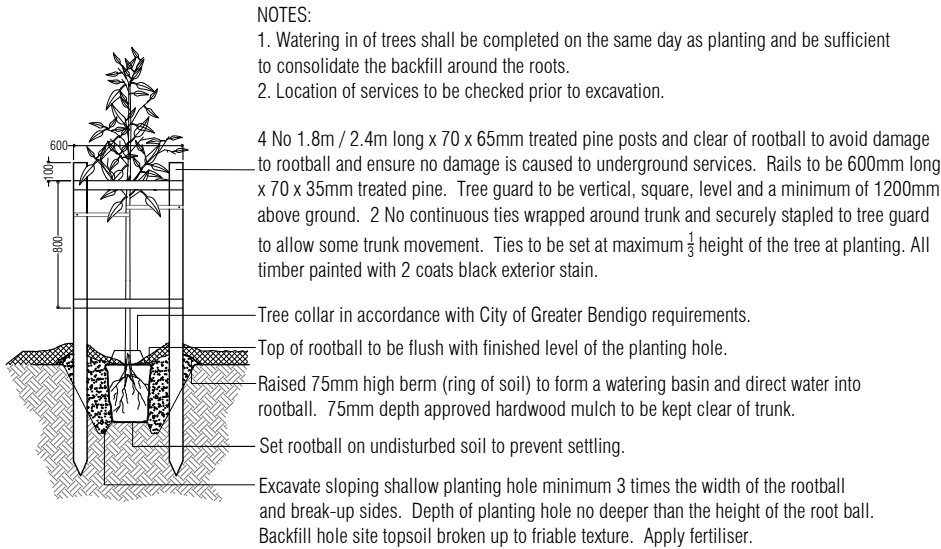


Contents.

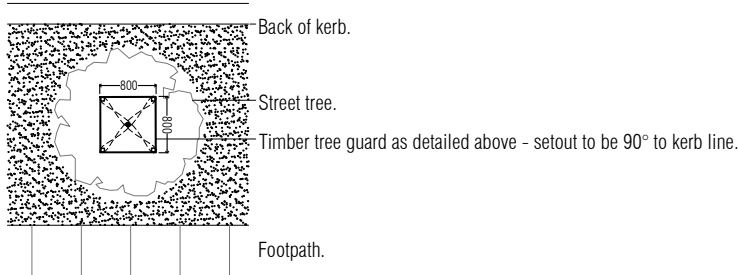
Drawing

- PLA571-L01 Contents, Context Plan and Plant Schedule  
PLA571-L02 Street Landscape Plan 1  
PLA571-L03 Street Landscape Plan 2  
PLA571-L04 Reserve Landscape Plan (West)  
PLA571-L05 Reserve Landscape Plan (Central)  
PLA571-L06 Reserve Landscape Plan (East) and Plant Schedule  
PLA571-L07 Landscape Details

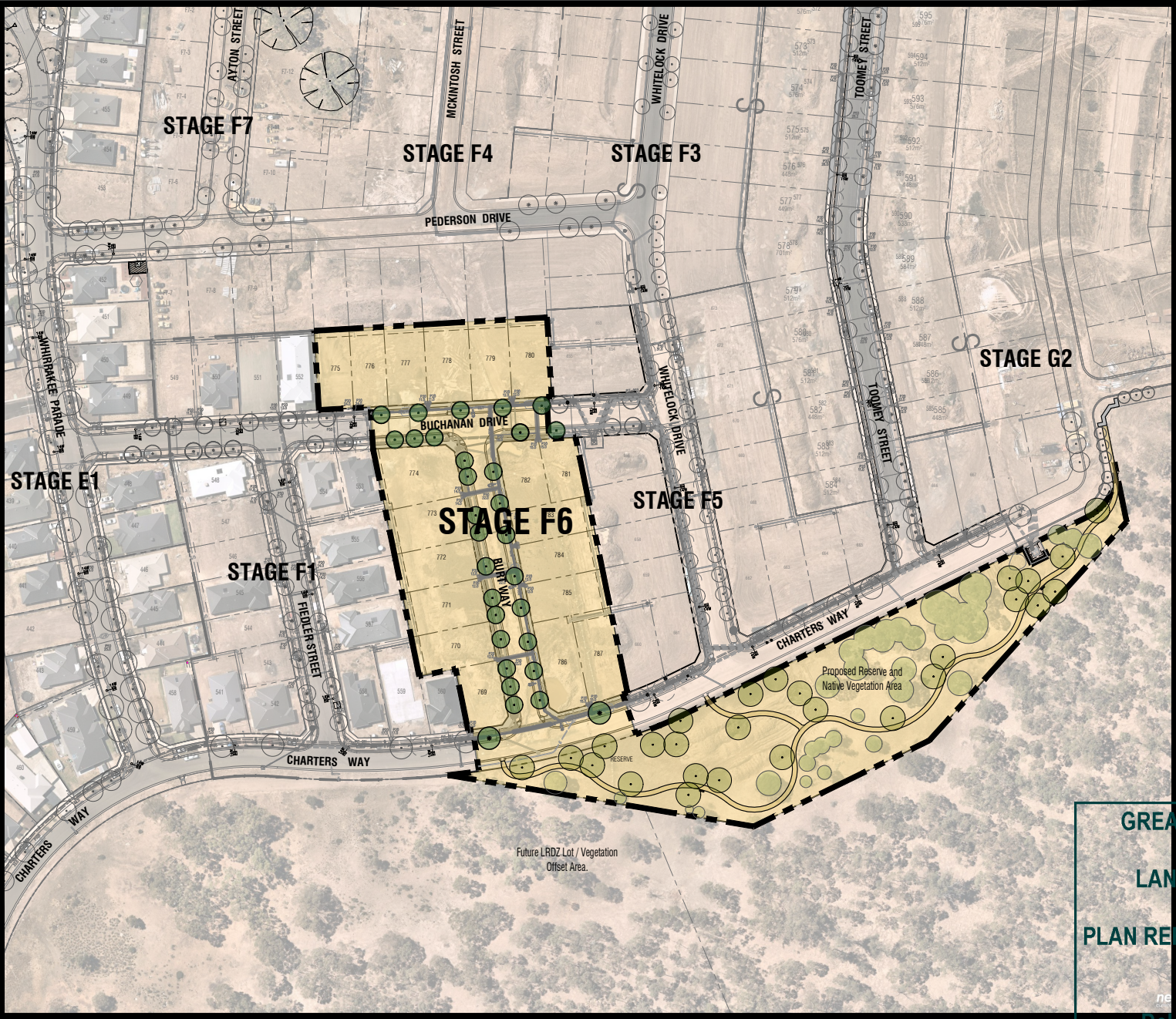
Typical Advanced Tree Planting Detail



Tree Planting Detail (nts).



Tree Guard Setout (nts).



Stage F6, Viewpoint - Context Plan (nts).

Street Tree Plant Schedule.

Street Trees

Code	Botanical Name	Common Name	Planting Size	Quantity
APE	<i>Acacia pendula</i>	Weeping Myall	45 ltr container, min. 2.2m high	19
EMM	<i>Eucalyptus mannifera</i> subsp. <i>maculosa</i>	Red Spotted Gum	45 ltr container, min. 2.2m high	2
FPC	<i>Fraxinus pennsylvanica</i> 'Cimmzam'	Cimmaron Ash	45 ltr container, min. 2.2m high	10

P3	NBN plans and CoGB preliminary review	AD	21.06.23
P2	Preliminary Issue - Reserve Plans	AD	12.06.23
P1	Preliminary Issue for Client Review	AD	08.06.23
Revision	Description	Initials	Date
PRELIMINARY ISSUE			
Status			

Notes

PLANNING PERMIT NUMBER - DS/903/2020

1. All dimensions to be checked on site before commencing work. All measurements are in metres, unless otherwise shown.
2. The locations of underground services and light poles are indicative only - refer to electrical plans for electrical and service offsets.
3. The location and depth of services shall be verified on site prior to the commencement of works. The Contractor shall be liable for any damage to services during the landscape works.
4. Standard Street Tree Offsets.
  - It is assumed that all Underground Cable in close proximity to the 'tree zone' \* (5m diameter x 600mm depth) shall be within conduits or have cover slabs to provide a higher level of infrastructure protection. (\*Refer 12.0 'Distribution Construction Standard Underground Trenching GA211' by Citypower and Powercor).
  - 2.5m from underground electrical cable joints and tees.
  - Minimum setback of 2.0m to service assets including pits and conduit crossings.
  - Minimum setback of 1.0m to domestic service tapping points and 2.0m to stormwater outlets.
  - Minimum setback of 1.5m to footpath crossings and 3.0m to driveways where they are existing or known.
  - Minimum setback of 3.0m to fire hydrants.
  - Minimum setback of 4.0m to light poles.
5. Proposed Street Trees.
  - Where possible, trees are planted to allow a driveway within 7.0m from the Title Boundary.
  - Tree position in front of lots may change slightly due to 'actual' location of services, and constructed driveway crossings.
  - Setback from intersection (kerb) shall be a minimum of 10m (at residential intersections of 50km/h) in accordance Landscape Design Guidelines for Subdivisions (LDG).
  - Following City of Greater Bendigo approval of these landscape plans any variation to the number or species of street trees requires approval by CoGB representative.
6. Existing Trees and Vegetation. The Contractor shall confirm and protect any existing vegetation during landscape works in accordance with the Planning Permit, DEECA and Council requirements and any other agreements.
7. Planting. All trees, shrubs and groundcovers shall be planted in accordance with the LDG, unless otherwise specified.
8. Mulch. Mulch shall be recycled hardwood (or similar approved) in general accordance with the LDG unless otherwise specified.
9. Grass Seeding. Reseed nature strips and other grassed areas where there has been disturbance due to landscape works with a minimum of 10mm seed depth in accordance with the LDG, unless otherwise specified.

GREATER BENDIGO CITY COUNCIL

LANDSCAPE PLANS APPROVED

PLAN REFERRED TO IN PLANNING PERMIT  
NO: DS/903/2020

Delegated Officer: Jane Marriott

Date: 12 September 2023

PLOT  
LANDSCAPE ARCHITECTS

PRELIMINARY

Client / Project



Viewpoint - Stage F6  
Huntly, Bendigo

Drawing Title

Contents, Context Plan and Plant Schedule

Drawn	Approved	Date	North
AD	RH	21.06.2023	
Scale (A1)	Scale (A3)	Sheet	
NTS	NTS	1 of 7	

This drawing and design is protected by copyright © PLOT Landscape Architects Pty Ltd. www.plota.com.au

Drawing Number

PLA571-L01

P3



P3	NBN plans and CoGB preliminary review	AD	21.06.23
P2	Preliminary Issue - Reserve Plans	AD	12.06.23
P1	Preliminary Issue for Client Review	AD	08.06.23
Revision	Description	Initials	Date

**PRELIMINARY ISSUE**

#### Notes

PLANNING PERMIT NUMBER - DS/903/2020

- All dimensions to be checked on site before commencing work. All measurements are in metres, unless otherwise shown.
- The locations of underground services and light poles are indicative only - refer to electrical plans for electrical and service offsets.
- The location and depth of services shall be verified on site prior to the commencement of works. The Contractor shall be liable for any damage to services during the landscape works.
- Standard Street Tree Offsets.
  - It is assumed that all Underground Cable in close proximity to the 'tree zone' (5m diameter x 600mm depth) shall be within conduits or have cover slabs to provide a higher level of infrastructure protection. (\*Refer 12.0 'Distribution Construction Standard Underground Trenching GA211' by Citypower and Powercor).
  - 2.5m from underground electrical cable joints and tees.
  - Minimum setback of 2.0m to service assets including pits and conduit crossings.
  - Minimum setback of 1.0m to domestic service tapping points and 2.0m to stormwater outlets.
  - Minimum setback of 1.5m to footpath crossings and 3.0m to driveways where they are existing or known.
  - Minimum setback of 3.0m to fire hydrants.
  - Minimum setback of 4.0m to light poles.
- Proposed Street Trees.
  - Where possible, trees are planted to allow a driveway within 7.0m from the Title Boundary.
  - Tree position in front of lots may change slightly due to 'actual' location of services, and constructed driveway crossings.
  - Setback from intersection (kerb) shall be a minimum of 10m (at residential intersections of 50km/h) in accordance Landscape Design Guidelines for Subdivisions (LDG).
  - Following City of Greater Bendigo approval of these landscape plans any variation to the number or species of street trees requires approval by CoGB representative.
- Existing Trees and Vegetation. The Contractor shall confirm and protect any existing vegetation during landscape works in accordance with the Planning Permit, DEECA and Council requirements and any other agreements.
- Planting. All trees, shrubs and groundcovers shall be planted in accordance with the LDG, unless otherwise specified.
- Mulch. Mulch shall be recycled hardwood (or similar approved) in general accordance with the LDG unless otherwise specified.
- Grass Seeding. Reseed nature strips and other grassed areas where there has been disturbance due to landscape works with a proprietary grass seed mix in accordance with the LDG, unless otherwise specified.
- Refer to L01 for Plant Schedule and Tree Planting Detail.

#### Legend

- Existing trees planted as part of another stage.
- Proposed Street Trees (*Acacia pendula*) [APE]
- Proposed Street Trees (*Fraxinus pennsylvanica* 'Cinnamom') [FPC]
- Alternative tree location if driveway is located where street tree is proposed.
- Service offsets / setbacks
- Plant Label and Code



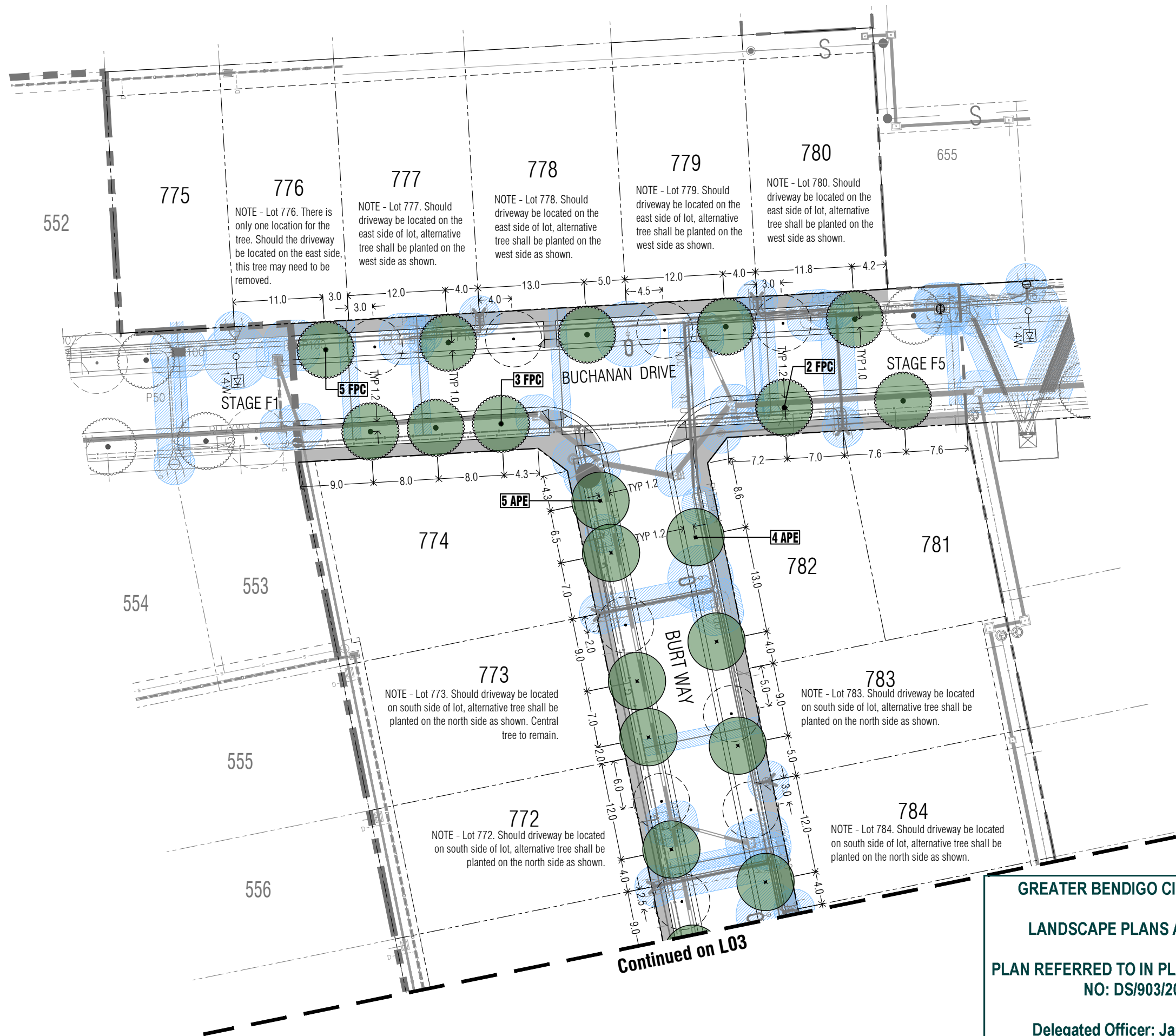
Client / Project  
**Integra**  
Viewpoint - Stage F6  
Huntly, Bendigo

Street Landscape Plan 1			
Drawn	Approved	Date	North
AD	RH	21.06.2023	
Scale (A1)	Scale (A3)	Sheet	
1:250	1:500	2 of 7	

This drawing and design is protected by copyright © PLOT Landscape Architects Pty Ltd. www.plotla.com.au

Drawing Number  
**PLA571-L02**

Revision  
**P3**



**GREATER BENDIGO CITY COUNCIL**

**LANDSCAPE PLANS APPROVED**

**PLAN REFERRED TO IN PLANNING PERMIT  
NO: DS/903/2020**

**Delegated Officer: Jane Marriott**

**Date: 12 September 2023**

P3	NBN plans and CoGB preliminary review	AD	21.06.23
P2	Preliminary Issue - Reserve Plans	AD	12.06.23
P1	Preliminary Issue for Client Review	AD	08.06.23
Revision	Description	Initials	Date

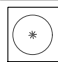
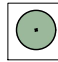
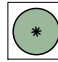

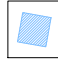

**PRELIMINARY ISSUE**

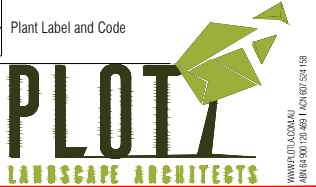
#### Notes

PLANNING PERMIT NUMBER - DS/903/2020

- All *dimensions* to be checked on site before commencing work. All *measurements* are in metres, unless otherwise shown.
- The locations of *underground services* and *light poles* are indicative only - refer to electrical plans for electrical and service offsets.
- The *location* and *depth* of *services* shall be verified on site prior to the commencement of works. The Contractor shall be liable for any damage to services during the landscape works.
- Standard Street Tree Offsets.
  - It is assumed that all Underground Cable in close proximity to the 'tree zone' \* (5m diameter x 600mm depth) shall be within conduits or have cover slabs to provide a higher level of infrastructure protection. (\*Refer 12.0 'Distribution Construction Standard Underground Trenching GA211' by Citypower and Powercor ).
  - 2.5m from underground electrical cable joints and tees.
  - Minimum setback of 2.0m to service assets including pits and conduit crossings.
  - Minimum setback of 1.0m to domestic service tapping points and 2.0m to stormwater outlets.
  - Minimum setback of 1.5m to footpath crossings and 3.0m to driveways where they are existing or known.
  - Minimum setback of 3.0m to fire hydrants.
  - Minimum setback of 4.0m to light poles.
- Proposed Street Trees.
  - Where possible, trees are planted to allow a driveway within 7.0m from the Title Boundary.
  - Tree position in front of lots may change slightly due to 'actual' location of services, and constructed driveway crossings.
  - Setback from intersection (kerb) shall be a minimum of 10m (at residential intersections of 50km/h) in accordance Landscape Design Guidelines for Subdivisions (LDG).
  - Following City of Greater Bendigo approval of these landscape plans any variation to the number or species of street trees requires approval by CoGB representative.
- Existing Trees and Vegetation. The Contractor shall confirm and protect any existing vegetation during landscape works in accordance with the Planning Permit, DEECA and Council requirements and any other agreements.
- Planting. All trees, shrubs and groundcovers shall be planted in accordance with the LDG, unless otherwise specified.
- Mulch. Mulch shall be recycled hardwood (or similar approved) in general accordance with the LDG unless otherwise specified.
- Grass Seeding. Reseed nature strips and other grassed areas where there has been disturbance due to landscape works with a proprietary grass seed mix in accordance with the LDG, unless otherwise specified.
- Refer to L01 for Plant Schedule and Tree Planting Detail.

#### Legend

-  Existing trees planted as part of another stage.
-  Proposed Street Trees (*Acacia pendula*) [APE]
-  Proposed Street Trees (*Eucalyptus mannifera* subsp. *maculosa*) [EMM]
-  Alternative tree location if driveway is located where street tree is proposed.
-  Service offsets / setbacks
-  Plant Label and Code



**PRELIMINARY**

Client / Project



Viewpoint - Stage F6  
Huntly, Bendigo

Drawing Title

**Street Landscape Plan 2**

Drawn	Approved	Date	North
AD	RH	21.06.2023	
Scale (A1)	Scale (A3)	Sheet	
1:250	1:500	3 of 7	

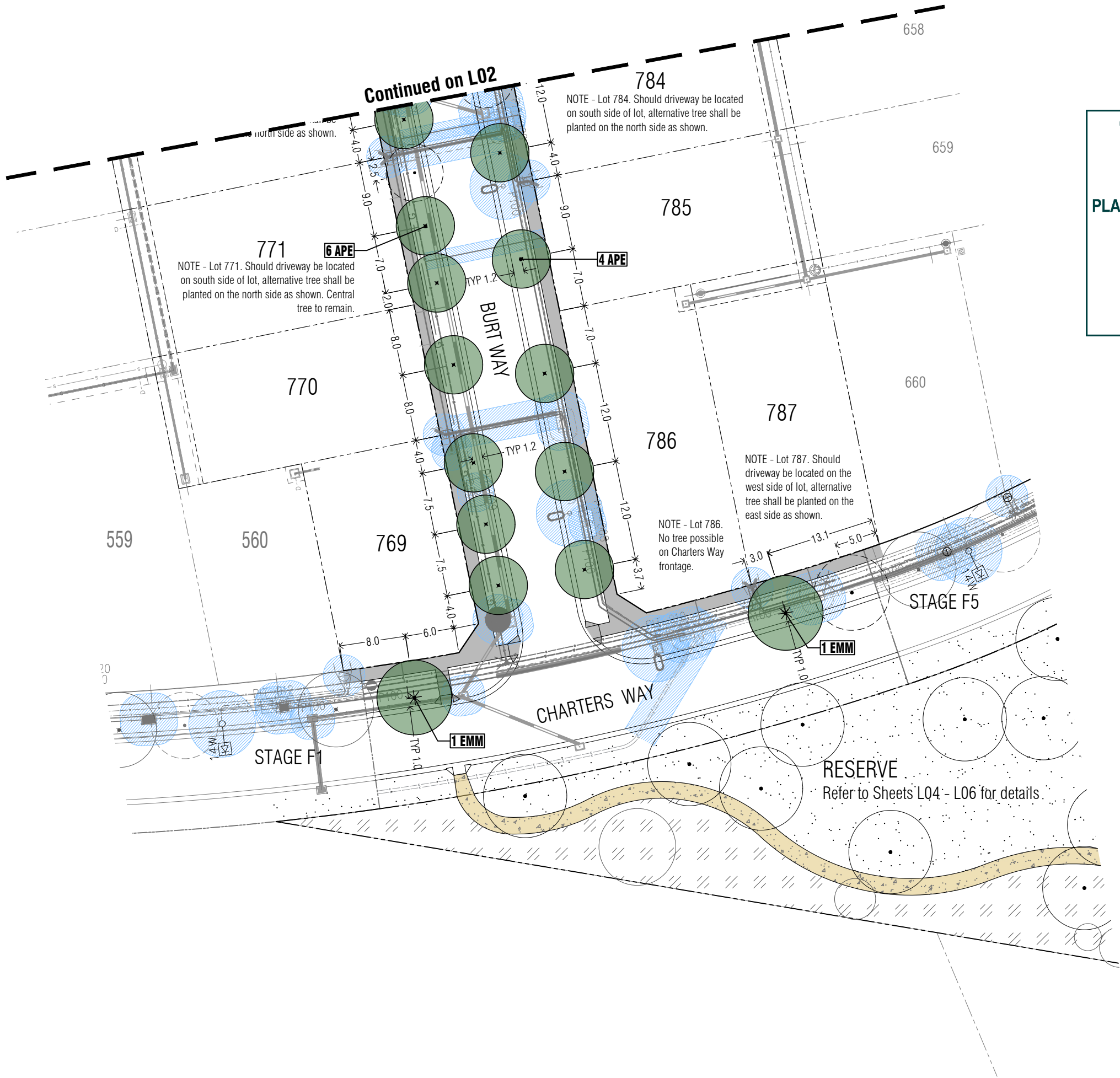
This drawing and design is protected by copyright © PLOT Landscape Architects Pty Ltd. www.plotla.com.au

Drawing Number

**PLA571-L03**

Revision

**P3**



**GREATER BENDIGO CITY COUNCIL**

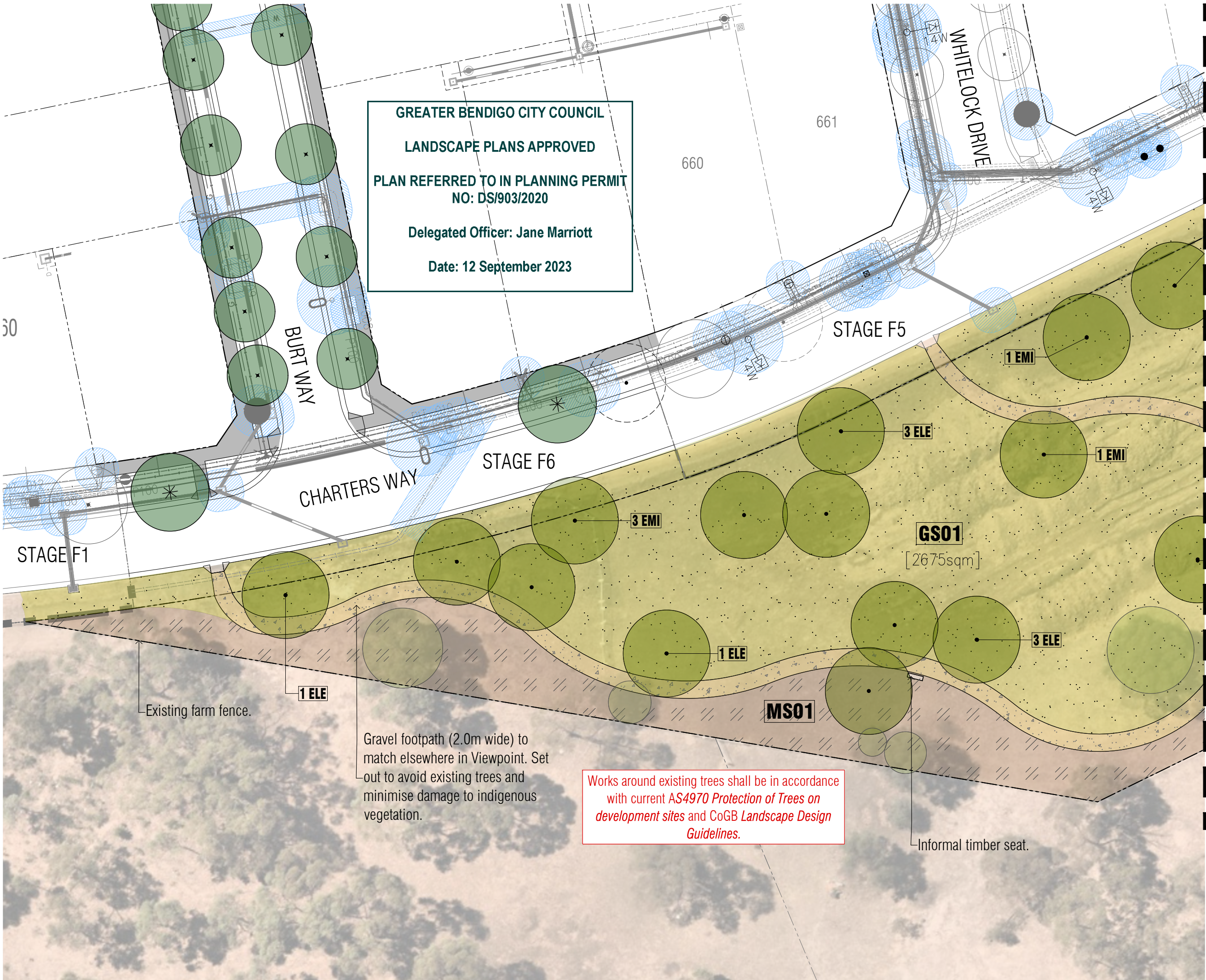
**LANDSCAPE PLANS APPROVED**

**PLAN REFERRED TO IN PLANNING PERMIT  
NO: DS/903/2020**

**Delegated Officer: Jane Marriott**

**Date: 12 September 2023**





P3	NBN plans and CoGB preliminary review	AD	21.06.23
P2	Preliminary Issue - Reserve Plans	AD	12.06.23
P1	Preliminary Issue for Client Review	AD	08.06.23
Revision	Description	Initials	Date

**PRELIMINARY ISSUE**

**Notes**

PLANNING PERMIT NUMBER - DS/903/2020

1. All dimensions to be checked on site before commencing work. All measurements are in metres, unless otherwise shown.
2. The locations of underground services and light poles are indicative only - refer to electrical plans for electrical and service offsets.
3. The location and depth of services shall be verified on site prior to the commencement of works. The Contractor shall be liable for any damage to services during the landscape works.
4. Standard Street Tree Offsets.
  - It is assumed that all Underground Cable in close proximity to the 'tree zone' \* (5m diameter x 600mm depth) shall be within conduits or have cover slabs to provide a higher level of infrastructure protection. (\*Refer 12.0 'Distribution Construction Standard Underground Trenching GA211' by Citypower and Powercor).
  - 2.5m from underground electrical cable joints and tees.
  - Minimum setback of 2.0m to service assets including pits and conduit crossings.
  - Minimum setback of 1.0m to domestic service tapping points and 2.0m to stormwater outlets.
  - Minimum setback of 1.5m to footpath crossings and 3.0m to driveways where they are existing or known.
  - Minimum setback of 3.0m to fire hydrants.
  - Minimum setback of 4.0m to light poles.
5. Existing Trees and Vegetation. The Contractor shall confirm and protect any existing vegetation during landscape works in accordance with the Planning Permit, DEECA and Council requirements and any other agreements.
6. Refer to L06 for Plant Schedule.

**Legend**

- Existing trees (from aerial photography) to be retained and protected.
- Proposed indigenous trees
- Proposed native grass (seeded) [GS01]
- Proposed bush mulch to encourage regeneration (not planted) [MS01]
- Proposed gravel path

PRELIMINARY

Client / Project

**Integra**

Viewpoint - Stage F6  
Huntly, Bendigo

Drawing Title

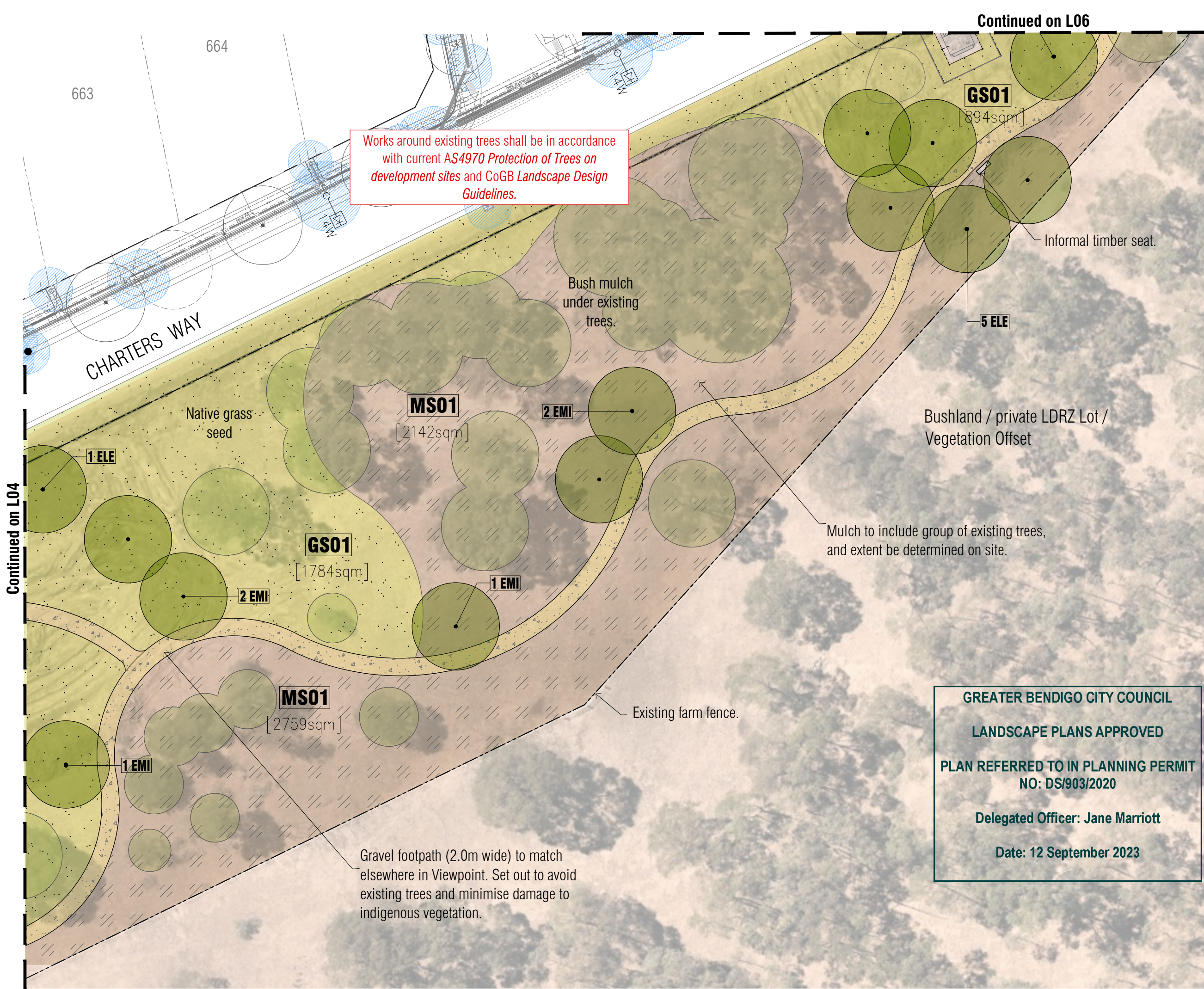
**Reserve Landscape Plan (West)**

Drawn	Approved	Date	North
AD	RH	21.06.2023	
Scale (A1)	Scale (A3)	Sheet	
1:200	1:400	4 of 7	

This drawing and design is protected by copyright © PLOT Landscape Architects Pty Ltd. www.plotla.com.au

Drawing Number	Revision
<b>PLA571-L04</b>	<b>P3</b>





P3NBN plans and CoGB preliminary reviewAD21.06.23

P2Preliminary Issue - Reserve PlansAD12.06.23

P1Preliminary Issue for Client ReviewAD08.06.23

RevisionDescriptionInitialsDate

PRELIMINARY ISSUE

Notes

PLANNING PERMIT NUMBER - DS/903/2020

1. All dimensions to be checked on site before commencing work. All measurements are in metres, unless otherwise shown.

2. The locations of underground services and light poles are indicative only - refer to electrical plans for electrical and service offsets.

3. The location and depth of services shall be verified on site prior to the commencement of works. The Contractor shall be liable for any damage to services during the landscape works.

4. Standard Street Tree Offsets.

- It is assumed that all Underground Cable in close proximity to the 'tree zone' \* (5m diameter x 600mm depth) shall be within conduits or have cover slabs to provide a higher level of infrastructure protection. (\*Refer 12.0 'Distribution Construction Standard Underground Trenching GA211' by Citypower and Powercor).
- 2.5m from underground electrical cable joints and tees.
- Minimum setback of 2.0m to service assets including pits and conduit crossings.
- Minimum setback of 1.0m to domestic service tapping points and 2.0m to stormwater outlets.
- Minimum setback of 1.5m to footpath crossings and 3.0m to driveways where they are existing or known.
- Minimum setback of 3.0m to fire hydrants.
- Minimum setback of 4.0m to light poles.

5. Existing Trees and Vegetation. The Contractor shall confirm and protect any existing vegetation during landscape works in accordance with the Planning Permit, DEECA and Council requirements and any other agreements.

6. Refer to L06 for Plant Schedule.

Legend

Existing trees (from aerial photography) to be retained and protected.

Proposed indigenous trees

Proposed native grass (seeded) [GS01]

Proposed bush mulch to encourage regeneration (not planted) [MS01]

Proposed gravel path

GREATER BENDIGO CITY COUNCIL

LANDSCAPE PLANS APPROVED

PLAN REFERRED TO IN PLANNING PERMIT NO: DS/903/2020

Delegated Officer: Jane Marriott

Date: 12 September 2023

PRELIMINARY

Client / Project

Viewpoint - Stage F6

Huntly, Bendigo

Drawing Title

Reserve Landscape Plan (Central)

DrawnAD

ApprovedRH

Date21.06.2023

North

Scale (A1)1:200

Scale (A3)1:400

Sheet5 of 7

This drawing and design is protected by copyright © PLOT Landscape Architects Pty Ltd. www.plota.com.au

Revision

PLA571-L05

P3





Continued on L05

P3NBN plans and CoGB preliminary reviewAD21.06.23

P2Preliminary Issue - Reserve PlansAD12.06.23

P1Preliminary Issue for Client ReviewAD08.06.23

RevisionDescriptionInitialsDate

StatusPRELIMINARY ISSUE

Notes

PLANNING PERMIT NUMBER - DS/903/2020

1. All dimensions to be checked on site before commencing work. All measurements are in metres, unless otherwise shown.

2. The locations of underground services and light poles are indicative only - refer to electrical plans for electrical and service offsets.

3. The location and depth of services shall be verified on site prior to the commencement of works. The Contractor shall be liable for any damage to services during the landscape works.

4. Standard Street Tree Offsets.

- It is assumed that all Underground Cable in close proximity to the 'tree zone' \* (5m diameter x 600mm depth) shall be within conduits or have cover slabs to provide a higher level of infrastructure protection. (\*Refer 12.0 'Distribution Construction Standard Underground Trenching GA211' by Citypower and Powercor ).
- 2.5m from underground electrical cable joints and tees.
- Minimum setback of 2.0m to service assets including pits and conduit crossings.
- Minimum setback of 1.0m to domestic service tapping points and 2.0m to stormwater outlets.
- Minimum setback of 1.5m to footpath crossings and 3.0m to driveways where they are existing or known.
- Minimum setback of 3.0m to fire hydrants.
- Minimum setback of 4.0m to light poles.

5. Existing Trees and Vegetation. The Contractor shall confirm and protect any existing vegetation during landscape works in accordance with the Planning Permit, DEECA and Council requirements and any other agreements.

Legend

Existing trees (from aerial photography) to be retained and protected.

Proposed indigenous trees

Proposed native grass (seeded) [GS01]

Proposed bush mulch to encourage regeneration (not planted) [MS01]

Proposed gravel path

Greater Bendigo City Council

LANDSCAPE PLANS APPROVED

PLAN REFERRED TO IN PLANNING PERMIT NO: DS/903/2020

Delegated Officer: Jane Marriott

Date: 12 September 2023

Reserve Trees

Code	Botanical Name	Common Name	Planting Size	Quantity
ELE	<i>Eucalyptus leucoxylon</i>	Yellow Gum	18-20 ltr container*, min 1.2m high + Rabbit Guard	14
EMI	<i>Eucalyptus microcarpa</i>	Grey Box	18-20 ltr container*, min 1.2m high + Rabbit Guard	13

\* All Reserve trees shall be from locally sourced provenance from Neangar Nursery or other local nursery approved by CoGB. Should this size not be available, a smaller size may be acceptable subject to CoGB confirmation.

Greater Bendigo City Council

LANDSCAPE PLANS APPROVED

PLAN REFERRED TO IN PLANNING PERMIT NO: DS/903/2020

Delegated Officer: Jane Marriott

Date: 12 September 2023

Plot Landscape Architects

PRELIMINARY

Client / Project

Integra

Viewpoint - Stage F6

Huntly, Bendigo

Drawing Title

Reserve Landscape Plan (East) and Plant Schedule

DrawnAD

ApprovedRH

Date21.06.2023

North

Scale (A1)1:200

Scale (A3)1:400

Sheet6 of 7

This drawing and design is protected by copyright © PLOT Landscape Architects Pty Ltd. www.plotla.com.au

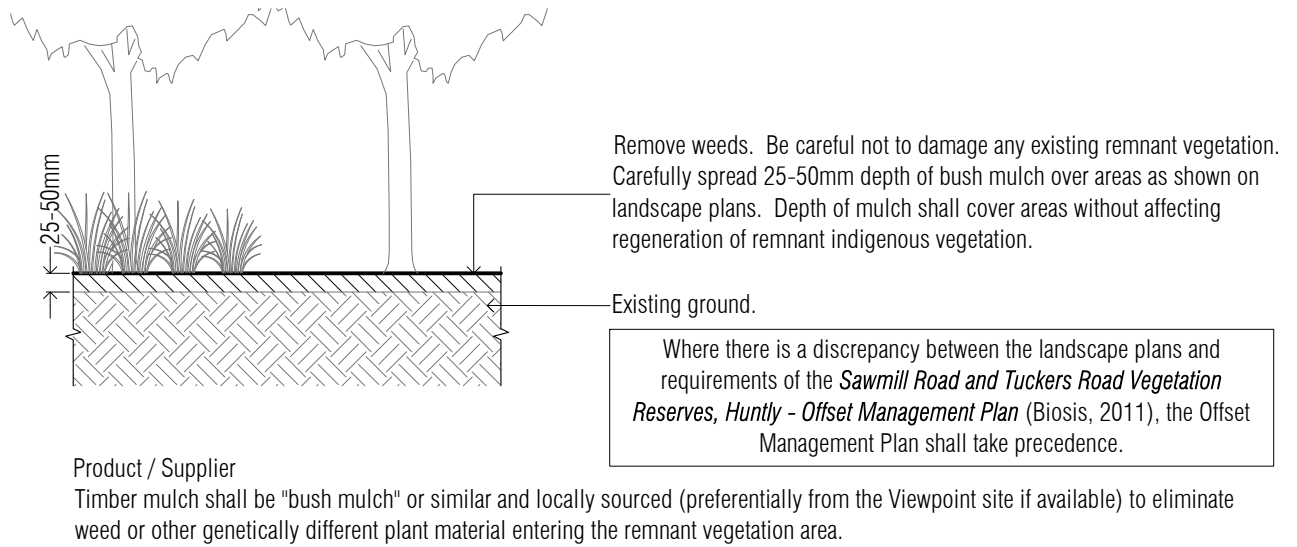
Drawing Number

Revision

PLA571-L06

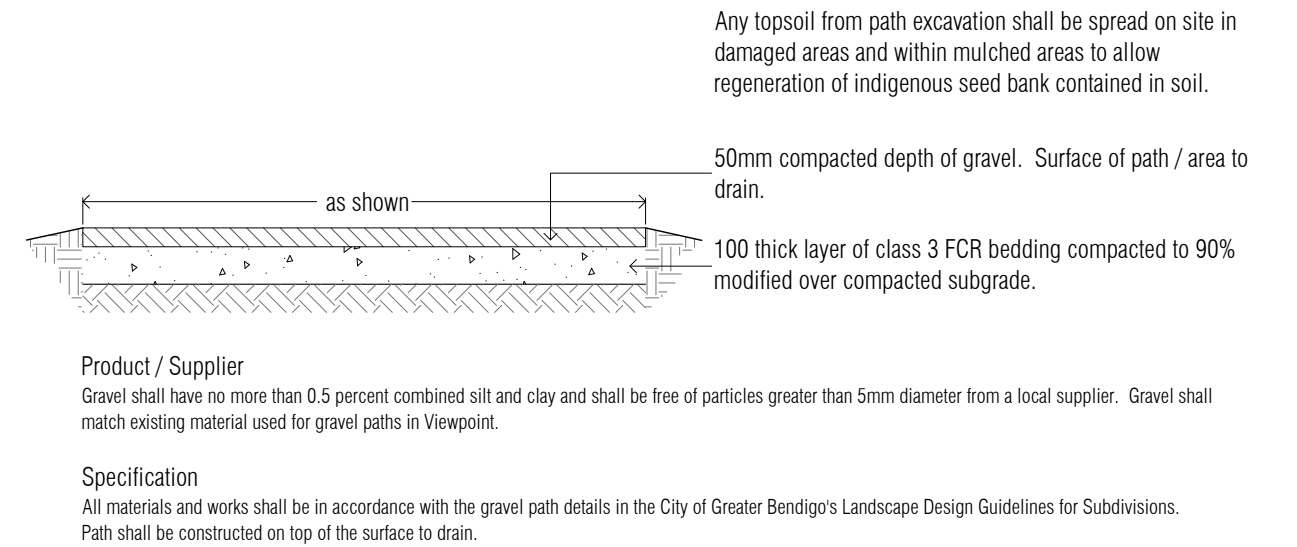
P3





## MS01 Mulch over Damaged / Denuded Areas

Typical Detail



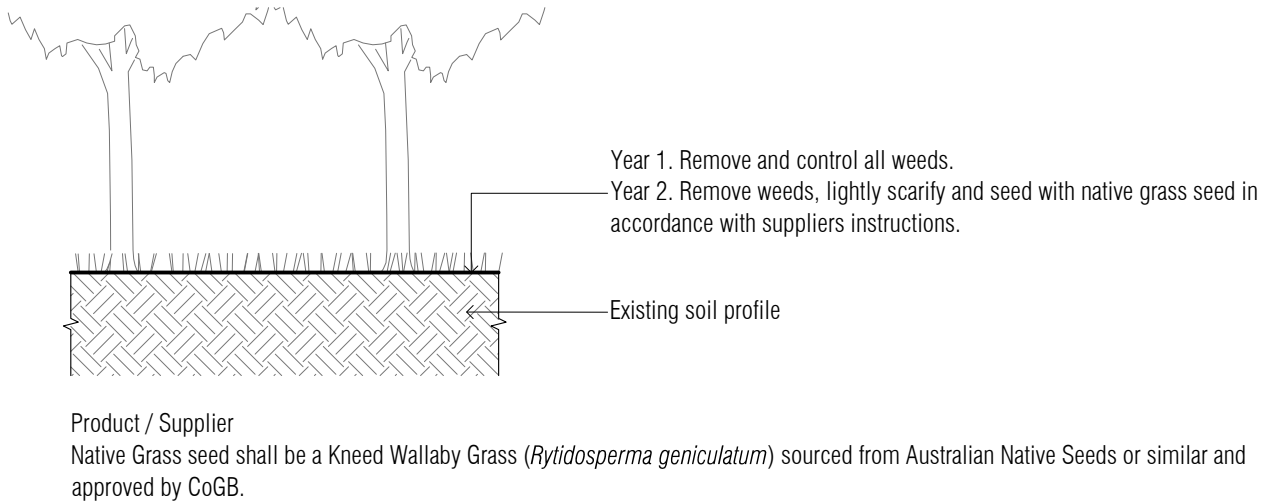
## Gravel Path / Surface

Typical Detail



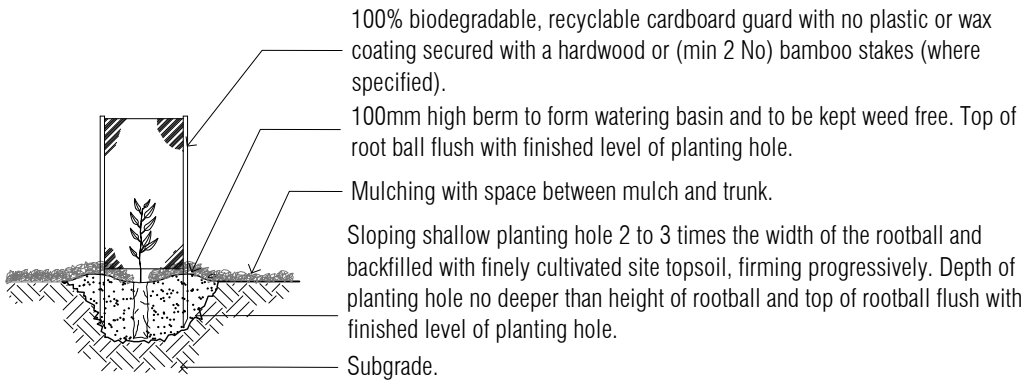
### Informal Timber Seat

Indicative Image. Style to be confirmed by CoGB.



## GS01 Typical Native Grass Seed Planting Detail

Typical Detail



NOTE: Watering in of plants shall be completed on the same day as planting and be sufficient to consolidate the backfill around the roots.

## Typical Tubestock + Guard Planting Detail

Typical Detail

**GREATER BENDIGO CITY COUNCIL**

**LANDSCAPE PLANS APPROVED**

**PLAN REFERRED TO IN PLANNING PERMIT NO: DS/903/2020**

**Delegated Officer: Jane Marriott**

**Date: 12 September 2023**

# landscape details

P3	NBN plans and CoGB preliminary review	AD	21.06.23			
P2	Preliminary Issue - Reserve Plans	AD	12.06.23			
P1	Preliminary Issue for Client Review	AD	08.06.23			
Revision	Description	Initials	Date			
Status	<b>PRELIMINARY ISSUE</b>					
<b>Notes</b>						
PLANNING PERMIT NUMBER - DS/903/2020						

**PLOT** LANDSCAPE ARCHITECTS

PRELIMINARY

Client / Project

**Integra**

Viewpoint - Stage F6  
Huntly, Bendigo

Drawing Title

**Landscape Details**

Drawn: AD, Approved: RH, Date: 21.06.2023

Scale (A1): -, Scale (A3): -, Sheet: 7 of 7

This drawing and design is protected by copyright © PLOT Landscape Architects Pty Ltd. www.plota.com.au

Drawing Number: **PLA571-L07**, Revision: **P3**